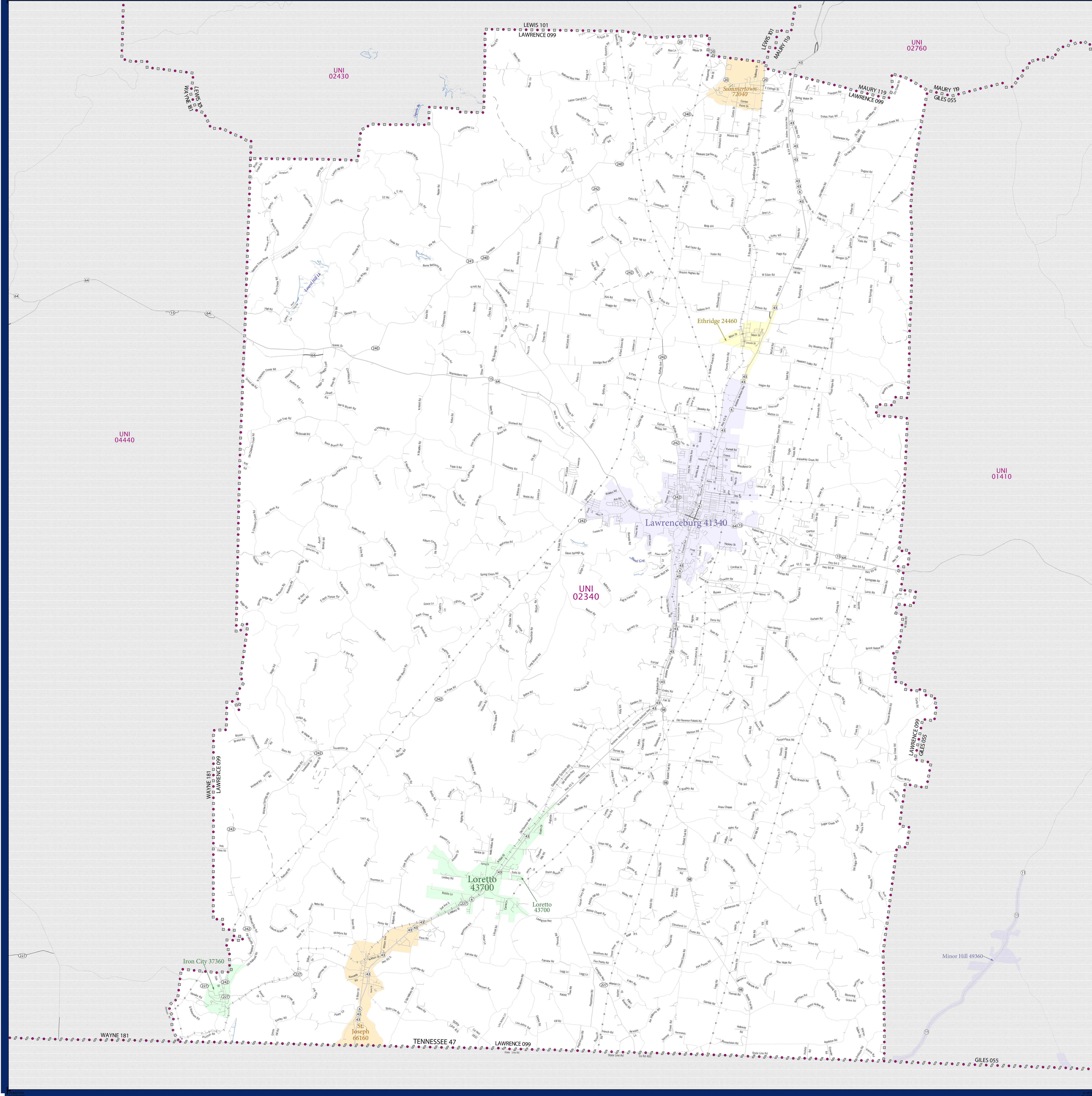


# SCHOOL DISTRICT REFERENCE MAP (2010 CENSUS): Lawrence County, TN



| SYMBOL DESCRIPTION                          |          | LEGEND                |          |
|---|----------|-----------------------|----------|
| Federal American Indian Reservation         | [Symbol] | L'ANSE RES 1880       | [Symbol] |
| Off-Reservation Trust Land                  | [Symbol] | T1880                 | [Symbol] |
| State American Indian Reservation           | [Symbol] | Tama Res 4125         | [Symbol] |
| Alaska Native Regional Corporation          | [Symbol] | NANA ANRC 52120       | [Symbol] |
| State (or statistically equivalent entity)  | [Symbol] | NEW YORK 36           | [Symbol] |
| County (or statistically equivalent entity) | [Symbol] | ERIE 029              | [Symbol] |
| Minor Civil Division (MCD) <sup>1,2</sup>   | [Symbol] | Bristol town 07485    | [Symbol] |
| Consolidated City                           | [Symbol] | MILFORD 47500         | [Symbol] |
| Incorporated Place <sup>3</sup>             | [Symbol] | Davis 18100           | [Symbol] |
| Census Designated Place (CDP) <sup>3</sup>  | [Symbol] | Incline Village 35100 | [Symbol] |
| Unified School District                     | [Symbol] | UNI 03370             | [Symbol] |
| Secondary School District                   | [Symbol] | SEC 99965             | [Symbol] |
| Elementary School District                  | [Symbol] | ELM 02220             | [Symbol] |

| DESCRIPTION   | SYMBOL   | DESCRIPTION  | SYMBOL   |
|---|----------|--|----------|
| Interstate  | [Symbol] | Water Body   | [Symbol] |
| U.S. Highway  | [Symbol] | Swamp or Marsh                                     | [Symbol] |
| State Highway   | [Symbol] | Glacier  | [Symbol] |
| Other Road  | [Symbol] | Military   | [Symbol] |
| Railroad  | [Symbol] | National or State Park, Forest, or Recreation Area | [Symbol] |
| Pipeline or Power Line                                  | [Symbol] | Inset Area   | [Symbol] |
| Ridge or Fence  | [Symbol] | Outside Subject Area                               | [Symbol] |
| Property Line   | [Symbol] |  |          |
| Nonvisible Boundary or Feature Not Elsewhere Classified | [Symbol] |  |          |

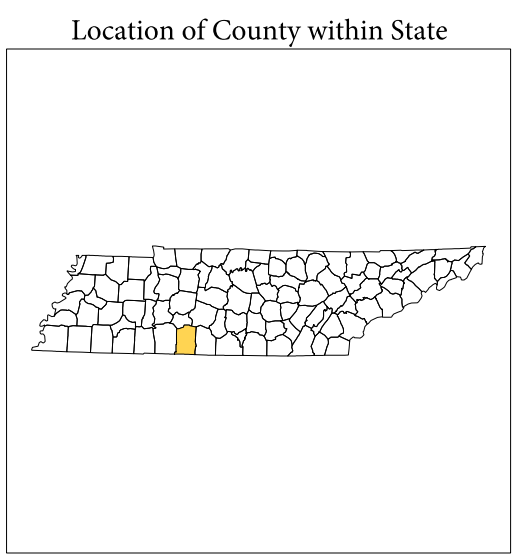
Where state, county, and/or MCD boundaries coincide, the map shows the boundary symbol for only the highest-ranking of these boundaries.

1 A "\*" following an MCD name denotes a false MCD. A "\*" following a place name indicates that a false MCD exists with the same name and FIPS code as the place; the false MCD label is not shown.

2 MCD boundaries are shown in the following states in which MCDs have functioning governments: Connecticut, Maine, Massachusetts, Michigan, Minnesota, New Hampshire, New Jersey, New York, Pennsylvania, Rhode Island, Vermont, and Wisconsin.

3 Place label color correlates to the place fill color.

| SCHOOL DISTRICTS WITHIN COUNTY |       |                                 |
|--------------------------------|-------|---------------------------------|
| TYPE                           | CODE  | NAME                            |
| UNI                            | 02340 | Lawrence County School District |



All legal boundaries and names are as of January 1, 2010. The boundaries shown on this map are for Census Bureau statistical data collection and tabulation purposes only; their depiction and designation for statistical purposes does not constitute a determination of jurisdictional authority or rights of ownership or entitlement.

Geographic Vintage: 2010 Census (reference date: January 1, 2010)  
 Data Source: U.S. Census Bureau's MAINTIGER database (TAB100147)  
 Map Created by Geography Division: December 12, 2010

U.S. DEPARTMENT OF COMMERCE Economics and Statistics Administration U.S. Census Bureau

