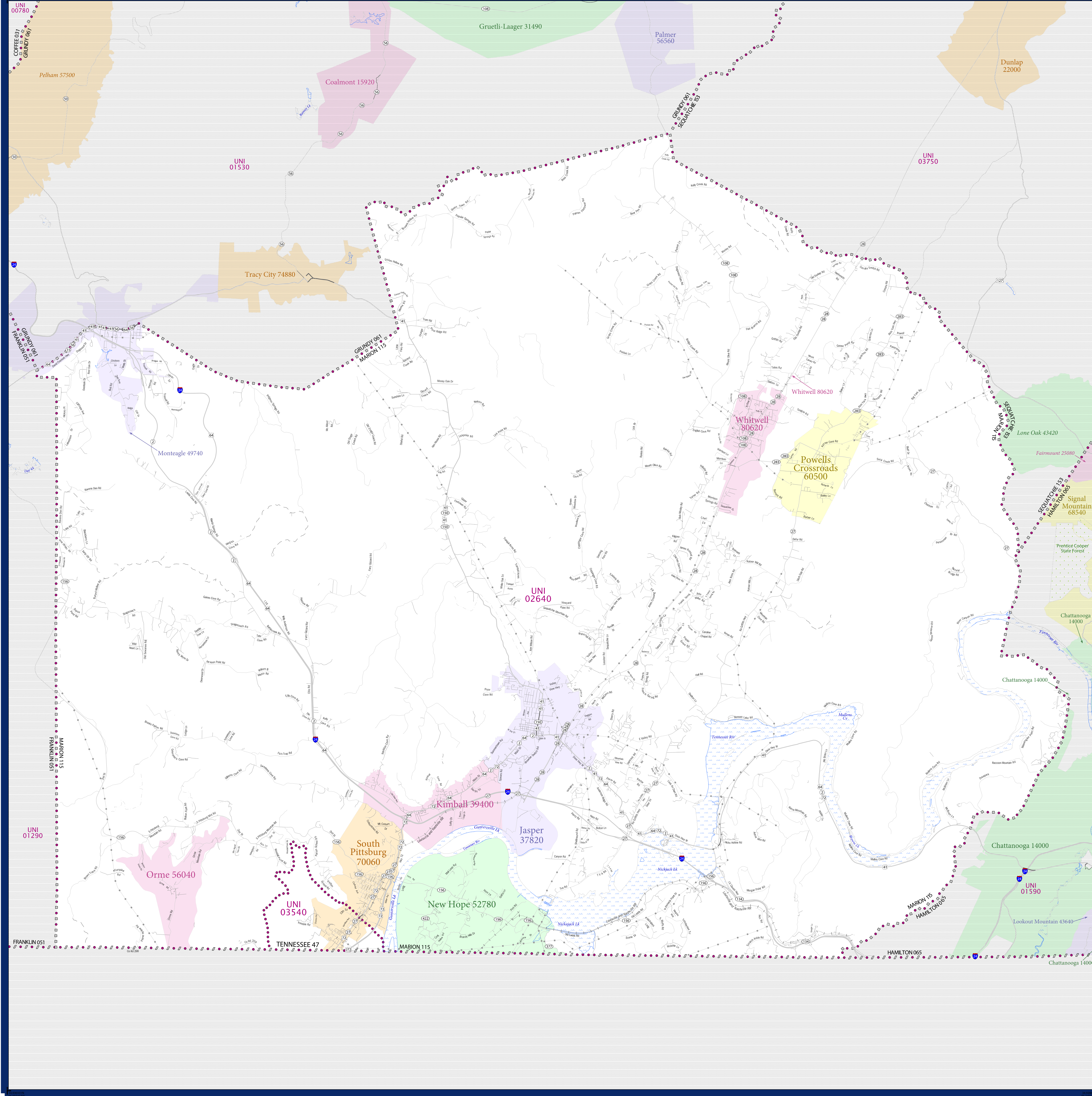


SCHOOL DISTRICT REFERENCE MAP (2010 CENSUS): Marion County, TN



LEGEND

SYMBOL DESCRIPTION	SYMBOL	LABEL STYLE
Federal American Indian Reservation	[Dotted pattern]	L'ANSE RES 1880
Off-Reservation Trust Land	[Dotted pattern]	T1880
State American Indian Reservation	[Dotted pattern]	Tama Res 4125
Alaska Native Regional Corporation	[Dotted pattern]	NANA ANRC 52120
State (or statistically equivalent entity)	[Dotted pattern]	NEW YORK 36
County (or statistically equivalent entity)	[Dotted pattern]	ERIE 029
Minor Civil Division (MCD) ^{1,2}	[Dotted pattern]	Bristol town 07485
Consolidated City	[Dotted pattern]	MILFORD 47500
Incorporated Place ³	[Dotted pattern]	Davis 18100
Census Designated Place (CDP) ³	[Dotted pattern]	Incline Village 35100
Unified School District	[Dotted pattern]	UNI 03370
Secondary School District	[Dotted pattern]	SEC 99965
Elementary School District	[Dotted pattern]	ELM 02220

DESCRIPTION	SYMBOL	DESCRIPTION	SYMBOL
Interstate	[Thick solid line]	Water Body	[Blue wavy line]
U.S. Highway	[Thin solid line]	Swamp or Marsh	[Blue wavy line]
State Highway	[Thin solid line]	Glacier	[Blue wavy line]
Other Road	[Thin solid line]	Military	[Blue wavy line]
4WD Trail, Stamen, Alley, Walkway, or Ferry	[Thin solid line]	National or State Park, Forest, or Recreation Area	[Blue wavy line]
Railroad	[Thin solid line]	Inset Area	[Blue wavy line]
Pipeline or Power Line	[Thin solid line]	Outside Subject Area	[Blue wavy line]
Ridge or Fence	[Thin solid line]		
Property Line	[Thin solid line]		
Nonvisible Boundary or Feature Not Elsewhere Classified	[Thin solid line]		

Where state, county, and/or MCD boundaries coincide, the map shows the boundary symbol for only the highest-ranking of these boundaries.

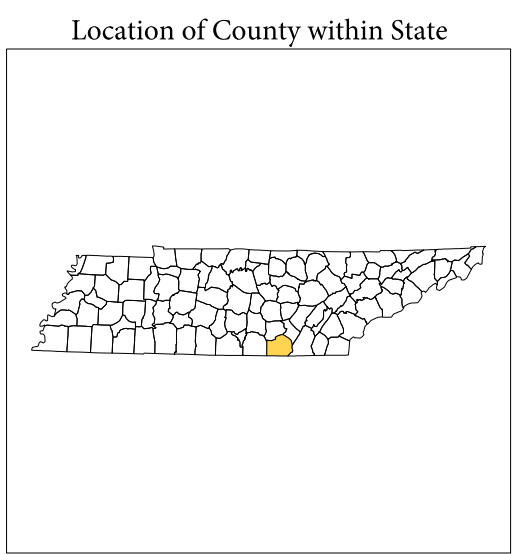
1 A "*" following an MCD name denotes a false MCD. A "*" following a place name indicates that a false MCD exists with the same name and FIPS code as the place; the false MCD label is not shown.

2 MCD boundaries are shown in the following states in which MCDs have functioning governments: Connecticut, Maine, Massachusetts, Michigan, Minnesota, New Hampshire, New Jersey, New York, Pennsylvania, Rhode Island, Vermont, and Wisconsin.

3 Place label color correlates to the place fill color.

SCHOOL DISTRICTS WITHIN COUNTY

TYPE	CODE	NAME
UNI	03540	Marion County School District
UNI		Richard City Special School District

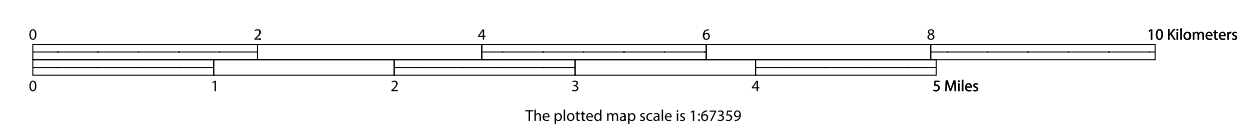


All legal boundaries and names are as of January 1, 2010. The boundaries shown on this map are for Census Bureau statistical data collection and tabulation purposes only; their depiction and designation for statistical purposes does not constitute a determination of jurisdictional authority or rights of ownership or entitlement.

Geographic Vintage: 2010 Census (reference date: January 1, 2010)
 Data Source: U.S. Census Bureau's MAINTIGR database (TAB100147)
 Map Created by Geography Division: December 12, 2010

U.S. DEPARTMENT OF COMMERCE Economics and Statistics Administration U.S. Census Bureau

Projection: Albers Equal Area Conic
 Datum: NAD83
 Spheroid: GRS 80
 1st Standard Parallel: 35 16 28
 2nd Standard Parallel: 36 23 50
 Central Meridian: 85 58 43
 Latitude of Projection's Origin: 34 59 38
 False Easting: 0
 False Northing: 0



USCENSUSBUREAU

PARENT SHEET 1
 Total Sheets: 1
 Index Sheets: 0
 Parent Sheets: 1
 Inset Sheets: 0

NAME: Marion County (115)
 ENTITY TYPE: County or statistically equivalent entity
 ST: Tennessee (47)

2010 SD MAP (PARENT)
 201047115001