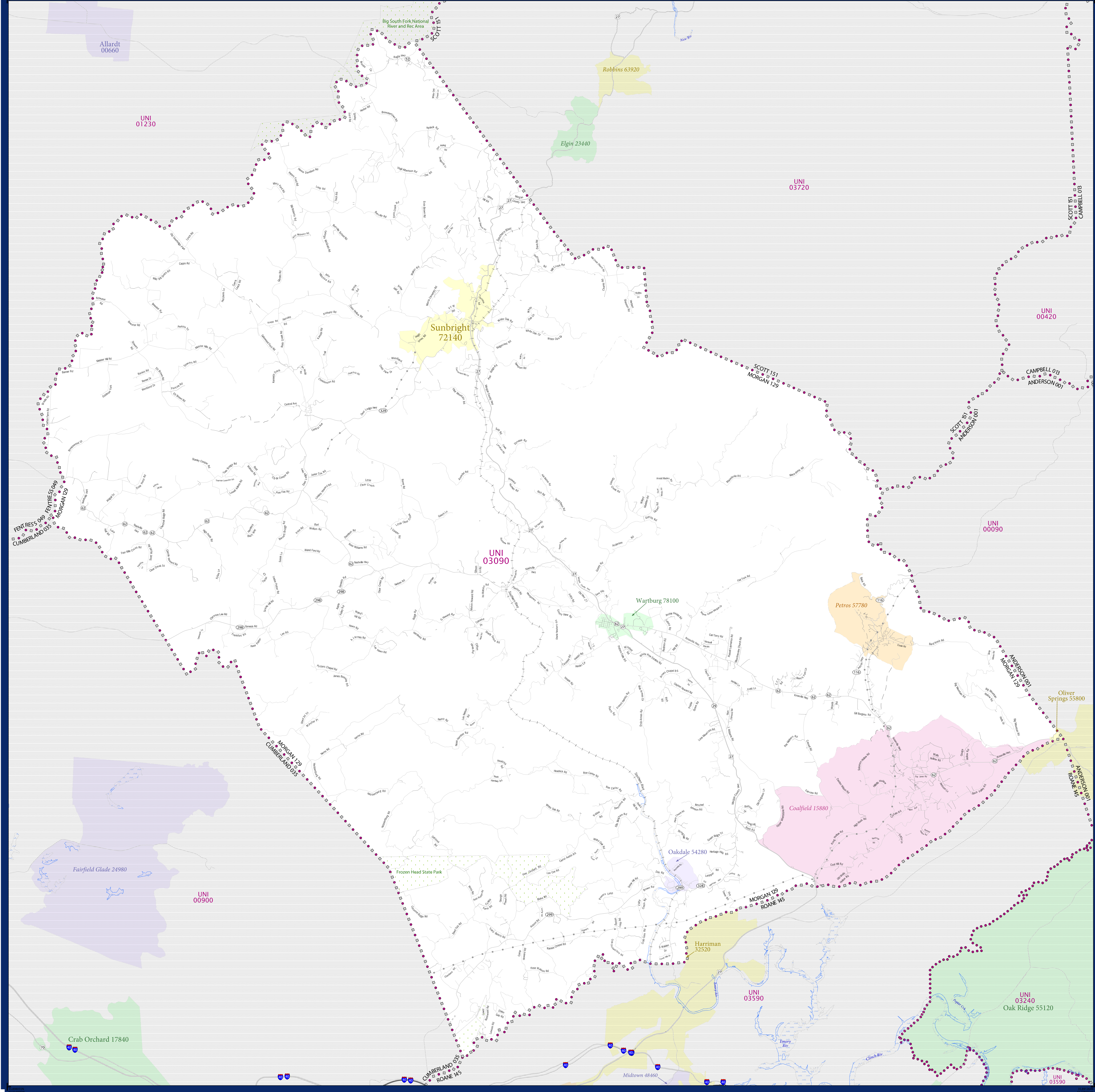


SCHOOL DISTRICT REFERENCE MAP (2010 CENSUS): Morgan County, TN



LEGEND	
SYMBOL DESCRIPTION	LABEL STYLE
Federal American Indian Reservation	L'ANSE RES 1880
Off-Reservation Trust Land	T1880
State American Indian Reservation	Tama Res 4125
Alaska Native Regional Corporation	NANA ANRC 52120
State (or statistically equivalent entity)	NEW YORK 36
County (or statistically equivalent entity)	ERIE 029
Minor Civil Division (MCD) ^{1,2}	Bristol town 07485
Consolidated City	MILFORD 47500
Incorporated Place ^{1,3}	Davis 18100
Census Designated Place (CDP) ³	Incline Village 35100
Unified School District	UNI 03370
Secondary School District	SEC 99965
Elementary School District	ELM 02220

DESCRIPTION	SYMBOL	DESCRIPTION	SYMBOL
Interstate	[Blue line with red shield]	Water Body	[Blue wavy line]
U.S. Highway	[Black line with white shield]	Swamp or Marsh	[Green wavy line]
State Highway	[Black line with white circle]	Glacier	[Blue wavy line]
Other Road	[Thin black line]	Military	[Blue wavy line]
4WD Trail, Steamer, Alley, Walkway, or Ferry	[Thin black line with cross-ticks]	National or State Park, Forest, or Recreation Area	[Green wavy line]
Railroad	[Black line with cross-ticks]	Inset Area	[Grey box with 'A']
Pipeline or Power Line	[Thin black line with cross-ticks]	Outside Subject Area	[Grey box with 'A']
Ridge or Fence	[Dashed black line]		
Property Line	[Dotted black line]		
Nonvisible Boundary or Feature Not Elsewhere Classified	[Thin black line]		

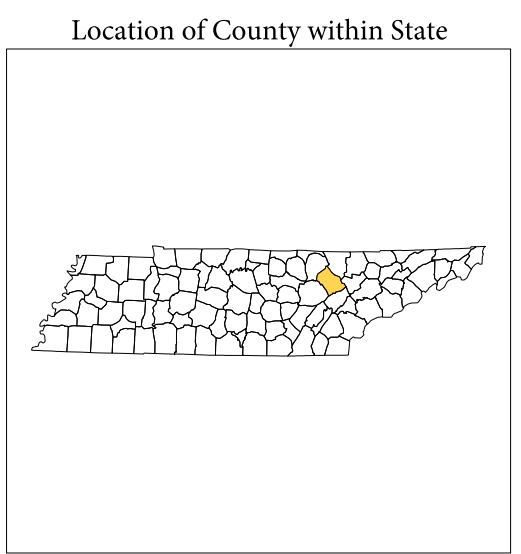
Where state, county, and/or MCD boundaries coincide, the map shows the boundary symbol for only the highest-ranking of these boundaries.

1 A "*" following an MCD name denotes a false MCD. A "*" following a place name indicates that a false MCD exists with the same name and FIPS code as the place; the false MCD label is not shown.

2 MCD boundaries are shown in the following states in which MCDs have functioning governments: Connecticut, Maine, Massachusetts, Michigan, Minnesota, New Hampshire, New Jersey, New York, Pennsylvania, Rhode Island, Vermont, and Wisconsin.

3 Place label color correlates to the place fill color.

SCHOOL DISTRICTS WITHIN COUNTY		
TYPE	CODE	NAME
UNI	03090	Morgan County School District

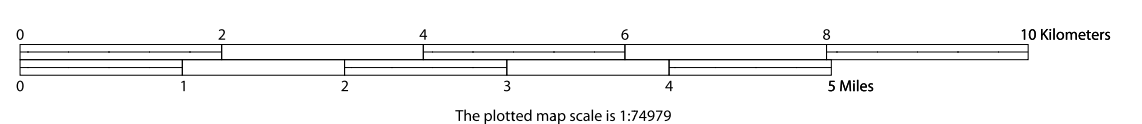


All legal boundaries and names are as of January 1, 2010. The boundaries shown on this map are for Census Bureau statistical data collection and tabulation purposes only; their depiction and designation for statistical purposes does not constitute a determination of jurisdictional authority or rights of ownership or entitlement.

Geographic Vintage: 2010 Census (reference date: January 1, 2010)
 Data Source: U.S. Census Bureau's MAINTIGR database (TAB100147)
 Map Created by Geography Division: December 12, 2010

U.S. DEPARTMENT OF COMMERCE Economics and Statistics Administration U.S. Census Bureau

Projection: Albers Equal Area Conic
 Datum: NAD 83
 Spheroid: GRS 80
 1st Standard Parallel: 35 16 28
 2nd Standard Parallel: 36 23 50
 Central Meridian: 85 58 43
 Latitude of Projection's Origin: 34 59 38
 False Easting: 0
 False Northing: 0



USCENSUSBUREAU

PARENT SHEET 1
 Total Sheets: 1
 Index Sheets: 0
 Parent Sheets: 1
 Inset Sheets: 0

NAME: Morgan County (129)
 ENTITY TYPE: County or statistically equivalent entity
 ST: Tennessee (47)

2010 SD MAP (PARENT)
 201047129001