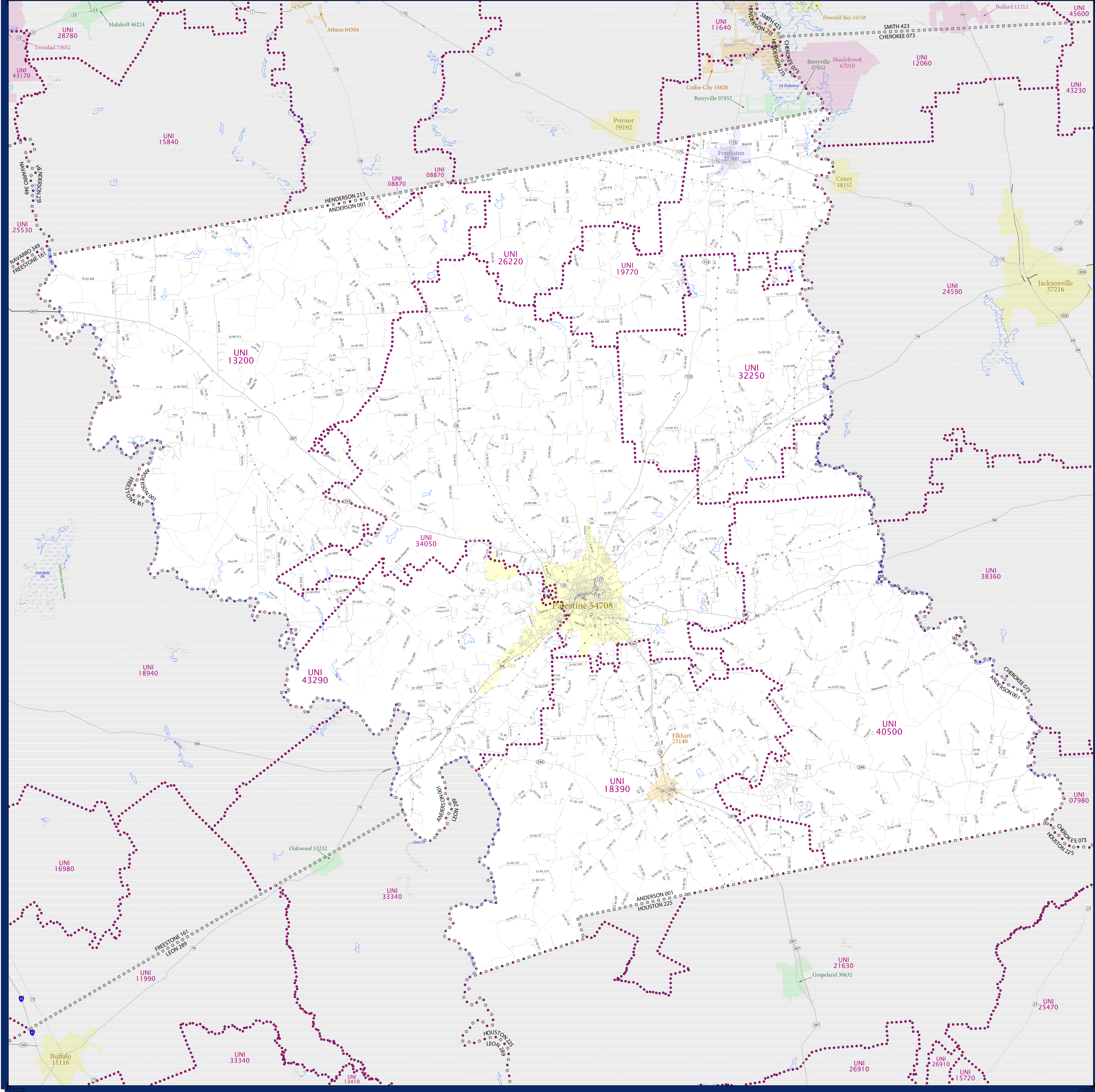


# SCHOOL DISTRICT REFERENCE MAP (2010 CENSUS): Anderson County, TX



| SYMBOL DESCRIPTION                          |          | LEGEND               |          |
|---|----------|----------------------|----------|
| Federal American Indian Reservation         | [Symbol] | L'ANSE RES 1880      | [Symbol] |
| Off-Reservation Trust Land                  | [Symbol] | T1880                | [Symbol] |
| State American Indian Reservation           | [Symbol] | Tama Res 4125        | [Symbol] |
| Alaska Native Regional Corporation          | [Symbol] | NANA ANRC 52120      | [Symbol] |
| State (or statistically equivalent entity)  | [Symbol] | NEW YORK 36          | [Symbol] |
| County (or statistically equivalent entity) | [Symbol] | ERIE 029             | [Symbol] |
| Minor Civil Division (MCD) <sup>1,2</sup>   | [Symbol] | Bristol town 07485   | [Symbol] |
| Consolidated City                           | [Symbol] | MILFORD 47500        | [Symbol] |
| Incorporated Place <sup>3</sup>             | [Symbol] | Davis 18100          | [Symbol] |
| Census Designated Place (CDP) <sup>3</sup>  | [Symbol] | Inline Village 35100 | [Symbol] |
| Unified School District                     | [Symbol] | UNI 03370            | [Symbol] |
| Secondary School District                   | [Symbol] | SEC 99965            | [Symbol] |
| Elementary School District                  | [Symbol] | ELM 02220            | [Symbol] |

| DESCRIPTION   | SYMBOL   | DESCRIPTION   | SYMBOL   |
|---|----------|---|----------|
| Interstate  | [Symbol] | Water Body  | [Symbol] |
| U.S. Highway  | [Symbol] | Swamp or Marsh                                      | [Symbol] |
| State Highway   | [Symbol] | Glacier   | [Symbol] |
| Other Road  | [Symbol] | Military  | [Symbol] |
| 4WD Trail, Stamen, Alley, Walkway, or Ferry             | [Symbol] | National or State Park, Forest, or Reservation Area | [Symbol] |
| Railroad  | [Symbol] | Inset Area  | [Symbol] |
| Pipeline or Power Line                                  | [Symbol] | Outside Subject Area                                | [Symbol] |
| Ridge or Fence  | [Symbol] |   |          |
| Property Line   | [Symbol] |   |          |
| Nonvisible Boundary or Feature Not Elsewhere Classified | [Symbol] |   |          |

Where state, county, and/or MCD boundaries coincide, the map shows the boundary symbol for only the highest-ranking of these boundaries.

1 A "\*" following an MCD name denotes a false MCD. A "\*" following a place name indicates that a false MCD exists with the same name and FIPS code as the place; the false MCD label is not shown.

2 MCD boundaries are shown in the following states in which MCDs have functioning governments: Connecticut, Maine, Massachusetts, Michigan, Minnesota, New Hampshire, New Jersey, New York, Pennsylvania, Rhode Island, Vermont, and Wisconsin.

3 Place label color correlates to the place fill color.

**SCHOOL DISTRICTS WITHIN COUNTY**

| TYPE | CODE  | NAME                                  |
|------|-------|---------------------------------------|
| UNI  | 08070 | Athens Independent School District    |
| UNI  | 13200 | Cayuga Independent School District    |
| UNI  | 18300 | Elkhart Independent School District   |
| UNI  | 19770 | Frankston Independent School District |
| UNI  | 26220 | Lagoyne Independent School District   |
| UNI  | 32250 | Meches Independent School District    |
| UNI  | 34050 | Palestine Independent School District |
| UNI  | 40500 | Slocum Independent School District    |
| UNI  | 43290 | Westwood Independent School District  |



All legal boundaries and names are as of January 1, 2010. The boundaries shown on this map are for Census Bureau's statistical data collection and tabulation purposes only; their depiction and designation for statistical purposes does not constitute a determination of jurisdictional authority or rights of ownership or entitlement.

Geographic Vintage: 2010 Census (reference date: January 1, 2010)  
 Data Source: U.S. Census Bureau's MAINTIGER database (TAB100148)  
 Map Created by Geography Division: November 30, 2010

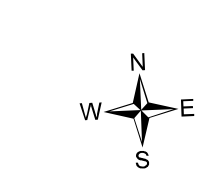
U.S. DEPARTMENT OF COMMERCE Economics and Statistics Administration U.S. Census Bureau

Projection: Albers Equal Area Conic  
 Datum: NAD83  
 Spheroid: GRS 80  
 1st Standard Parallel: 27 36 51  
 2nd Standard Parallel: 34 43 24  
 Central Meridian: -100 04 35  
 Latitude of Projection's Origin: 25 50 13  
 False Easting: 0  
 False Northing: 0

The plotted map scale is 1:112364

0 3 6 9 12 15 Kilometers  
 0 3 6 9 12 Miles

U.S. CENSUS BUREAU



PARENT SHEET 1  
 Total Sheets: 1  
 Index Sheets: 0  
 Parent Sheets: 1  
 Inset Sheets: 0

NAME: Anderson County (001)  
 ENTITY TYPE: County or statistically equivalent entity  
 ST: Texas (48)