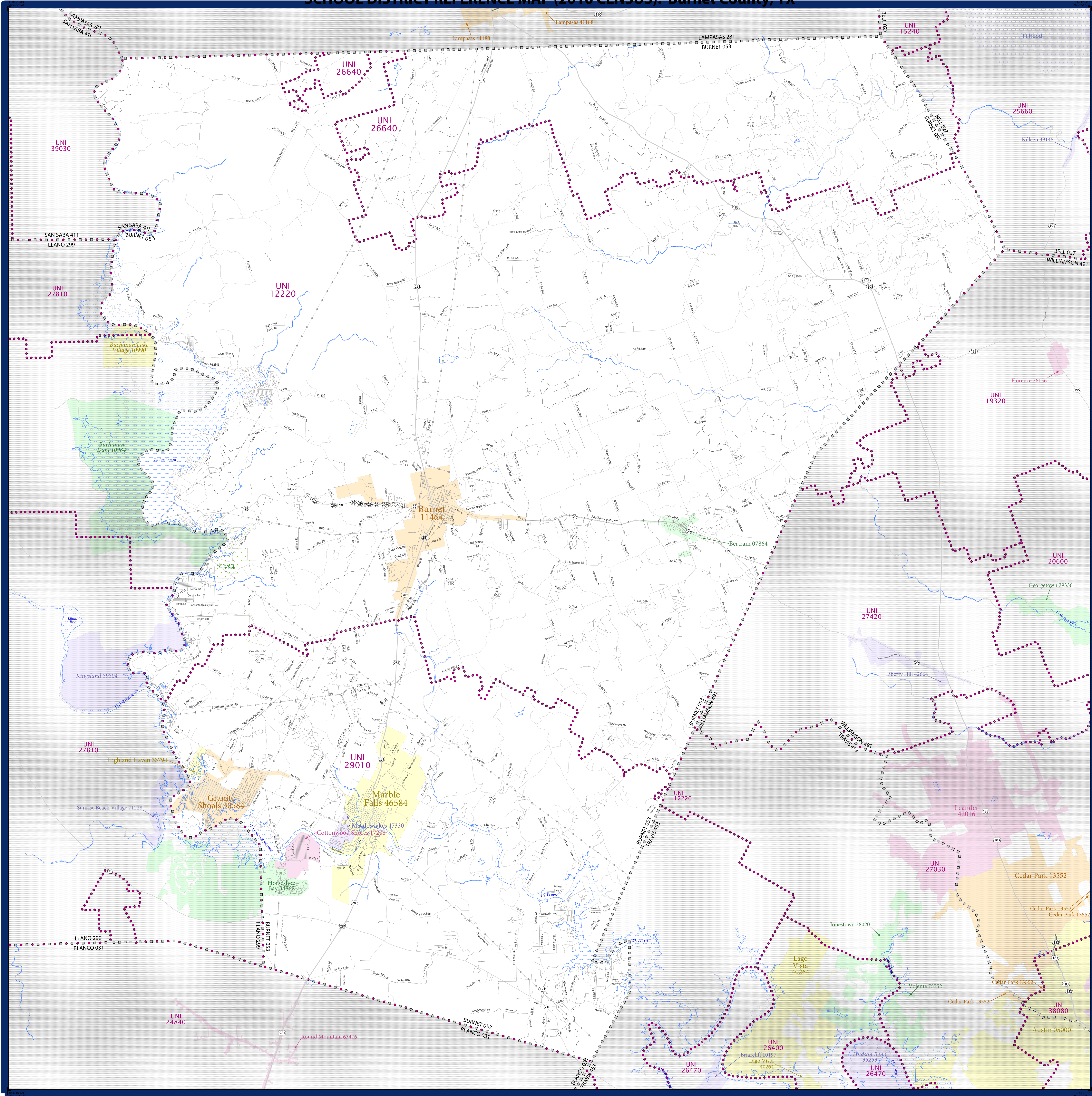


SCHOOL DISTRICT REFERENCE MAP (2010 CENSUS): Burnet County, TX



LEGEND

SYMBOL DESCRIPTION	SYMBOL	LABEL STYLE
Federal American Indian Reservation	[Dotted Pattern]	L'ANSE RES 1880
Off-Reservation Trust Land	[Dotted Pattern]	T1880
State American Indian Reservation	[Dotted Pattern]	Tama Res 4125
Alaska Native Regional Corporation	[Cross-hatch]	NANA ANRC 52120
State (or statistically equivalent entity)	[Thick Dashed]	NEW YORK 36
County (or statistically equivalent entity)	[Thin Dashed]	ERIE 029
Minor Civil Division (MCD) ^{1,2}	[Thin Dotted]	Bristol town 07485
Consolidated City	[Thick Dotted]	MILFORD 47500
Incorporated Place ³	[Color Fill]	Davis 18100
Census Designated Place (CDP) ³	[Color Fill]	Incline Village 35100
Unified School District	[Purple Dotted]	UNI 03370
Secondary School District	[Orange Dotted]	SEC 99965
Elementary School District	[Green Dotted]	ELM 02220

DESCRIPTION	SYMBOL	DESCRIPTION	SYMBOL
Interstate	[Blue Line]	Water Body	[Blue Wavy]
U.S. Highway	[Black Line]	Swamp or Marsh	[Blue Dotted]
State Highway	[Thin Black Line]	Glacier	[Blue Dotted]
Other Road	[Thin Black Line]	Military	[Blue Dotted]
Other	[Thin Black Line]	National or State Park, Forest, or Reservation Area	[Green Dotted]
Railroad	[Black Line with Cross-ticks]	Inset Area	[Grey Box]
Pipeline or Power Line	[Black Line with Cross-ticks]	Outside Subject Area	[Grey Box]
Ridge or Fence	[Thin Black Line with Dashes]		
Property Line	[Thin Black Line with Dashes]		
Nonvisible Boundary or Feature Not Elsewhere Classified	[Thin Black Line with Dashes]		

Where state, county, and/or MCD boundaries coincide, the map shows the boundary symbol for only the highest-ranking of these boundaries.

1 A "*" following an MCD name denotes a false MCD. A "*" following a place name indicates that a false MCD exists with the same name and FIPS code as the place; the false MCD label is not shown.

2 MCD boundaries are shown in the following states in which MCDs have functioning governments: Connecticut, Maine, Massachusetts, Michigan, Minnesota, New Hampshire, New Jersey, New York, Pennsylvania, Rhode Island, Vermont, and Wisconsin.

3 Place label color correlates to the place fill color.

SCHOOL DISTRICTS WITHIN COUNTY

UNI	SEC	ELM	NAME
12220			Burnet Consolidated Independent School District
26640			Lampasas Independent School District
29010			Marble Falls Independent School District



All legal boundaries and names are as of January 1, 2010. The boundaries shown on this map are for Census Bureau statistical data collection and tabulation purposes only; their depiction and designation for statistical purposes does not constitute a determination of jurisdictional authority or rights of ownership or entitlement.

Geographic Vintage: 2010 Census (reference date: January 1, 2010)
 Data Source: U.S. Census Bureau's MAINTENANCE database (TAB100148)
 Map Created by Geography Division: December 10, 2010

U.S. DEPARTMENT OF COMMERCE Economics and Statistics Administration U.S. Census Bureau

Projection: Albers Equal Area Conic
 Datum: NAD 83
 Spheroid: GRS 80
 1st Standard Parallel: 27 36 51
 2nd Standard Parallel: 34 43 24
 Central Meridian: -100 04 35
 Latitude of Projection's Origin: 25 50 13
 False Easting: 0
 False Northing: 0

The plotted map scale is 1:98221

USCENSUSBUREAU