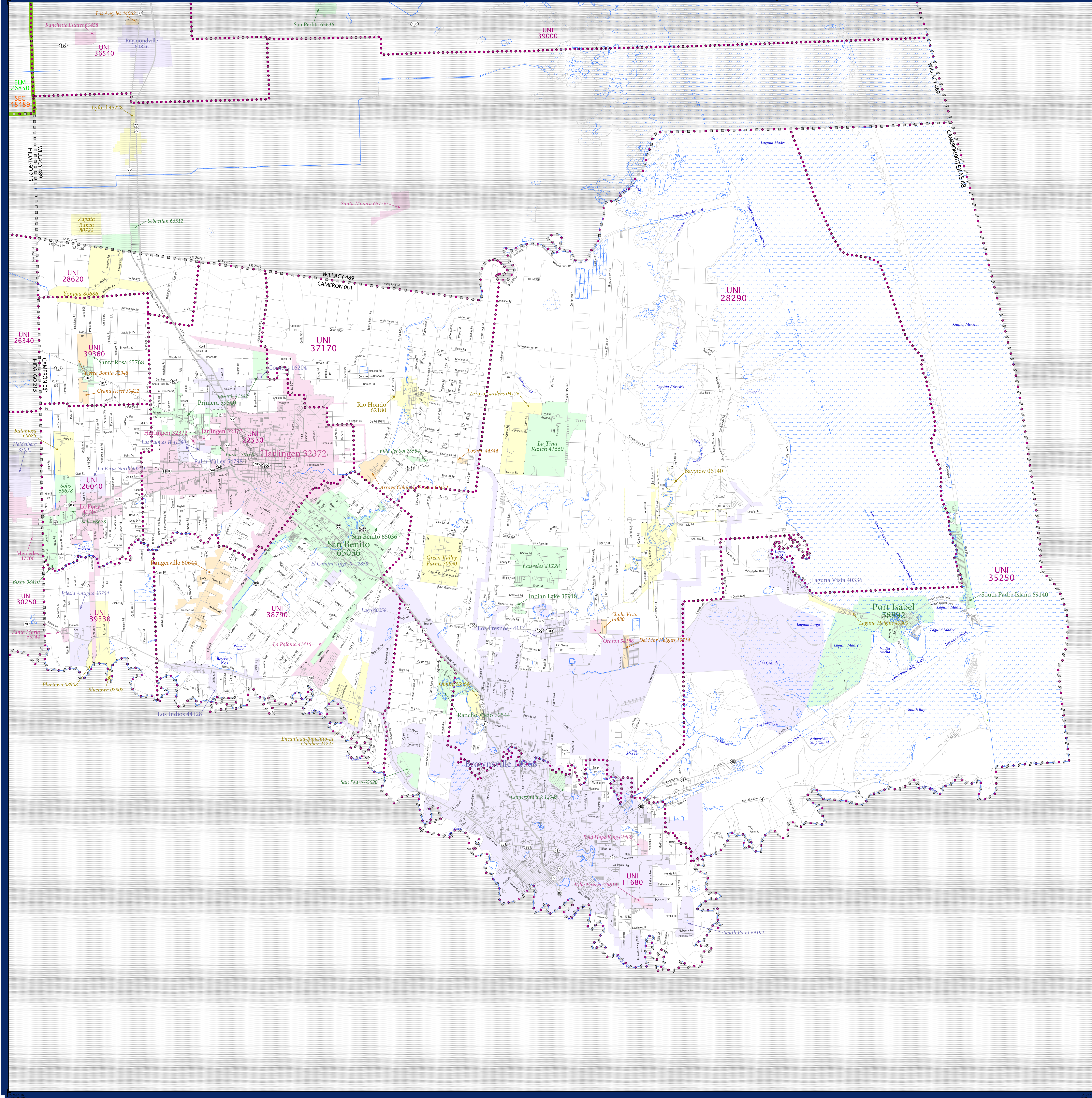


# SCHOOL DISTRICT REFERENCE MAP (2010 CENSUS): Cameron County, TX



SYMBOL DESCRIPTION		LEGEND	
	Federal American Indian Reservation		L'ANSE RES 1880
	Off-Reservation Trust Land		T1880
	State American Indian Reservation		Tama Res 4125
	Alaska Native Regional Corporation		NANA ANRC 52120
	State (or statistically equivalent entity)		NEW YORK 36
	County (or statistically equivalent entity)		ERIE 029
	Minor Civil Division (MCD) <sup>1,2</sup>		Bristol town 07485
	Consolidated City		MILFORD 47500
	Incorporated Place <sup>1,3</sup>		Davis 18100
	Census Designated Place (CDP) <sup>3</sup>		Incline Village 35100
	Unified School District		UNI 03370
	Secondary School District		SEC 99965
	Elementary School District		ELM 02220

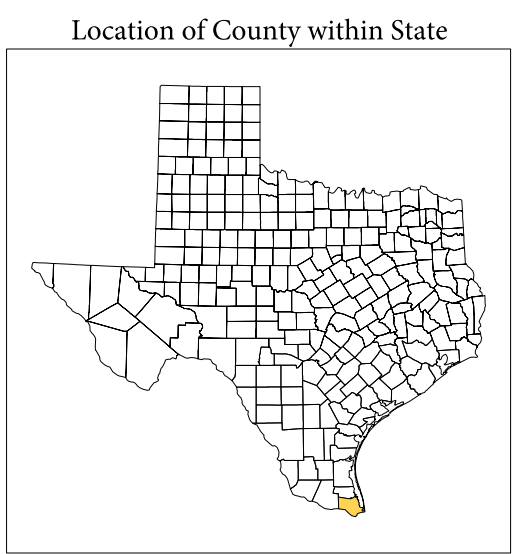
Where state, county, and/or MCD boundaries coincide, the map shows the boundary symbol for only the highest-ranking of these boundaries.

1 A "\*" following an MCD name denotes a false MCD. A "\*" following a place name indicates that a false MCD exists with the same name and FIPS code as the place; the false MCD label is not shown.

2 MCD boundaries are shown in the following states in which MCDs have functioning governments: Connecticut, Maine, Massachusetts, Michigan, Minnesota, New Hampshire, New Jersey, New York, Pennsylvania, Rhode Island, Vermont, and Wisconsin.

3 Place label color correlates to the place fill color.

SCHOOL DISTRICTS WITHIN COUNTY		
TYPE	CODE	NAME
UNI	11600	Brownsville Independent School District
UNI	22530	Harlingen Consolidated Independent School District
UNI	26040	La Feria Independent School District
UNI	28200	Los Fresnos Consolidated Independent School District
UNI	28620	Lyford Consolidated Independent School District
UNI	32520	Point Isabel Independent School District
UNI	37170	Rio Hondo Independent School District
UNI	38790	San Benito Consolidated Independent School District
UNI	39330	Santa Maria Independent School District
UNI	39360	Santa Rosa Independent School District



All legal boundaries and names are as of January 1, 2010. The boundaries shown on this map are for Census Bureau statistical data collection and tabulation purposes only; their depiction and designation for statistical purposes does not constitute a determination of jurisdictional authority or rights of ownership or entitlement.

Geographic: Vintage: 2010 Census (reference date: January 1, 2010)  
 Data Source: U.S. Census Bureau's MAINTIGR database (TAB00148)  
 Map Created by Geography Division: November 28, 2010

U.S. DEPARTMENT OF COMMERCE Economics and Statistics Administration U.S. Census Bureau

Projection: Albers Equal Area Conic  
 Datum: NAD 83  
 Spheroid: GRS 80  
 1st Standard Parallel: 27 36 51  
 2nd Standard Parallel: 34 43 24  
 Central Meridian: -100 04 35  
 Latitude of Projection's Origin: 25 50 13  
 False Easting: 0  
 False Northing: 0

The plotted map scale is 1:112908



PARENT SHEET 1  
 Total Sheets: 1  
 Index Sheets: 0  
 Parent Sheets: 1  
 Inset Sheets: 0

NAME: Cameron County (061)  
 ENTITY TYPE: County or statistically equivalent entity  
 ST: Texas (48)