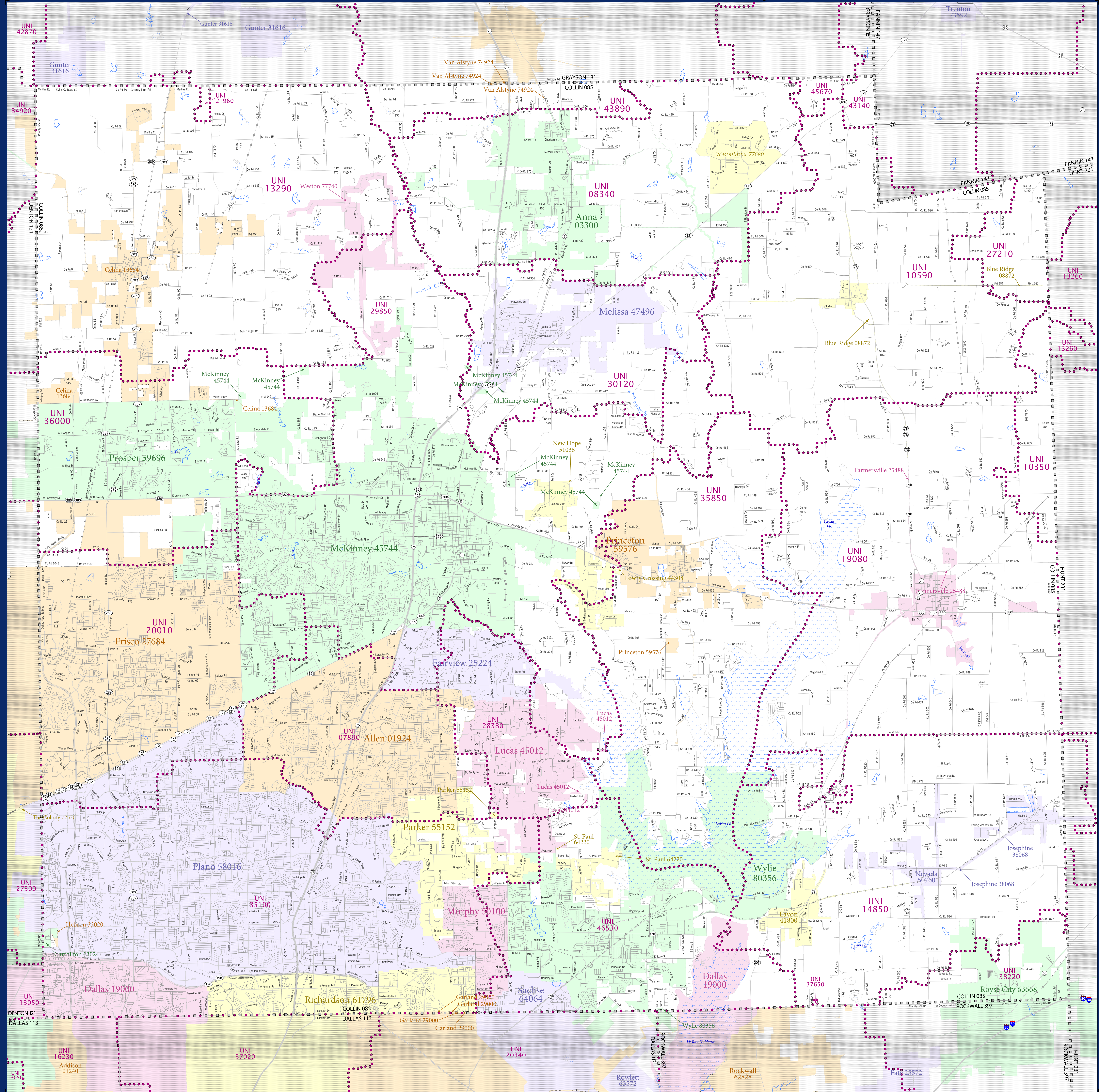


# SCHOOL DISTRICT REFERENCE MAP (2010 CENSUS): Collin County, TX



### LEGEND

SYMBOL DESCRIPTION	SYMBOL	SYMBOL	DESCRIPTION	SYMBOL
Federal American Indian Reservation	[Symbol]	L'ANSE RES 1880	Water Body	[Symbol]
Off-Reservation Trust Land	[Symbol]	T1880	Swamp or Marsh	[Symbol]
State American Indian Reservation	[Symbol]	Tama Res 4125	Glacier	[Symbol]
Alaska Native Regional Corporation	[Symbol]	NANA ANRC 52120	Military	[Symbol]
State (or statistically equivalent entity)	[Symbol]	NEW YORK 36	National or State Park, Forest, or Recreation Area	[Symbol]
County (or statistically equivalent entity)	[Symbol]	ERIE 029	Inset Area	[Symbol]
Minor Civil Division (MCD) <sup>1,2</sup>	[Symbol]	Bristol town 07485	Outside Subject Area	[Symbol]
Consolidated City	[Symbol]	MILFORD 47500		
Incorporated Place <sup>1,3</sup>	[Symbol]	Davis 18100		
Census Designated Place (CDP) <sup>3</sup>	[Symbol]	Incline Village 35100		
Unified School District	[Symbol]	UNI 03370		
Secondary School District	[Symbol]	SEC 99965		
Elementary School District	[Symbol]	ELM 02220		

DESCRIPTION	SYMBOL	DESCRIPTION	SYMBOL
Interstate	[Symbol]	Plusieur Lake	[Symbol]
U.S. Highway	[Symbol]	Okfuskee Swamp	[Symbol]
State Highway	[Symbol]	Bering Glacier	[Symbol]
Other Road	[Symbol]	Fort Belvoir	[Symbol]
4WD Trail, Stoney, Alley, Walkway, or Ferry	[Symbol]	Yosemite NP	[Symbol]
Railroad	[Symbol]		
Pipeline or Power Line	[Symbol]		
Ridge or Fence	[Symbol]		
Property Line	[Symbol]		
Nonvisible Boundary or Feature Not Elsewhere Classified	[Symbol]		

Where state, county, and/or MCD boundaries coincide, the map shows the boundary symbol for only the highest-ranking of these boundaries.

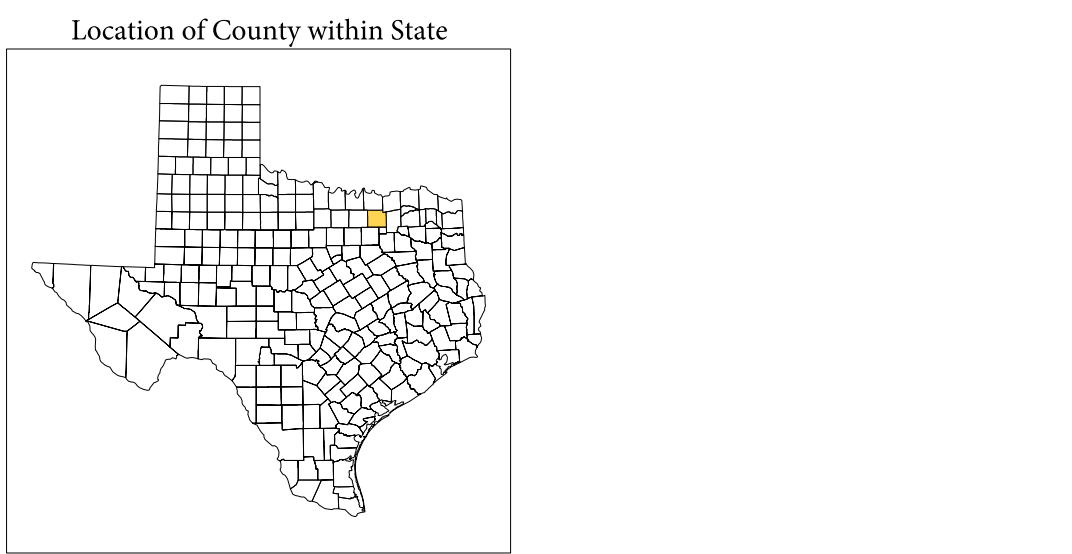
1 A "\*" following an MCD name denotes a false MCD. A "\*" following a place name indicates that a false MCD exists with the same name and FIPS code as the place; the false MCD label is not shown.

2 MCD boundaries are shown in the following states in which MCDs have functioning governments: Connecticut, Maine, Massachusetts, Michigan, Minnesota, New Hampshire, New Jersey, New York, Pennsylvania, Rhode Island, Vermont, and Wisconsin.

3 Place label color correlates to the place fill color.

### SCHOOL DISTRICTS WITHIN COUNTY

TYPE	CODE	NAME
UNI	07900	Allen Independent School District
UNI	08340	Anna Independent School District
UNI	10350	Blair Independent School District
UNI	10590	Blue Ridge Independent School District
UNI	13290	Celina Independent School District
UNI	14850	Community Independent School District
UNI	19080	Farmersville Independent School District
UNI	20010	Frisco Independent School District
UNI	21960	Gunter Independent School District
UNI	22710	Leonard Independent School District
UNI	23850	Lowrey Independent School District
UNI	29850	McKinney Independent School District
UNI	30120	Melissa Independent School District
UNI	35100	Piano Independent School District
UNI	35850	Princeton Independent School District
UNI	36000	Prosper Independent School District
UNI	37650	Rockwall Independent School District
UNI	38220	Royce City Independent School District
UNI	43140	Trenton Independent School District
UNI	43890	Van Alstyne Independent School District
UNI	45670	Whitehouse Independent School District
UNI	46530	Wylie Independent School District



All legal boundaries and names are as of January 1, 2010. The boundaries shown on this map are for Census Bureau statistical data collection and tabulation purposes only; their depiction and designation for statistical purposes does not constitute a determination of jurisdictional authority or rights of ownership or entitlement.

Geographic Vintage: 2010 Census (reference date: January 1, 2010)  
 Data Source: U.S. Census Bureau's MA/7IGR database (TAB100148)  
 Map Created by Geography Division: November 29, 2010

Projection: Albers Equal Area Conic  
 Datum: NAD83  
 Spheroid: GRS 80  
 1st Standard Parallel: 27 36 51  
 2nd Standard Parallel: 34 43 24  
 Central Meridian: -100 04 35  
 Latitude of Projection's Origin: 25 50 13  
 False Easting: 0  
 False Northing: 0



The plotted map scale is 1:74337



PARENT SHEET 1  
 Total Sheets: 1  
 Index Sheets: 0  
 Parent Sheets: 1  
 Inset Sheets: 0

NAME: Collin County (085)  
 ENTITY TYPE: County or statistically equivalent entity  
 ST: Texas (48)