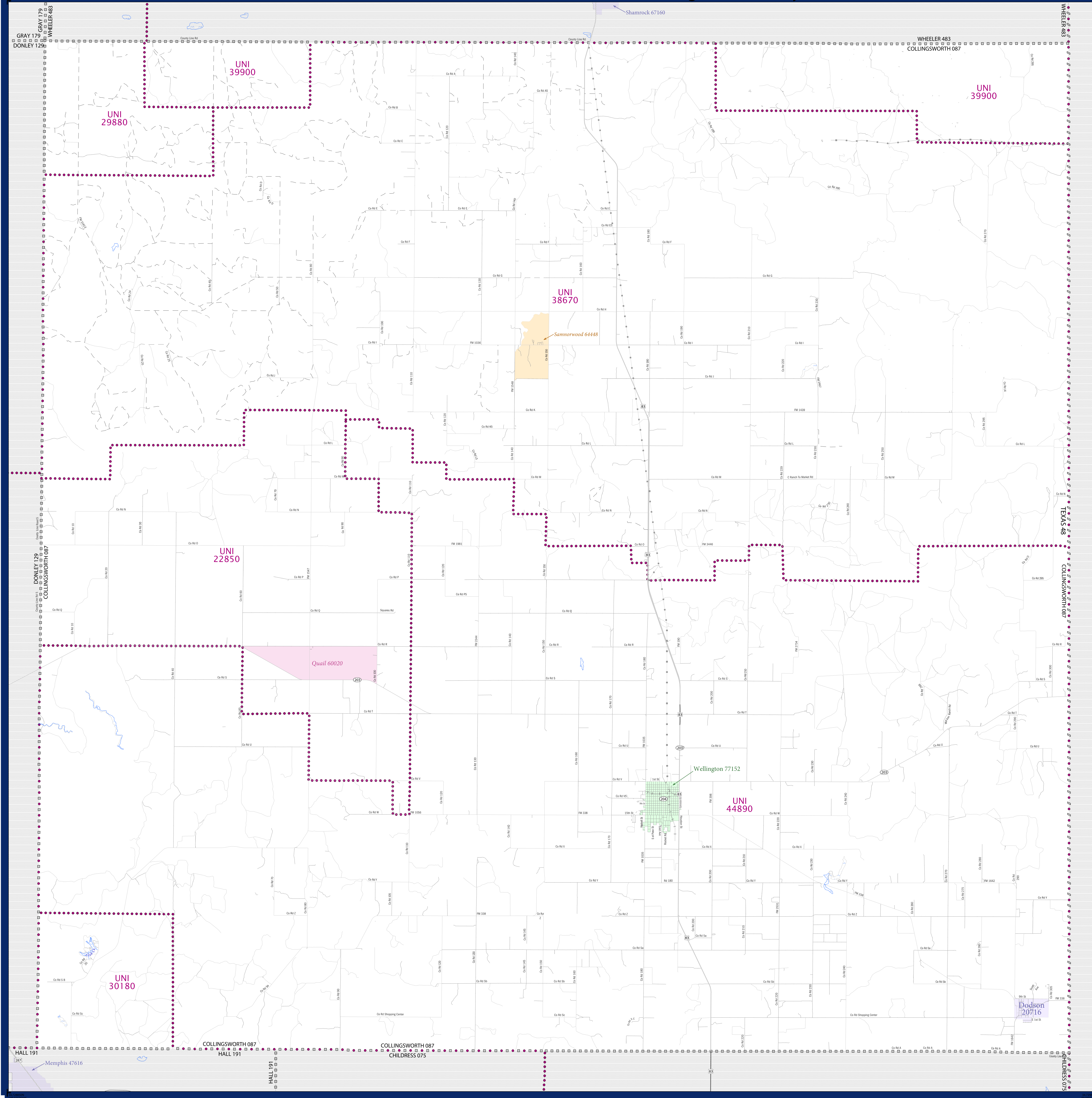


SCHOOL DISTRICT REFERENCE MAP (2010 CENSUS): Collingsworth County, TX



LEGEND

SYMBOL DESCRIPTION	SYMBOL	LABEL STYLE
Federal American Indian Reservation	[Symbol]	L'ANSE RES 1880
Off-Reservation Trust Land	[Symbol]	T1880
State American Indian Reservation	[Symbol]	Tama Res 4125
Alaska Native Regional Corporation	[Symbol]	NANA ANRC 52120
State (or statistically equivalent entity)	[Symbol]	NEW YORK 36
County (or statistically equivalent entity)	[Symbol]	ERIE 029
Minor Civil Division (MCD) ^{1,2}	[Symbol]	Bristol town 07485
Consolidated City	[Symbol]	MILFORD 47500
Incorporated Place ^{1,3}	[Symbol]	Davis 18100
Census Designated Place (CDP) ³	[Symbol]	Incline Village 35100
Unified School District	[Symbol]	UNI 03370
Secondary School District	[Symbol]	SEC 99965
Elementary School District	[Symbol]	ELM 02220

DESCRIPTION	SYMBOL	DESCRIPTION	SYMBOL
Interstate	[Symbol]	Water Body	[Symbol]
U.S. Highway	[Symbol]	Swamp or Marsh	[Symbol]
State Highway	[Symbol]	Marsh Lin	[Symbol]
Other Road	[Symbol]	Glacier	[Symbol]
4WD Trail, Stamen, Alley, Walkway, or Ferry	[Symbol]	Military	[Symbol]
Railroad	[Symbol]	National or State Park, Forest, or Recreation Area	[Symbol]
Pipeline or Power Line	[Symbol]	Inset Area	[Symbol]
Ridge or Fence	[Symbol]	Outside Subject Area	[Symbol]
Property Line	[Symbol]		
Nonvisible Boundary or Feature Not Elsewhere Classified	[Symbol]		

Where state, county, and/or MCD boundaries coincide, the map shows the boundary symbol for only the highest-ranking of these boundaries.

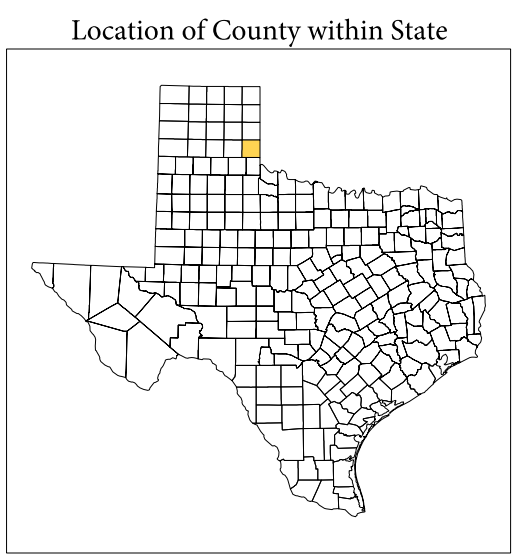
1 A "*" following an MCD name denotes a false MCD. A "*" following a place name indicates that a false MCD exists with the same name and FIPS code as the place; the false MCD label is not shown.

2 MCD boundaries are shown in the following states in which MCDs have functioning governments: Connecticut, Maine, Massachusetts, Michigan, Minnesota, New Hampshire, New Jersey, New York, Pennsylvania, Rhode Island, Vermont, and Wisconsin.

3 Place label color correlates to the place fill color.

SCHOOL DISTRICTS WITHIN COUNTY

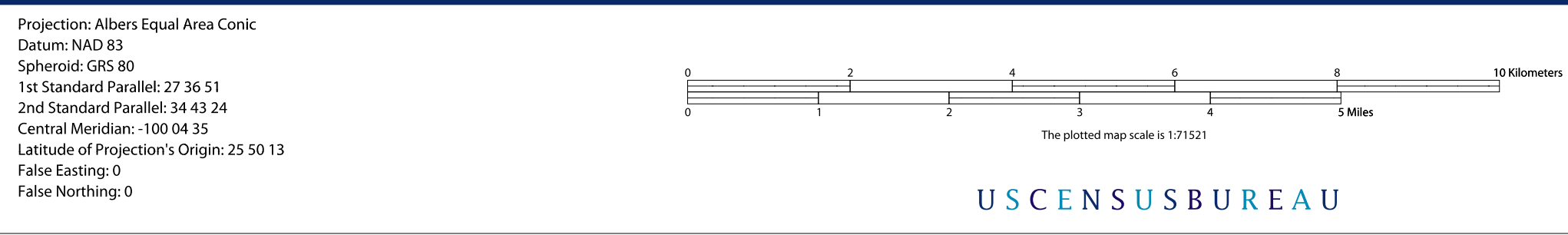
TYPE	CODE	NAME
UNI	22850	Holly Independent School District
UNI	29880	McLean Independent School District
UNI	30180	Memphis Independent School District
UNI	38670	Sammorwood Independent School District
UNI	39900	Shamrock Independent School District
UNI	44890	Wellington Independent School District



All legal boundaries and names are as of January 1, 2010. The boundaries shown on this map are for Census Bureau statistical data collection and tabulation purposes only; their depiction and designation for statistical purposes does not constitute a determination of jurisdictional authority or rights of ownership or entitlement.

Geographic Vintage: 2010 Census (reference date: January 1, 2010)
 Data Source: U.S. Census Bureau's MAINTIGR database (TAB100148)
 Map Created by Geography Division: November 29, 2010

U.S. DEPARTMENT OF COMMERCE Economics and Statistics Administration U.S. Census Bureau



PARENT SHEET 1
 Total Sheets: 1
 Index Sheets: 0
 Parent Sheets: 1
 Inset Sheets: 0

NAME: Collingsworth County (087)
 ENTITY TYPE: County or statistically equivalent entity
 ST: Texas (48)

2010 SD MAP (PARENT)
 2010480701