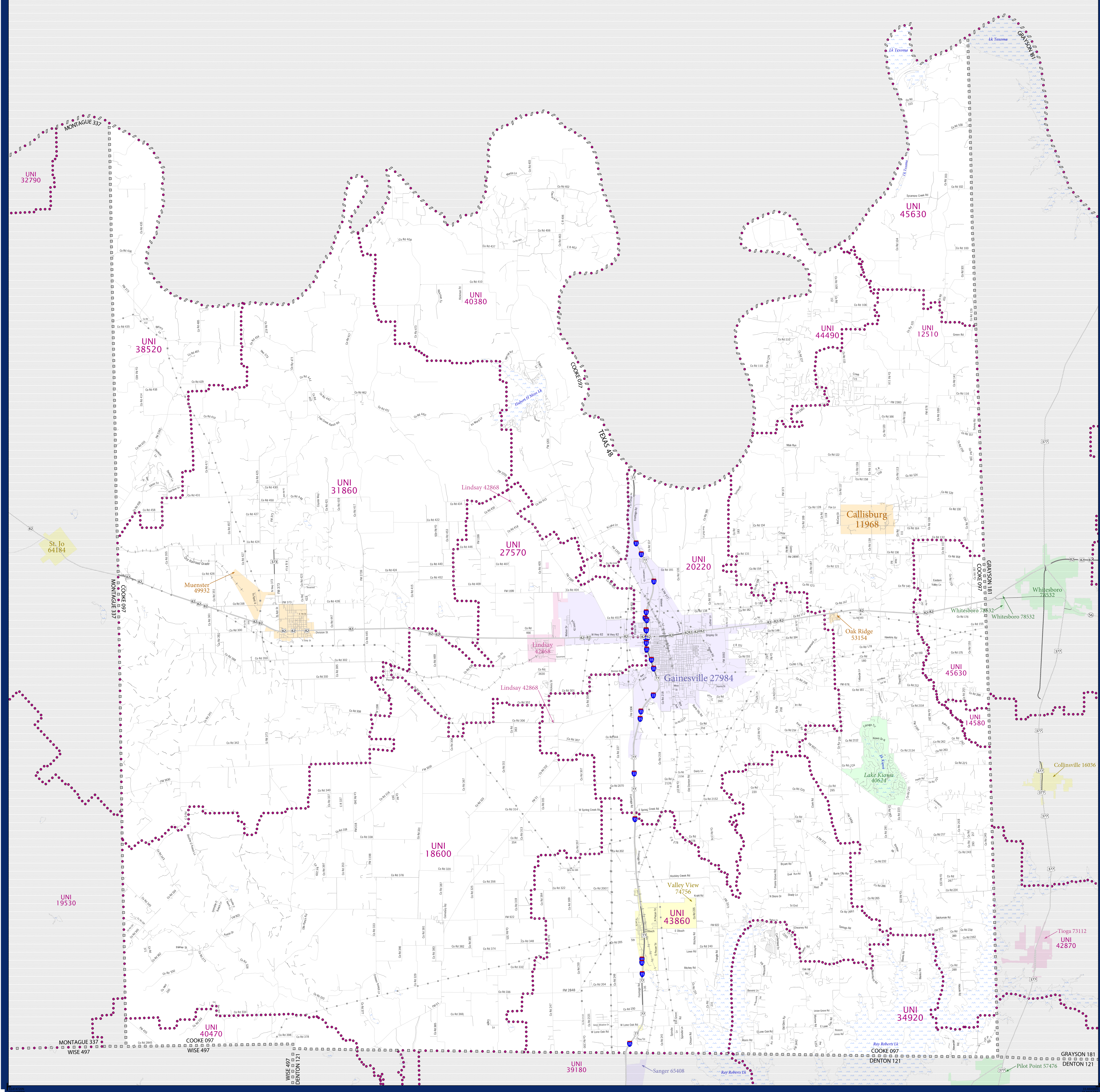


SCHOOL DISTRICT REFERENCE MAP (2010 CENSUS): Cooke County, TX



LEGEND

SYMBOL DESCRIPTION	SYMBOL	SYMBOL	SYMBOL	SYMBOL	SYMBOL
Federal American Indian Reservation	[Symbol]	L'ANSE RES 1880	Water Body	[Symbol]	Pleasant Lake
Off-Reservation Trust Land	[Symbol]	T1880	Swamp or Marsh	[Symbol]	Ogishches Swamp
State American Indian Reservation	[Symbol]	Tama Res 4125	Glacier	[Symbol]	Bering Glacier
Alaska Native Regional Corporation	[Symbol]	NANA ANRC 52120	Military	[Symbol]	Fort Belvoir
State (or statistically equivalent entity)	[Symbol]	NEW YORK 36	National or State Park, Forest, or Recreation Area	[Symbol]	Yosemite NP
County (or statistically equivalent entity)	[Symbol]	ERIE 029	Inset Area	[Symbol]	A
Minor Civil Division (MCD) ^{1,2}	[Symbol]	Bristol town 07485	Outside Subject Area	[Symbol]	
Consolidated City	[Symbol]	MILFORD 47500			
Incorporated Place ³	[Symbol]	Davis 18100			
Census Designated Place (CDP) ³	[Symbol]	Incline Village 35100			
Unified School District	[Symbol]	UNI 03370			
Secondary School District	[Symbol]	SEC 99655			
Elementary School District	[Symbol]	ELM 02220			

Where state, county, and/or MCD boundaries coincide, the map shows the boundary symbol for only the highest-ranking of these boundaries.

1 A "*" following an MCD name denotes a false MCD. A "*" following a place name indicates that a false MCD exists with the same name and FIPS code as the place; the false MCD label is not shown.

2 MCD boundaries are shown in the following states in which MCDs have functioning governments: Connecticut, Maine, Massachusetts, Michigan, Minnesota, New Hampshire, New Jersey, New York, Pennsylvania, Rhode Island, Vermont, and Wisconsin.

3 Place label color correlates to the place fill color.

SCHOOL DISTRICTS WITHIN COUNTY

TYPE	CODE	NAME
UNI	12510	Callisburg Independent School District
UNI	14580	Collinsville Independent School District
UNI	18600	Eta Independent School District
UNI	20220	Gainesville Independent School District
UNI	27570	Lindsay Independent School District
UNI	31860	Muenster Independent School District
UNI	34920	Pilot Point Independent School District
UNI	38520	St. Jo Independent School District
UNI	40380	Sivells Bend Independent School District
UNI	40470	Shelby Independent School District
UNI	43860	Valley View Independent School District
UNI	44490	Walnut Bend Independent School District
UNI	45630	Whitesboro Independent School District
UNI	46630	Whitesboro Independent School District



All legal boundaries and names are as of January 1, 2010. The boundaries shown on this map are for Census Bureau statistical data collection and tabulation purposes only; their depiction and designation for statistical purposes does not constitute a determination of jurisdictional authority or rights of ownership or entitlement.

Geographic: Vintage: 2010 Census (reference date: January 1, 2010)
 Data Source: U.S. Census Bureau's MAINTIGER database (TAB000148)
 Map Created by Geography Division: November 29, 2010

U.S. DEPARTMENT OF COMMERCE Economics and Statistics Administration U.S. Census Bureau

Projection: Albers Equal Area Conic
 Datum: NAD83
 Spheroid: GRS 80
 1st Standard Parallel: 27 36 51
 2nd Standard Parallel: 34 43 24
 Central Meridian: -100 04 35
 Latitude of Projection's Origin: 25 50 13
 False Easting: 0
 False Northing: 0

The plotted map scale is 1:26446

U.S. CENSUS BUREAU

PARENT SHEET 1
 Total Sheets: 1
 Index Sheets: 0
 Parent Sheets: 1
 Inset Sheets: 0

NAME: Cooke County (097)
 ENTITY TYPE: County or statistically equivalent entity
 ST: Texas (48)