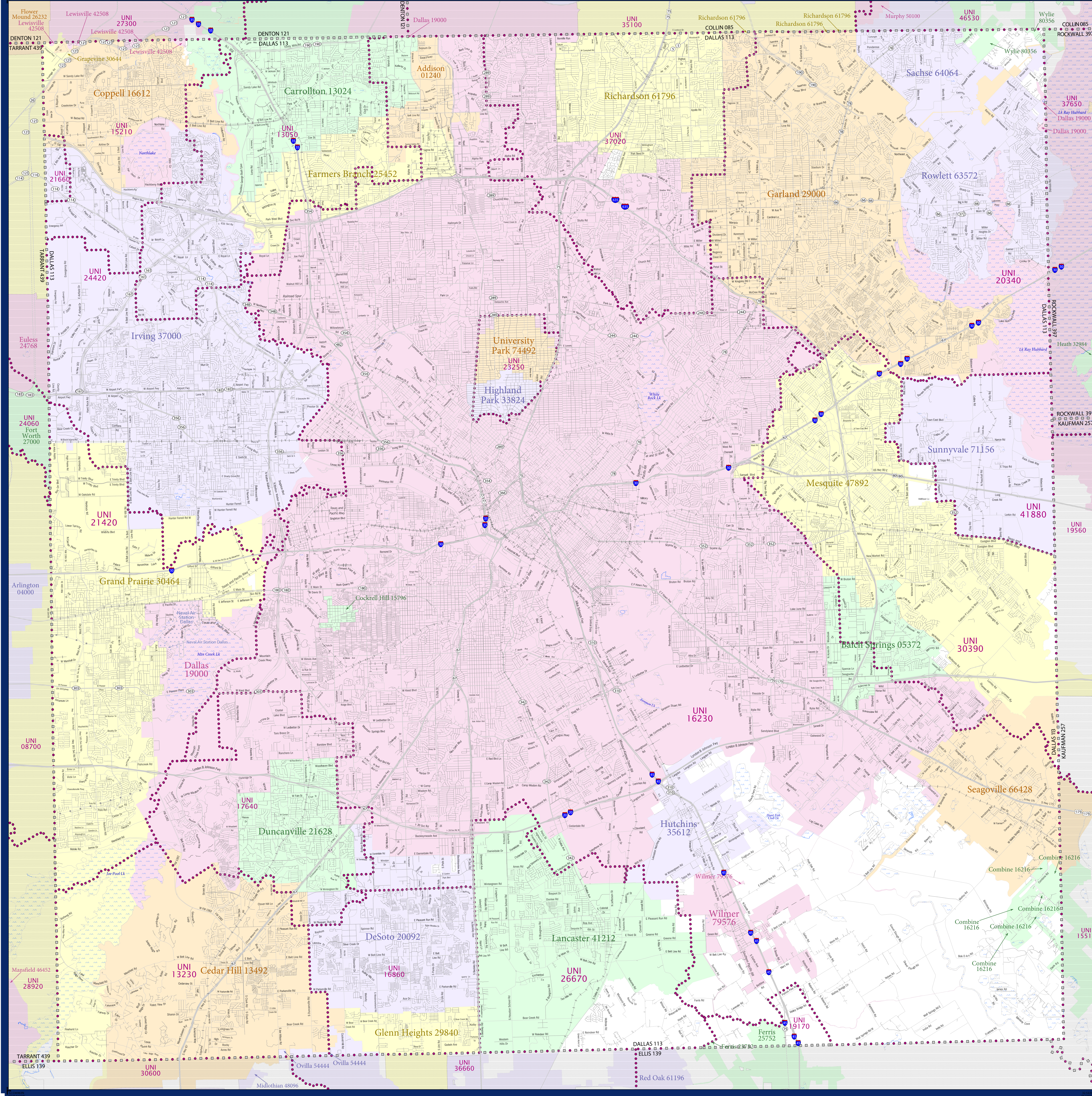


SCHOOL DISTRICT REFERENCE MAP (2010 CENSUS): Dallas County, TX



LEGEND

SYMBOL DESCRIPTION	SYMBOL	SYMBOL DESCRIPTION	SYMBOL
Federal American Indian Reservation	[Dotted pattern]	Water Body	[Blue wavy line]
Off-Reservation Trust Land	[Dotted pattern]	Swamp or Marsh	[Green wavy line]
State American Indian Reservation	[Dotted pattern]	Glacier	[Blue wavy line]
Alaska Native Regional Corporation	[Dotted pattern]	Military	[Blue wavy line]
State (or statistically equivalent entity)	[Dotted pattern]	National or State Park, Forest, or Reservation Area	[Blue wavy line]
County (or statistically equivalent entity)	[Dotted pattern]	Inset Area	[Blue wavy line]
Minor Civil Division (MCD) ^{1,2}	[Dotted pattern]	Outside Subject Area	[Blue wavy line]
Consolidated City	[Dotted pattern]		
Incorporated Place ^{1,3}	[Dotted pattern]		
Census Designated Place (CDP) ¹	[Dotted pattern]		
Unified School District	[Red dashed line]		
Secondary School District	[Orange dashed line]		
Elementary School District	[Green dashed line]		

Where state, county, and/or MCD boundaries coincide, the map shows the boundary symbol for only the highest-ranking of these boundaries.

1 A "*" following an MCD name denotes a false MCD. A "*" following a place name indicates that a false MCD exists with the same name and FIPS code as the place; the false MCD label is not shown.

2 MCD boundaries are shown in the following states in which MCDs have functioning governments: Connecticut, Maine, Massachusetts, Michigan, Minnesota, New Hampshire, New Jersey, New York, Pennsylvania, Rhode Island, Vermont, and Wisconsin.

3 Place label color correlates to the place fill color.

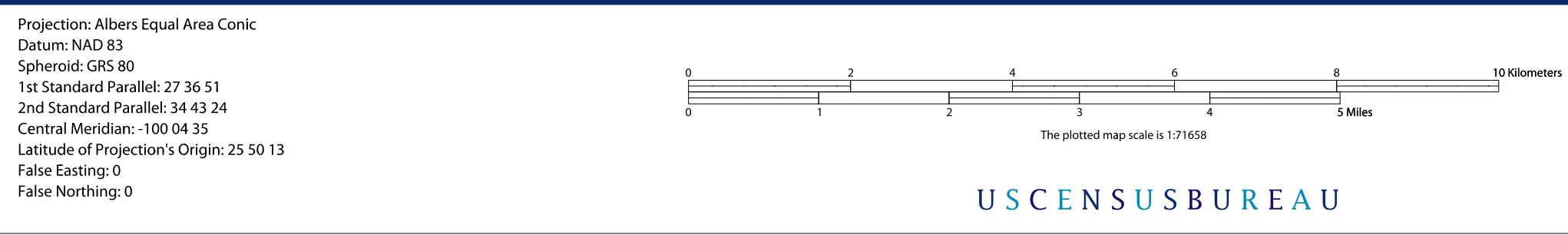
SCHOOL DISTRICTS WITHIN COUNTY

TYPE	CODE	NAME
UNI	1320	Canton-Farmers Branch Independent School District
UNI	1320	Cedar Hill Independent School District
UNI	1320	Coppell Independent School District
UNI	16230	Dallas Independent School District
UNI	16860	DeSoto Independent School District
UNI	17640	Duncanville Independent School District
UNI	19170	Ferris Independent School District
UNI	20340	Garland Independent School District
UNI	21420	Grand Prairie Independent School District
UNI	21660	Grapevine-Colleyville Independent School District
UNI	23250	Highland Park Independent School District
UNI	24420	Irving Independent School District
UNI	26610	Lancaster Independent School District
UNI	30390	Mesquite Independent School District
UNI	37020	Richardson Independent School District
UNI	41880	Sunnyvale Independent School District



All legal boundaries and names are as of January 1, 2010. The boundaries shown on this map are for Census Bureau statistical data collection and tabulation purposes only; their depiction and designation for statistical purposes does not constitute a determination of jurisdictional authority or rights of ownership or entitlement.

Geographic: Vintage: 2010 Census (reference date: January 1, 2010)
 Data Source: U.S. Census Bureau's MAINTIGR database (TAB00148)
 Map Created by Geography Division: December 10, 2010



U.S. DEPARTMENT OF COMMERCE Economics and Statistics Administration U.S. Census Bureau

USCENSUSBUREAU

PARENT SHEET 1
 Total Sheets: 1
 Index Sheets: 0
 Parent Sheets: 1
 Inset Sheets: 0

NAME: Dallas County (113)
 ENTITY TYPE: County or statistically equivalent entity
 ST: Texas (48)

2010 SD MAP (PARENT)
 20040113001