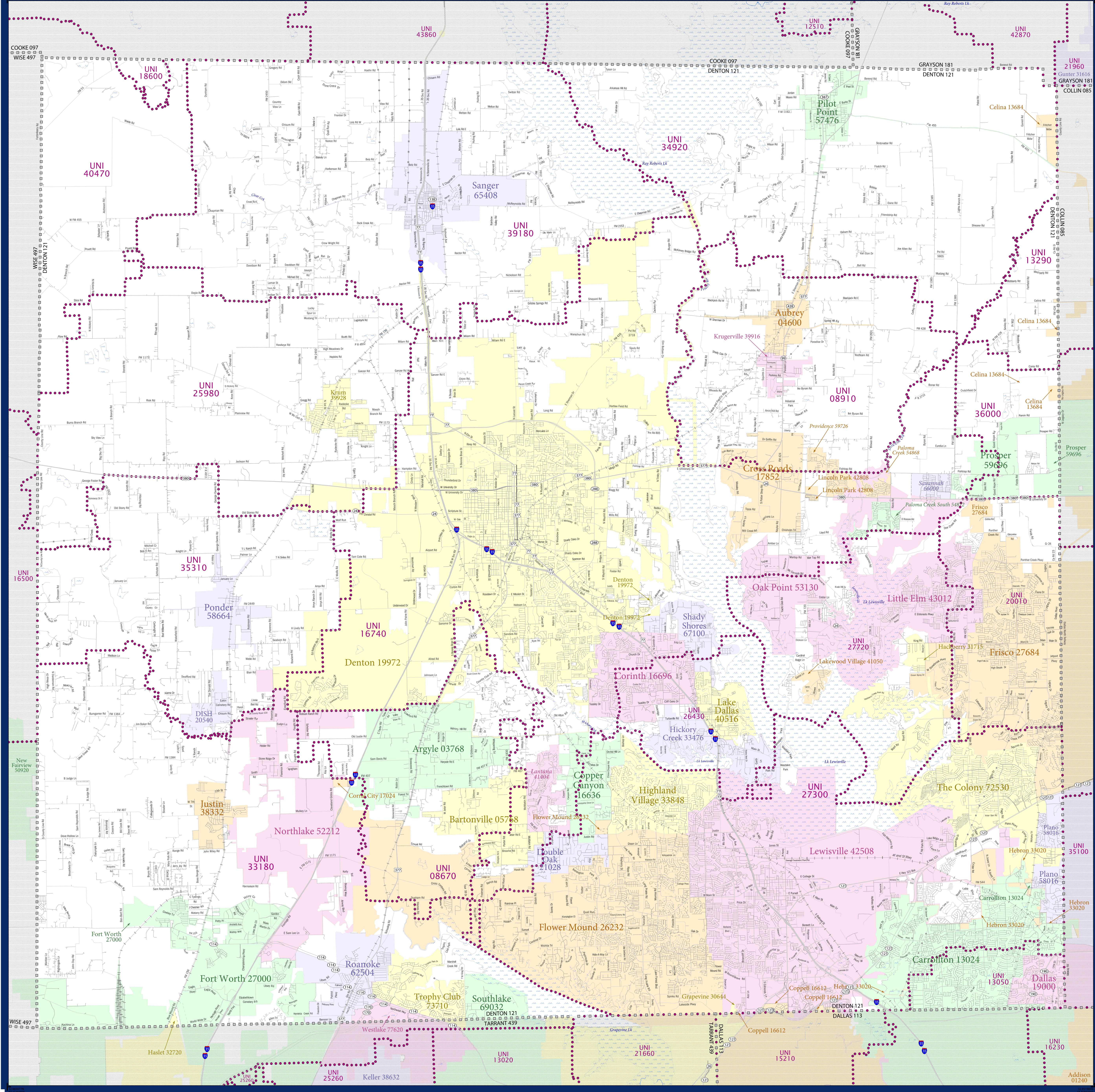


# SCHOOL DISTRICT REFERENCE MAP (2010 CENSUS): Denton County, TX



### LEGEND

SYMBOL DESCRIPTION	SYMBOL	SYMBOL	SYMBOL
Federal American Indian Reservation	[Dotted pattern]	L'ANSE RES 1880	[Dotted pattern]
Off-Reservation Trust Land	[Dotted pattern]	T1880	[Dotted pattern]
State American Indian Reservation	[Dotted pattern]	Tama Res 4125	[Dotted pattern]
Alaska Native Regional Corporation	[Dotted pattern]	NANA ANRC 52120	[Dotted pattern]
State (or statistically equivalent entity)	[Dotted pattern]	NEW YORK 36	[Dotted pattern]
County (or statistically equivalent entity)	[Dotted pattern]	ERIE 029	[Dotted pattern]
Minor Civil Division (MCD) <sup>1,2</sup>	[Dotted pattern]	Bristol town 07485	[Dotted pattern]
Consolidated City	[Dotted pattern]	MILFORD 47500	[Dotted pattern]
Incorporated Place <sup>1,3</sup>	[Dotted pattern]	Davis 18100	[Dotted pattern]
Census Designated Place (CDP) <sup>3</sup>	[Dotted pattern]	Incline Village 35100	[Dotted pattern]
Unified School District	[Thick purple line]	UNI 03370	[Thick purple line]
Secondary School District	[Thick orange line]	SEC 99965	[Thick orange line]
Elementary School District	[Thick green line]	ELM 02220	[Thick green line]

DESCRIPTION	SYMBOL	DESCRIPTION	SYMBOL
Interstate	[Blue line with shield]	Water Body	[Blue wavy line]
U.S. Highway	[Blue line with shield]	Swamp or Marsh	[Blue wavy line]
State Highway	[Blue line with shield]	Glacier	[Blue wavy line]
Other Road	[Grey line]	Military	[Blue wavy line]
4WD Trail, Stamen, Alley, Walkway, or Ferry	[Grey line]	National or State Park, Forest, or Recreation Area	[Blue wavy line]
Railroad	[Black line with cross-ticks]	Inset Area	[Blue wavy line]
Pipeline or Power Line	[Black line with cross-ticks]	Outside Subject Area	[Blue wavy line]
Ridge or Fence	[Black line with cross-ticks]		
Property Line	[Black line with cross-ticks]		
Nonvisible Boundary or Feature Not Elsewhere Classified	[Black line with cross-ticks]		

Where state, county, and/or MCD boundaries coincide, the map shows the boundary symbol for only the highest-ranking of these boundaries.

1 A "\*" following an MCD name denotes a false MCD. A "\*" following a place name indicates that a false MCD exists with the same name and FIPS code as the place; the false MCD label is not shown.

2 MCD boundaries are shown in the following states in which MCDs have functioning governments: Connecticut, Maine, Massachusetts, Michigan, Minnesota, New Hampshire, New Jersey, New York, Pennsylvania, Rhode Island, Vermont, and Wisconsin.

3 Place label color correlates to the place fill color.

### SCHOOL DISTRICTS WITHIN COUNTY

UNI	NAME
UNI 08910	Argyle Independent School District
UNI 13290	Aubrey Independent School District
UNI 18740	Carrollton-Farmers Branch Independent School District
UNI 18600	Celina Independent School District
UNI 20010	Denton Independent School District
UNI 25980	Era Independent School District
UNI 26430	Frisco Independent School District
UNI 27300	Krum Independent School District
UNI 27200	Lake Dallas Independent School District
UNI 27700	Lakeview Independent School District
UNI 31180	Little Elm Independent School District
UNI 34920	Northwest Independent School District
UNI 35310	Pilot Point Independent School District
UNI 36000	Ponder Independent School District
UNI 39180	Prosper Independent School District
UNI 40470	Sanger Independent School District
UNI 40470	Stell Independent School District



All legal boundaries and names are as of January 1, 2010. The boundaries shown on this map are for census Bureau statistical data collection and tabulation purposes only; their depiction and designation for statistical purposes does not constitute a determination of jurisdictional authority or rights of ownership or entitlement.

Geographic Vintage: 2010 Census (reference date: January 1, 2010)  
 Data Source: U.S. Census Bureau's MA7/TIGER database (TAB000148)  
 Map Created by Geography Division: December 10, 2010

Projection: Albers Equal Area Conic  
 Datum: NAD83  
 Spheroid: GRS 80  
 1st Standard Parallel: 27 36 51  
 2nd Standard Parallel: 34 43 24  
 Central Meridian: -100 04 35  
 Latitude of Projection's Origin: 25 50 13  
 False Easting: 0  
 False Northing: 0

Scale: 1:247,711

USCENSUSBUREAU

PARENT SHEET 1  
 Total Sheets: 1  
 Index Sheets: 0  
 Parent Sheets: 1  
 Inset Sheets: 0

NAME: Denton County (121)  
 ENTITY TYPE: County or statistically equivalent entity  
 ST: Texas (48)

2010 SD MAP (PARENT)  
 20040412 001