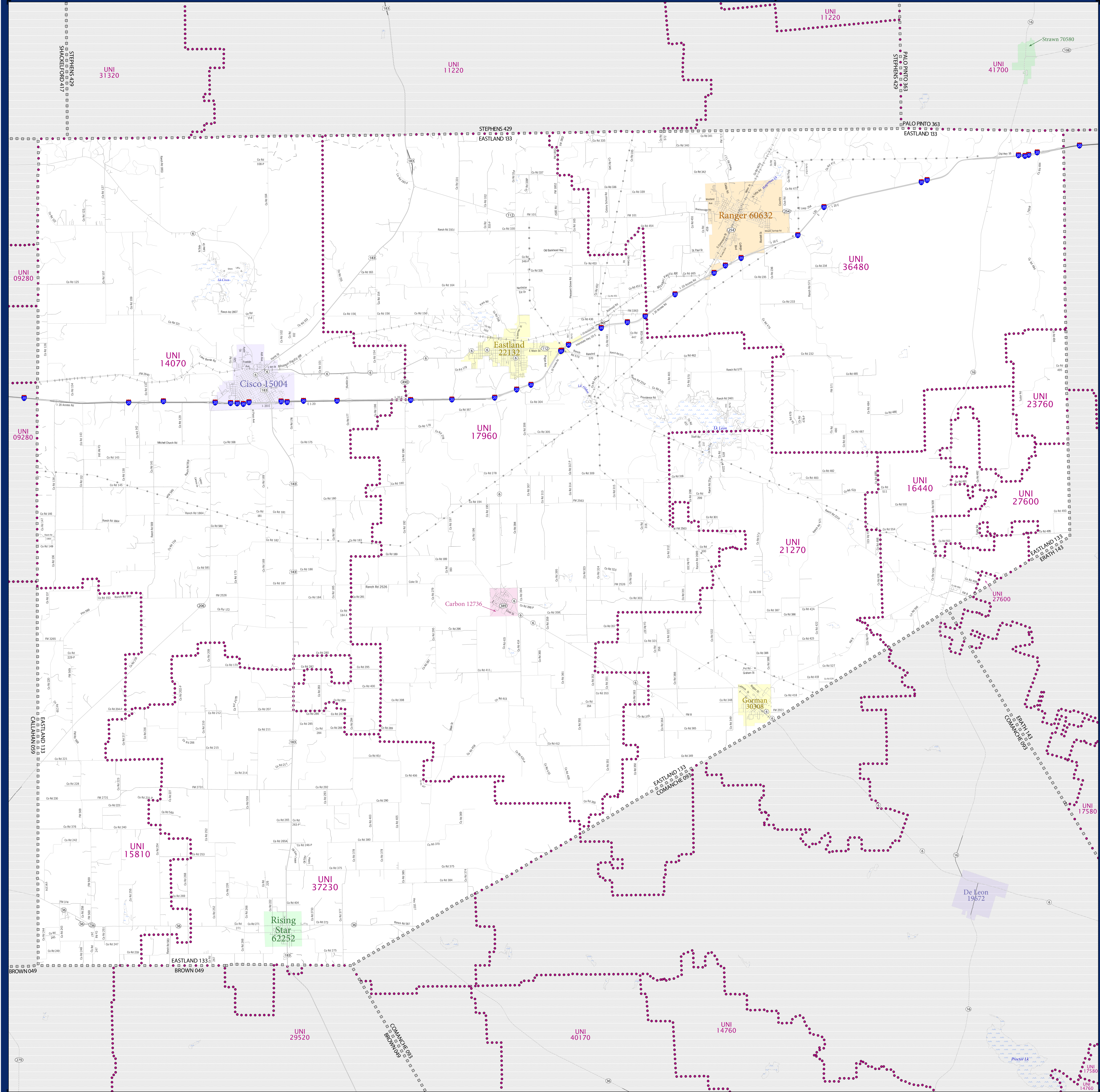


SCHOOL DISTRICT REFERENCE MAP (2010 CENSUS): Eastland County, TX



SYMBOL DESCRIPTION		LEGEND	
Federal American Indian Reservation	[Symbol]	L'ANSE RES 1880	
Off-Reservation Trust Land	[Symbol]	T1880	
State American Indian Reservation	[Symbol]	Tama Res 4125	
Alaska Native Regional Corporation	[Symbol]	NANA ANRC 52120	
State (or statistically equivalent entity)	[Symbol]	NEW YORK 36	
County (or statistically equivalent entity)	[Symbol]	ERIE 029	
Minor Civil Division (MCD) ^{1,2}	[Symbol]	Bristol town 07485	
Consolidated City	[Symbol]	MILFORD 47500	
Incorporated Place ^{1,3}	[Symbol]	Davis 18100	
Census Designated Place (CDP) ³	[Symbol]	Incline Village 35100	
Unified School District	[Symbol]	UNI 03370	
Secondary School District	[Symbol]	SEC 99965	
Elementary School District	[Symbol]	ELM 02220	
Interstate	[Symbol]	Water Body	[Symbol]
U.S. Highway	[Symbol]	Swamp or Marsh	[Symbol]
State Highway	[Symbol]	Glacier	[Symbol]
Other Road	[Symbol]	Military	[Symbol]
4WD Trail, Stamen, Alley, Walkway, or Ferry	[Symbol]	National or State Park, Forest, or Reservation Area	[Symbol]
Railroad	[Symbol]	Inset Area	[Symbol]
Pipeline or Power Line	[Symbol]	Outside Subject Area	[Symbol]
Ridge or Fence	[Symbol]		
Property Line	[Symbol]		
Nonvisible Boundary or Feature Not Elsewhere Classified	[Symbol]		

Where state, county, and/or MCD boundaries coincide, the map shows the boundary symbol for only the highest-ranking of these boundaries.

1 A "*" following an MCD name denotes a false MCD. A "*" following a place name indicates that a false MCD exists with the same name and FIPS code as the place; the false MCD label is not shown.

2 MCD boundaries are shown in the following states in which MCDs have functioning governments: Connecticut, Maine, Massachusetts, Michigan, Minnesota, New Hampshire, New Jersey, New York, Pennsylvania, Rhode Island, Vermont, and Wisconsin.

3 Place label color correlates to the place fill color.

SCHOOL DISTRICTS WITHIN COUNTY		
TYPE	CODE	NAME
UNI	18010	Cross Plains Independent School District
UNI	18810	Cross Plains Independent School District
UNI	16440	DeLeon Independent School District
UNI	17960	Eastland Independent School District
UNI	21270	Gorman Independent School District
UNI	23760	Huckabay Independent School District
UNI	27600	Lingleville Independent School District
UNI	36480	Ranger Independent School District
UNI	37230	Rising Star Independent School District



All legal boundaries and names are as of January 1, 2010. The boundaries shown on this map are for Census Bureau statistical data collection and tabulation purposes only; their depiction and designation for statistical purposes does not constitute a determination of jurisdictional authority or rights of ownership or entitlement.

Geographic Vintage: 2010 Census (reference date: January 1, 2010)
 Data Source: U.S. Census Bureau's MAINTIGR database (TAB100148)
 Map Created by Geography Division: November 29, 2010

U.S. DEPARTMENT OF COMMERCE Economics and Statistics Administration U.S. Census Bureau

Projection: Albers Equal Area Conic
 Datum: NAD83
 Spheroid: GRS 80
 1st Standard Parallel: 27 36 51
 2nd Standard Parallel: 34 43 24
 Central Meridian: -100 04 35
 Latitude of Projection's Origin: 25 50 13
 False Easting: 0
 False Northing: 0

The plotted map scale is 1:32727

0 2 4 6 8 10 kilometers
 0 2 4 6 8 10 miles

U.S. CENSUS BUREAU

PARENT SHEET 1
 Total Sheets: 1
 Index Sheets: 0
 Parent Sheets: 1
 Inset Sheets: 0

NAME: Eastland County (133)
 ENTITY TYPE: County or statistically equivalent entity
 ST: Texas (48)