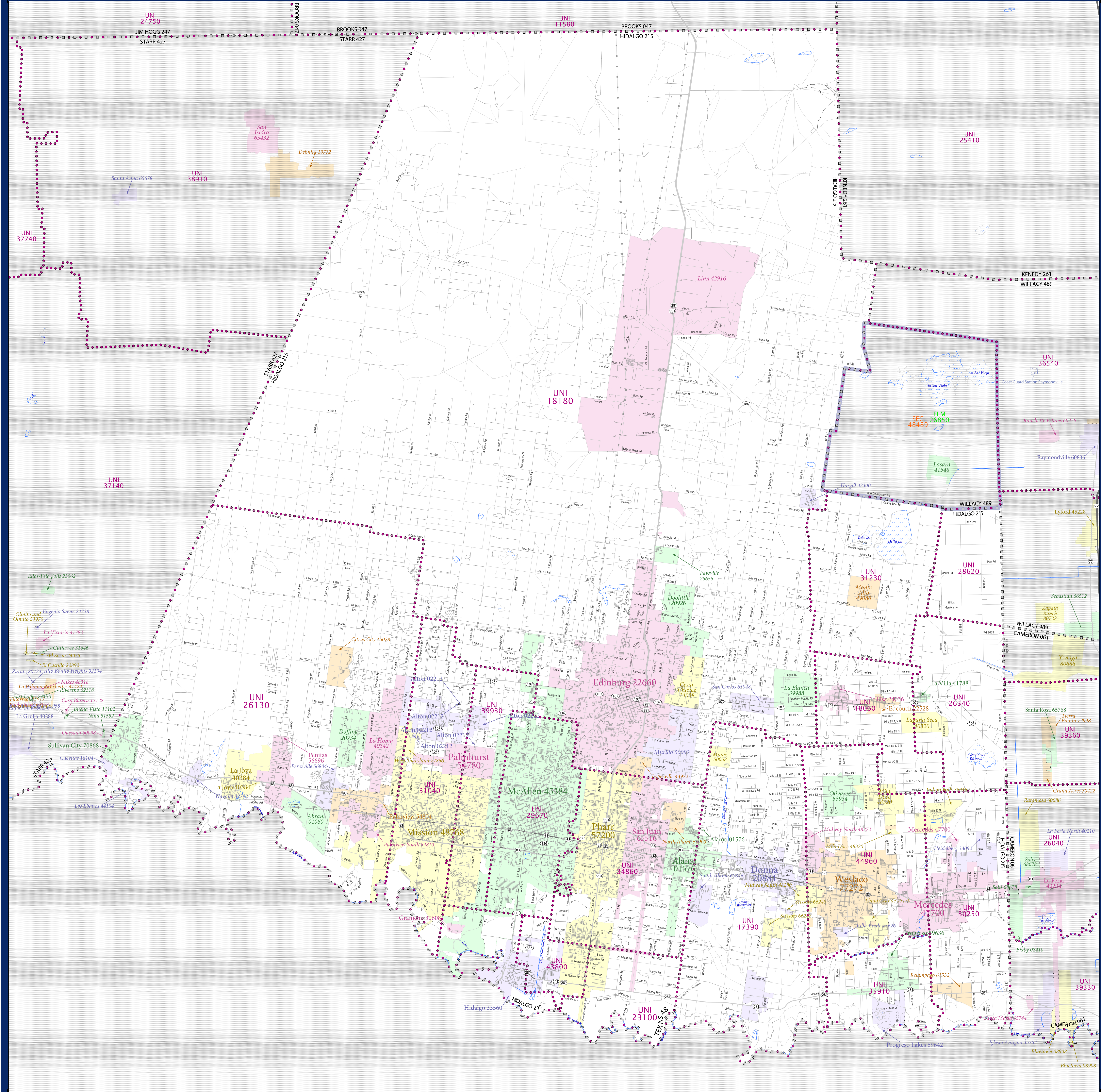


SCHOOL DISTRICT REFERENCE MAP (2010 CENSUS): Hidalgo County, TX



SYMBOL DESCRIPTION		LEGEND	
Federal American Indian Reservation	[Symbol]	L'ANSE RES 1880	[Symbol]
Off-Reservation Trust Land	[Symbol]	T1880	[Symbol]
State American Indian Reservation	[Symbol]	Tama Res 4125	[Symbol]
Alaska Native Regional Corporation	[Symbol]	NANA ANRC 52120	[Symbol]
State (or statistically equivalent entity)	[Symbol]	NEW YORK 36	[Symbol]
County (or statistically equivalent entity)	[Symbol]	ERIE 029	[Symbol]
Minor Civil Division (MCD) ^{1,2}	[Symbol]	Bristol town 07485	[Symbol]
Consolidated City	[Symbol]	MILFORD 47500	[Symbol]
Incorporated Place ³	[Symbol]	Davis 18100	[Symbol]
Census Designated Place (CDP) ³	[Symbol]	Incline Village 35100	[Symbol]
Unified School District	[Symbol]	UNI 03370	[Symbol]
Secondary School District	[Symbol]	SEC 99965	[Symbol]
Elementary School District	[Symbol]	ELM 02220	[Symbol]

Where state, county, and/or MCD boundaries coincide, the map shows the boundary symbol for only the highest-ranking of these boundaries.

1 A "*" following an MCD name denotes a false MCD. A "*" following a place name indicates that a false MCD exists with the same name and FIPS code as the place; the false MCD label is not shown.

2 MCD boundaries are shown in the following states in which MCDs have functioning governments: Connecticut, Maine, Massachusetts, Michigan, Minnesota, New Hampshire, New Jersey, New York, Pennsylvania, Rhode Island, Vermont, and Wisconsin.

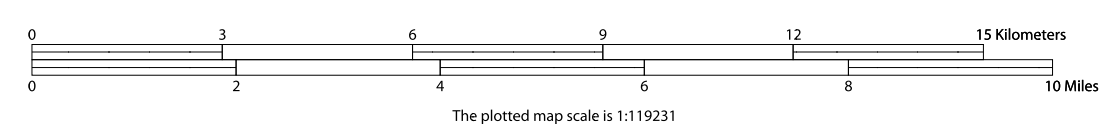
3 Place label color correlates to the place fill color.

TYPE	CODE	NAME
UNI	17700	Edinburg Independent School District
UNI	18060	Edinburg Consolidated Independent School District
UNI	21100	Hidalgo Independent School District
UNI	26130	La Joya Independent School District
UNI	26340	La Villa Independent School District
UNI	26620	Lyford Consolidated Independent School District
UNI	29670	McAllen Independent School District
UNI	30250	Mercedes Independent School District
UNI	31040	Mission Consolidated Independent School District
UNI	31230	Monte Alto Independent School District
UNI	34860	Pharr-San Juan-Alamo Independent School District
UNI	35910	Progress Independent School District
UNI	39930	Sharyland Independent School District
UNI	43800	Valley View Independent School District
UNI	44960	Weslaco Independent School District

All legal boundaries and names are as of January 1, 2010. The boundaries shown on this map are for Census Bureau's statistical data collection and tabulation purposes only; their depiction and designation for statistical purposes does not constitute a determination of jurisdictional authority or rights of ownership or entitlement.

Geographic: Vintage: 2010 Census (reference date: January 1, 2010)
 Data Source: U.S. Census Bureau's MAINTIGED database (TAB00148)
 Map Created by Geography Division: January 04, 2011

Projection: Albers Equal Area Conic
 Datum: NAD83
 Spheroid: GRS 80
 1st Standard Parallel: 27 36 51
 2nd Standard Parallel: 34 43 24
 Central Meridian: -100 04 35
 Latitude of Projection's Origin: 25 50 13
 False Easting: 0
 False Northing: 0



PARENT SHEET 1
 Total Sheets: 1
 Index Sheets: 0
 Parent Sheets: 0
 Inset Sheets: 0

NAME: Hidalgo County (215)
 ENTITY TYPE: County or statistically equivalent entity
 ST: Texas (48)

