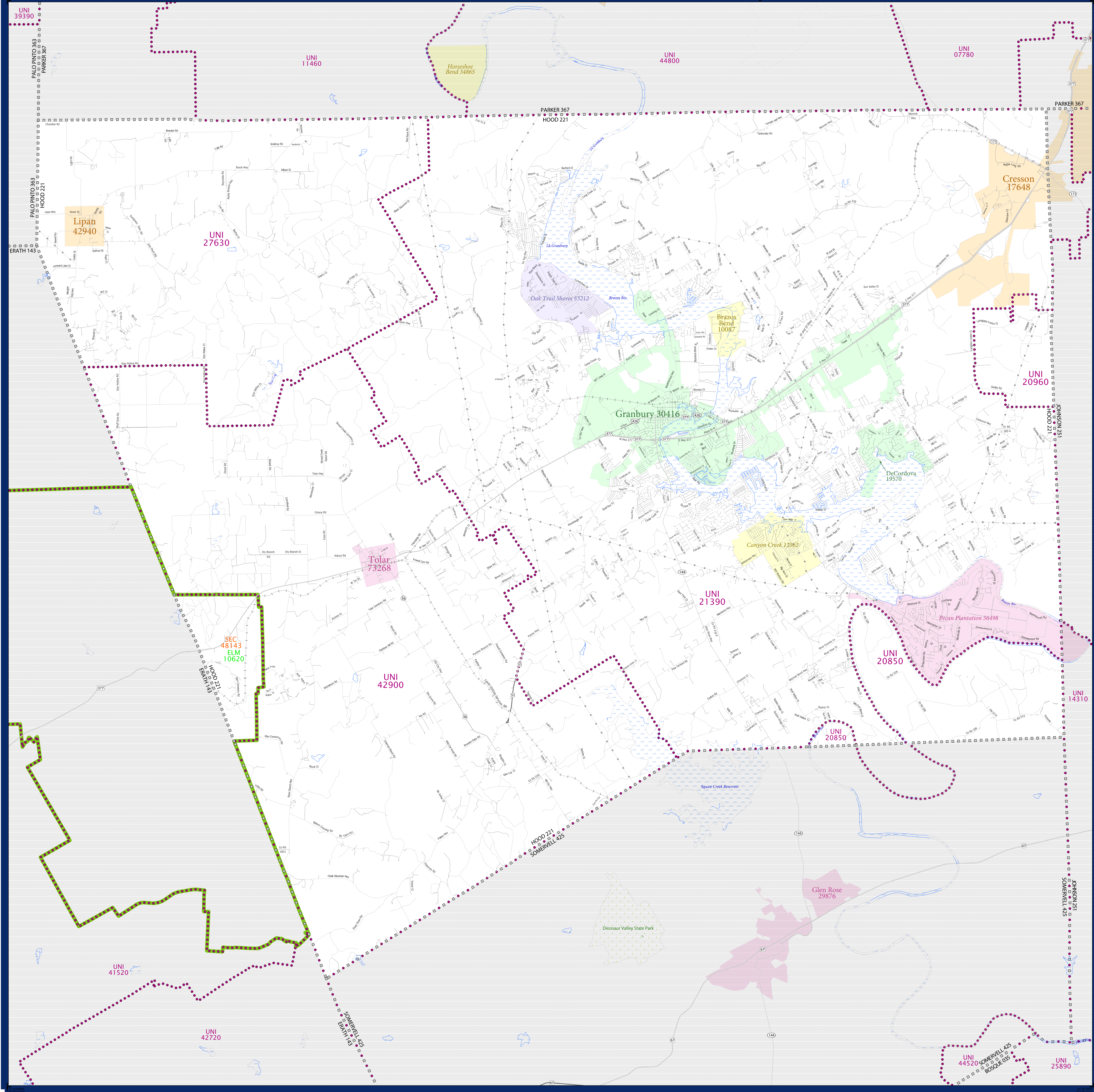


SCHOOL DISTRICT REFERENCE MAP (2010 CENSUS): Hood County, TX



LEGEND

SYMBOL DESCRIPTION	SYMBOL	SYMBOL DESCRIPTION	SYMBOL
Federal American Indian Reservation	[Dotted Pattern]	Water Body	[Blue Fill]
Off-Reservation Trust Land	[Dotted Pattern]	Swamp or Marsh	[Light Blue Fill]
State American Indian Reservation	[Dotted Pattern]	Glacier	[Light Blue Fill]
Alaska Native Regional Corporation	[Dotted Pattern]	Military	[Light Blue Fill]
State (or statistically equivalent entity)	[Dotted Pattern]	National or State Park, Forest, or Reservation Area	[Light Blue Fill]
County (or statistically equivalent entity)	[Dotted Pattern]	Inset Area	[Light Blue Fill]
Minor Civil Division (MCD) ^{1,2}	[Dotted Pattern]	Outside Subject Area	[Light Blue Fill]
Consolidated City	[Dotted Pattern]		
Incorporated Place ^{1,3}	[Dotted Pattern]		
Census Designated Place (CDP) ³	[Dotted Pattern]		
Unified School District	[Purple Dotted Line]		
Secondary School District	[Orange Dotted Line]		
Elementary School District	[Green Dotted Line]		

DESCRIPTION	SYMBOL	DESCRIPTION	SYMBOL
Interstate	[Thick Blue Line]	Pleasant Lake	[Blue Line]
U.S. Highway	[Thick Grey Line]	Oakfronches Swamp	[Blue Line]
State Highway	[Thin Grey Line]	Bering Glacier	[Blue Line]
Other Road	[Thin Grey Line]	Fort Belvoir	[Blue Line]
4WD Trail, Stamen, Alley, Walkway, or Ferry	[Thin Grey Line]	Yosemite NP	[Blue Line]
Railroad	[Thin Grey Line]		
Pipeline or Power Line	[Thin Grey Line]		
Ridge or Fence	[Thin Grey Line]		
Property Line	[Thin Grey Line]		
Nonvisible Boundary or Feature Not Elsewhere Classified	[Thin Grey Line]		

Where state, county, and/or MCD boundaries coincide, the map shows the boundary symbol for only the highest-ranking of these boundaries.

1 A "*" following an MCD name denotes a false MCD. A "*" following a place name indicates that a false MCD exists with the same name and FIPS code as the place; the false MCD label is not shown.

2 MCD boundaries are shown in the following states in which MCDs have functioning governments: Connecticut, Maine, Massachusetts, Michigan, Minnesota, New Hampshire, New Jersey, New York, Pennsylvania, Rhode Island, Vermont, and Wisconsin.

3 Place label color correlates to the place fill color.

SCHOOL DISTRICTS WITHIN COUNTY

TYPE	CODE	NAME
ELM	10620	Bluff Dale Independent School District
SEC	48143	Stephenville Independent School District (9-12) in Bluff Dale
UNI	20850	Glen Rose Independent School District
UNI	20960	Godley Independent School District
UNI	21390	Granbury Independent School District
UNI	27630	Lipan Independent School District
UNI	42900	Tolar Independent School District



All legal boundaries and names are as of January 1, 2010. The boundaries shown on this map are for Census Bureau statistical data collection and tabulation purposes only; their depiction and designation for statistical purposes does not constitute a determination of jurisdictional authority or rights of ownership or entitlement.

Geographic Vintage: 2010 Census (reference date: January 1, 2010)
 Data Source: U.S. Census Bureau's MAINTIGR database (TAB100148)
 Map Created by Geography Division: November 29, 2010

U.S. DEPARTMENT OF COMMERCE Economics and Statistics Administration U.S. Census Bureau

Projection: Albers Equal Area Conic
 Datum: NAD 83
 Spheroid: GRS 80
 1st Standard Parallel: 27 36 51
 2nd Standard Parallel: 34 43 24
 Central Meridian: -100 04 35
 Latitude of Projection's Origin: 25 50 13
 False Easting: 0
 False Northing: 0

The plotted map scale is 1:62106

U.S. CENSUS BUREAU

PARENT SHEET 1
 Total Sheets: 1
 Index Sheets: 0
 Parent Sheets: 0
 Inset Sheets: 0