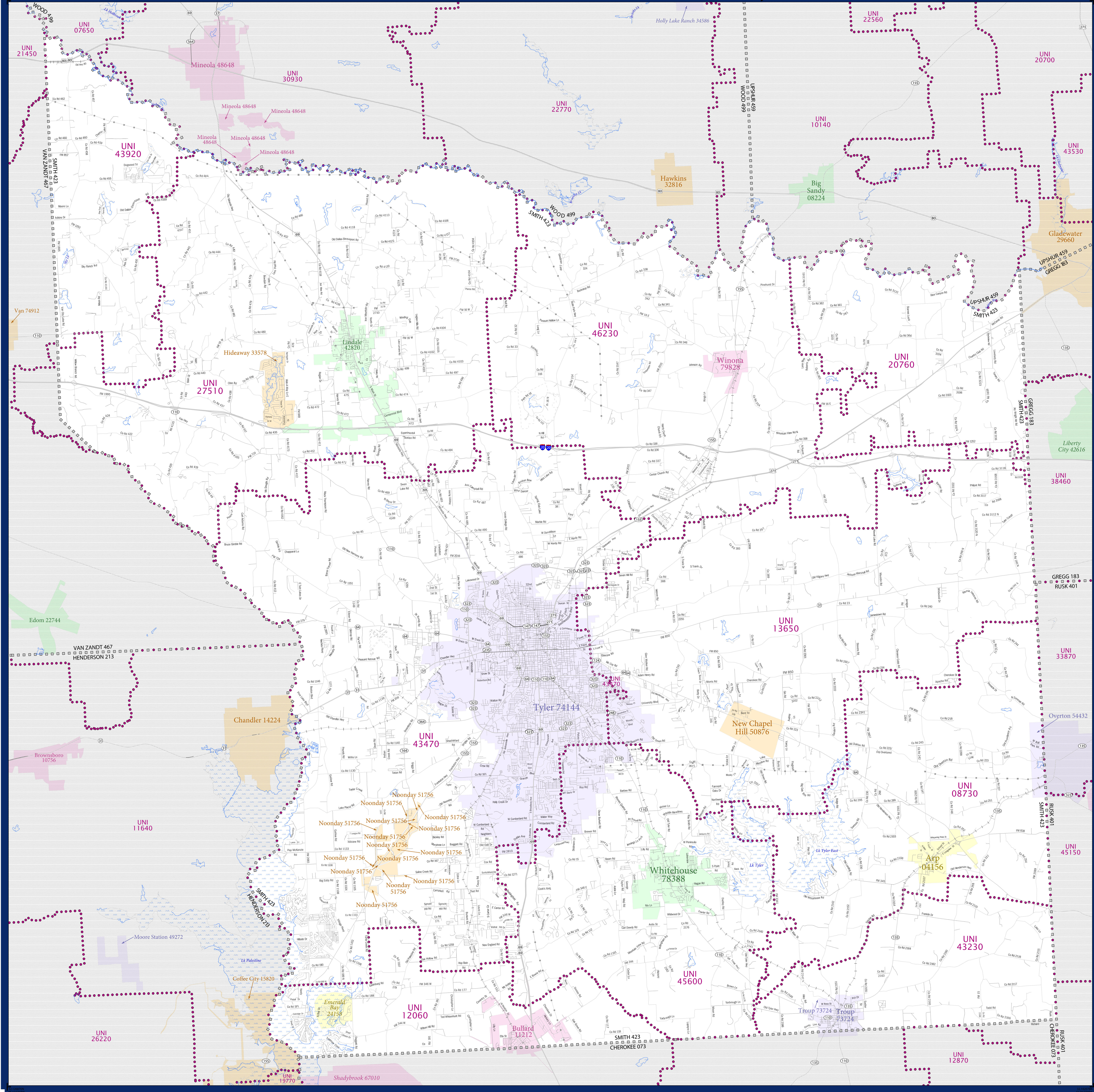


SCHOOL DISTRICT REFERENCE MAP (2010 CENSUS): Smith County, TX



LEGEND

SYMBOL DESCRIPTION	SYMBOL	SYMBOL DESCRIPTION	SYMBOL
Federal American Indian Reservation	[Dotted pattern]	Water Body	[Blue wavy line]
Off-Reservation Trust Land	[Dotted pattern]	Swamp or Marsh	[Blue wavy line]
State American Indian Reservation	[Dotted pattern]	Glacier	[Blue wavy line]
Alaska Native Regional Corporation	[Dotted pattern]	Military	[Blue wavy line]
State (or statistically equivalent entity)	[Dotted pattern]	National or State Park, Forest, or Recreation Area	[Blue wavy line]
County (or statistically equivalent entity)	[Dotted pattern]	Inset Area	[Blue wavy line]
Minor Civil Division (MCD) ^{1,2}	[Dotted pattern]	Outside Subject Area	[Blue wavy line]
Consolidated City	[Dotted pattern]		
Incorporated Place ³	[Dotted pattern]		
Census Designated Place (CDP) ³	[Dotted pattern]		
Unified School District	[Dotted pattern]		
Secondary School District	[Dotted pattern]		
Elementary School District	[Dotted pattern]		

Where state, county, and/or MCD boundaries coincide, the map shows the boundary symbol for only the highest-ranking of these boundaries.

1 A "*" following an MCD name denotes a false MCD. A "*" following a place name indicates that a false MCD exists with the same name and FIPS code as the place; the false MCD label is not shown.

2 MCD boundaries are shown in the following states in which MCDs have functioning governments: Connecticut, Maine, Massachusetts, Michigan, Minnesota, New Hampshire, New Jersey, New York, Pennsylvania, Rhode Island, Vermont, and Wisconsin.

3 Place label color correlates to the place fill color.

SCHOOL DISTRICTS WITHIN COUNTY

TYPE	CODE	NAME
UNI	08750	Arp Independent School District
UNI	12060	Bullard Independent School District
UNI	13650	Chapel Hill Independent School District
UNI	20760	Gladewater Independent School District
UNI	27510	Lindale Independent School District
UNI	43230	Troup Independent School District
UNI	43470	Tyler Independent School District
UNI	43920	Van Independent School District
UNI	45600	Whitehouse Independent School District
UNI	46230	Winona Independent School District



All legal boundaries and names are as of January 1, 2010. The boundaries shown on this map are for Census Bureau statistical data collection and tabulation purposes only; their depiction and designation for statistical purposes does not constitute a determination of jurisdictional authority or rights of ownership or entitlement.

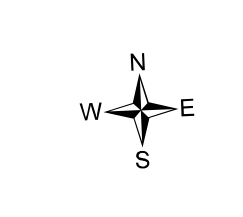
Geographic: Vintage: 2010 Census (reference date: January 1, 2010)
 Data Source: U.S. Census Bureau's MAINTIGR database (TAB100148)
 Map Created by Geography Division: November 29, 2010

U.S. DEPARTMENT OF COMMERCE Economics and Statistics Administration U.S. Census Bureau

Projection: Albers Equal Area Conic
 Datum: NAD83
 Spheroid: GRS 80
 1st Standard Parallel: 27 36 51
 2nd Standard Parallel: 34 43 24
 Central Meridian: -100 04 35
 Latitude of Projection's Origin: 25 50 13
 False Easting: 0
 False Northing: 0

Scale: 1:250,000
 The plotted map scale is 1:250,000

U.S. CENSUS BUREAU



PARENT SHEET 1
 Total Sheets: 1
 Index Sheets: 0
 Parent Sheets: 1
 Inset Sheets: 0

NAME: Smith County (423)
 ENTITY TYPE: County or statistically equivalent entity
 ST: Texas (48)