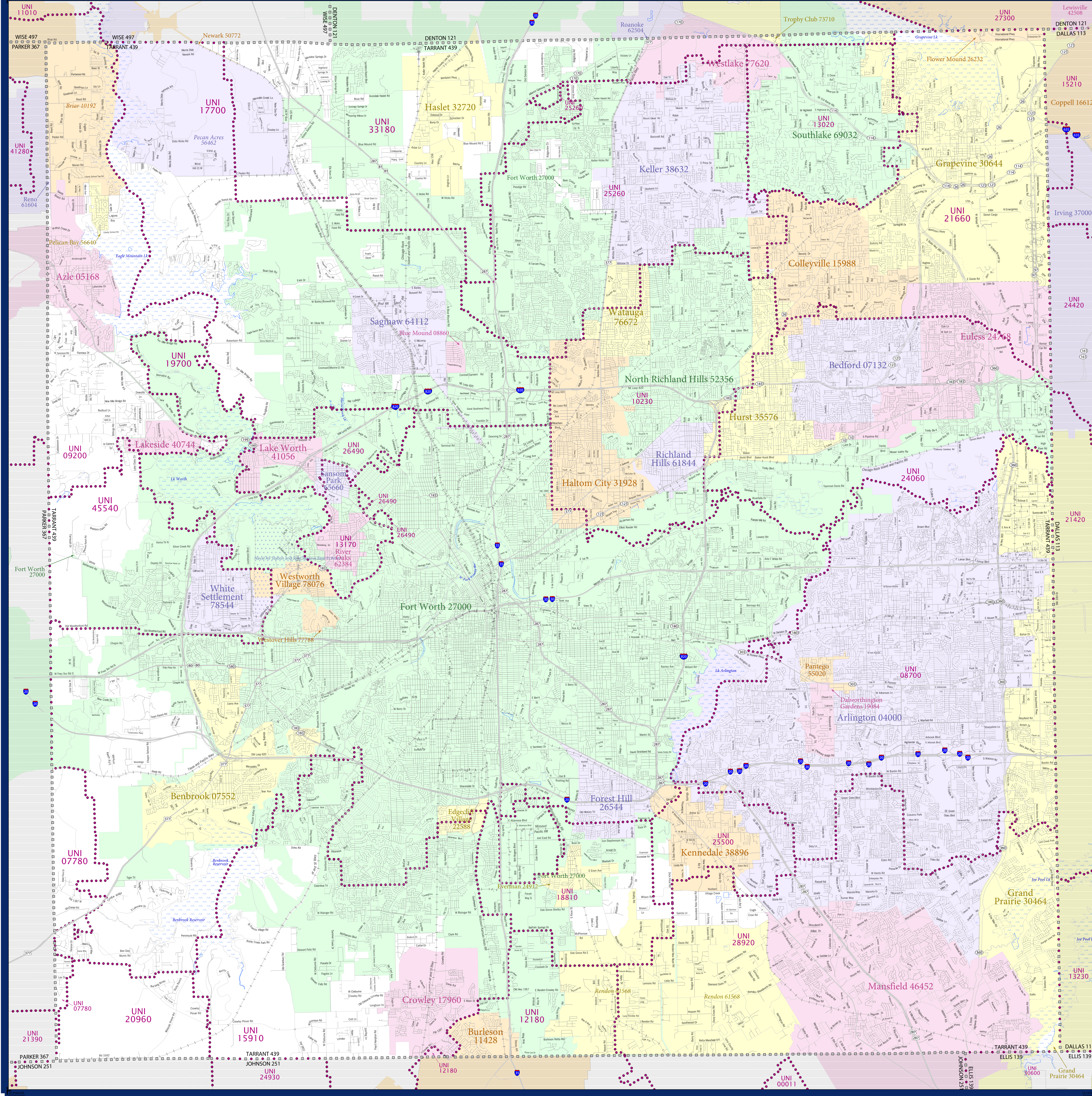


SCHOOL DISTRICT REFERENCE MAP (2010 CENSUS): Tarrant County, TX



LEGEND

SYMBOL DESCRIPTION	SYMBOL	SYMBOL DESCRIPTION	SYMBOL
Federal American Indian Reservation	[Dotted pattern]	Water Body	[Blue wavy line]
Off-Reservation Trust Land	[Dotted pattern]	Swamp or Marsh	[Blue wavy line]
State American Indian Reservation	[Dotted pattern]	Glacier	[Blue wavy line]
Alaska Native Regional Corporation	[Dotted pattern]	Military	[Blue wavy line]
State (or statistically equivalent entity)	[Dotted pattern]	National or State Park, Forest, or Reservation Area	[Blue wavy line]
County (or statistically equivalent entity)	[Dotted pattern]	Inset Area	[Blue wavy line]
Minor Civil Division (MCD) ^{1,2}	[Dotted pattern]	Outside Subject Area	[Blue wavy line]
Consolidated City	[Dotted pattern]		
Incorporated Place ^{1,3}	[Dotted pattern]		
Census Designated Place (CDP) ¹	[Dotted pattern]		
Unified School District	[Dotted pattern]		
Secondary School District	[Dotted pattern]		
Elementary School District	[Dotted pattern]		

Where state, county, and/or MCD boundaries coincide, the map shows the boundary symbol for only the highest-ranking of these boundaries.

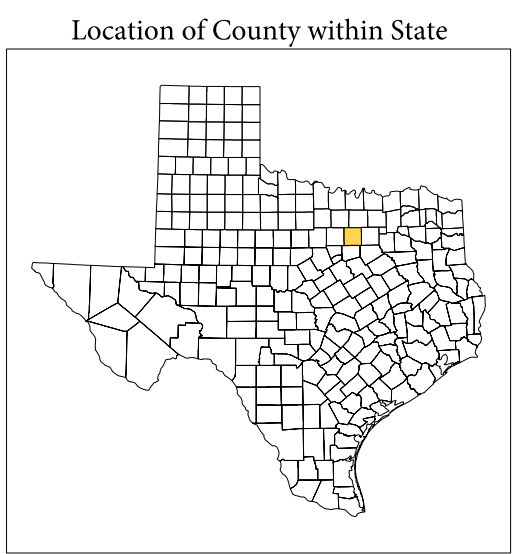
1 A "*" following an MCD name denotes a false MCD. A "*" following a place name indicates that a false MCD exists with the same name and FIPS code as the place; the false MCD label is not shown.

2 MCD boundaries are shown in the following states in which MCDs have functioning governments: Connecticut, Maine, Massachusetts, Michigan, Minnesota, New Hampshire, New Jersey, New York, Pennsylvania, Rhode Island, Vermont, and Wisconsin.

3 Place label color correlates to the place fill color.

SCHOOL DISTRICTS WITHIN COUNTY

UNI	NAME
UNI 03370	Aledo Independent School District
UNI 08700	Arlington Independent School District
UNI 09200	Azle Independent School District
UNI 10230	Birdville Independent School District
UNI 12180	Burleson Independent School District
UNI 13020	Carroll Independent School District
UNI 13170	Candleberry Independent School District
UNI 15910	Crowley Independent School District
UNI 17700	Eagle Mountain-Saginaw Independent School District
UNI 18810	Everman Independent School District
UNI 19700	Fort Worth Independent School District
UNI 20900	Godley Independent School District
UNI 21660	Grapevine-Colleyville Independent School District
UNI 24060	Hurst-Euless-Bedford Independent School District
UNI 25260	Keller Independent School District
UNI 25500	Kennedale Independent School District
UNI 26480	Lake Worth Independent School District
UNI 28920	Mansfield Independent School District
UNI 31810	Northwest Independent School District
UNI 45440	White Settlement Independent School District



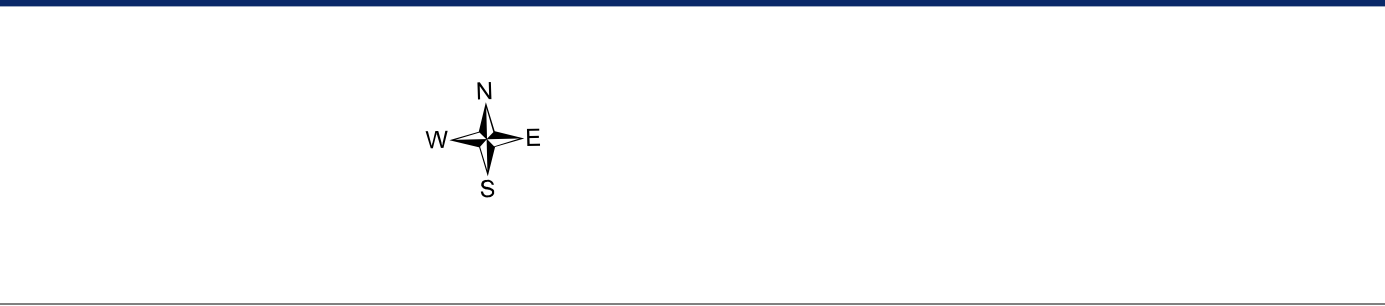
All legal boundaries and names are as of January 1, 2010. The boundaries shown on this map are for Census Bureau statistical data collection and tabulation purposes only; their depiction and designation for statistical purposes does not constitute a determination of jurisdictional authority or rights of ownership or entitlement.

Geographic Vintage: 2010 Census (reference date: January 1, 2010)
 Data Source: U.S. Census Bureau's MAINTIGR database (TAB00148)
 Map Created by Geography Division: January 04, 2011

U.S. DEPARTMENT OF COMMERCE Economics and Statistics Administration U.S. Census Bureau

Projection: Albers Equal Area Conic
 Datum: NAD83
 Spheroid: GRS 80
 1st Standard Parallel: 27 36 51
 2nd Standard Parallel: 34 43 24
 Central Meridian: -100 04 35
 Latitude of Projection's Origin: 25 50 13
 False Easting: 0
 False Northing: 0

The plotted map scale is 1:13172



PARENT SHEET 1
 Total Sheets: 1
 Index Sheets: 0
 Parent Sheets: 1
 Inset Sheets: 0

NAME: Tarrant County (439)
 ENTITY TYPE: County or statistically equivalent entity
 ST: Texas (48)

2010 SD MAP (PARENT)
 2014040001