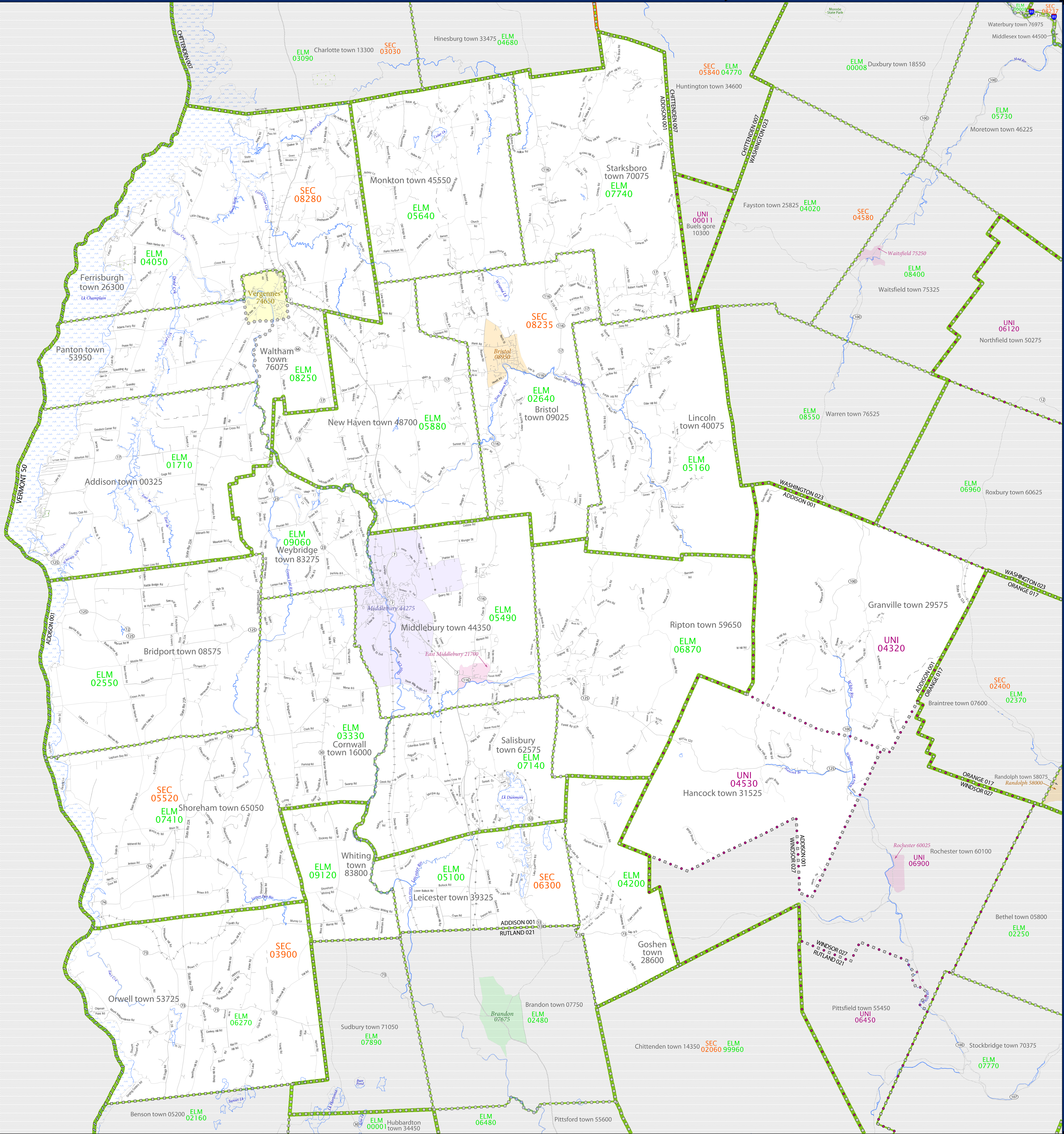


SCHOOL DISTRICT REFERENCE MAP (2010 CENSUS): Addison County, VT



LEGEND

SYMBOL DESCRIPTION	SYMBOL	SYMBOL DESCRIPTION	SYMBOL
Federal American Indian Reservation	[Dotted pattern]	Water Body	[Blue wavy lines]
Off-Reservation Trust Land	[Dotted pattern]	Swamp or Marsh	[Green wavy lines]
State American Indian Reservation	[Dotted pattern]	Glacier	[Blue wavy lines]
Alaska Native Regional Corporation	[Dotted pattern]	Military	[Blue wavy lines]
State (or statistically equivalent entity)	[Thick solid line]	National or State Park, Forest, or Recreation Area	[Green wavy lines]
County (or statistically equivalent entity)	[Thin solid line]	Inset Area	[Thin solid line]
Minor Civil Division (MCD) ^{1,2}	[Thin dashed line]	Outside Subject Area	[Thin solid line]
Consolidated City	[Thick dashed line]		
Incorporated Place ³	[Thick solid line]		
Census Designated Place (CDP) ³	[Thick solid line]		
Unified School District	[Purple outline]		
Secondary School District	[Orange outline]		
Elementary School District	[Green outline]		

Where state, county, and/or MCD boundaries coincide, the map shows the boundary symbol for only the highest-ranking of these boundaries.

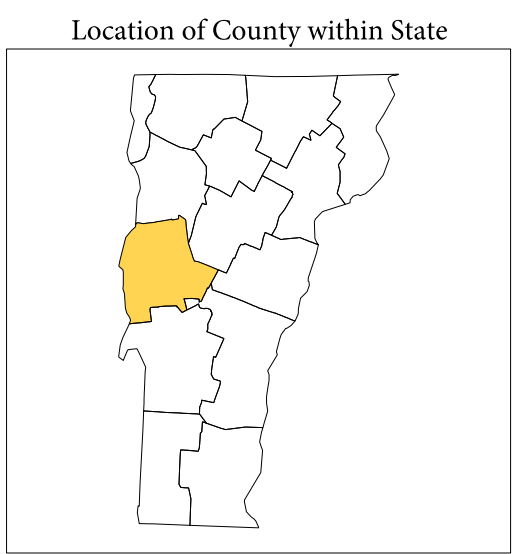
1 A "*" following an MCD name denotes a false MCD. A "*" following a place name indicates that a false MCD exists with the same name and FIPS code as the place; the false MCD label is not shown.

2 MCD boundaries are shown in the following states in which MCDs have functioning governments: Connecticut, Maine, Massachusetts, Michigan, Minnesota, New Hampshire, New Jersey, New York, Pennsylvania, Rhode Island, Vermont, and Wisconsin.

3 Place label color correlates to the place fill color.

SCHOOL DISTRICTS WITHIN COUNTY

TYPE	CODE	NAME
ELM	01710	Addison School District
ELM	02550	Bridport School District
ELM	02660	Bristol School District
ELM	03330	Cornwall School District
ELM	04050	Ferrisburgh School District
ELM	04200	Goshen School District
ELM	02100	Leicester School District
ELM	05160	Lincoln School District
ELM	05490	Middlebury School District
ELM	05640	Monkton School District
ELM	05880	New Haven School District
ELM	06270	Orwell School District
ELM	06810	Ripton School District
ELM	07140	Salisbury School District
ELM	07410	Shoreham School District
ELM	07740	Starksboro School District
ELM	08250	Vergennes Union High School District 44
ELM	09060	Weybridge School District
ELM	09120	Whiting School District
SEC	03900	Fair Haven Union High School District 16
SEC	05520	Middlebury Union High School District 3
SEC	06300	Otter Valley Union High School District 8
SEC	08215	Mount Abraham Union High School District 28
SEC	08280	Vergennes Union High School District 5
UNI	04320	Whiting School District
UNI	04530	Hancock School District
UNI	06450	Pittsford School District
UNI	06900	Rochester School District
UNI	06960	Roxbury School District
UNI	07770	Stockbridge School District
UNI	09330	Granville School District
UNI	09330	Granville School District
UNI	09330	Granville School District



All legal boundaries and names are as of January 1, 2010. The boundaries shown on this map are for Census Bureau statistical data collection and tabulation purposes only; their depiction and designation for statistical purposes does not constitute a determination of jurisdictional authority or rights of ownership or entitlement.

Geographic: Vintage: 2010 Census (reference date: January 1, 2010)
 Data Source: U.S. Census Bureau's MAINTIGR database (TAB100150)
 Map Created by Geography Division: November 29, 2010

U.S. DEPARTMENT OF COMMERCE Economics and Statistics Administration U.S. Census Bureau

Projection: Albers Equal Area Conic
 Datum: NAD 83
 Spheroid: GRS 80
 1st Standard Parallel: 43 06 28
 2nd Standard Parallel: 44 37 57
 Central Meridian: -72 27 05
 Latitude of Projection's Origin: 42 43 36
 False Easting: 0
 False Northing: 0

The plotted map scale is 1:80000

USCENSUSBUREAU

PARENT SHEET 1
 Total Sheets: 1
 Index Sheets: 0
 Parent Sheets: 1
 Inset Sheets: 0

NAME: Addison County (001)
 ENTITY TYPE: County or statistically equivalent entity
 ST: Vermont (50)

2010 SD MAP (PARENT)
 2011/06/01