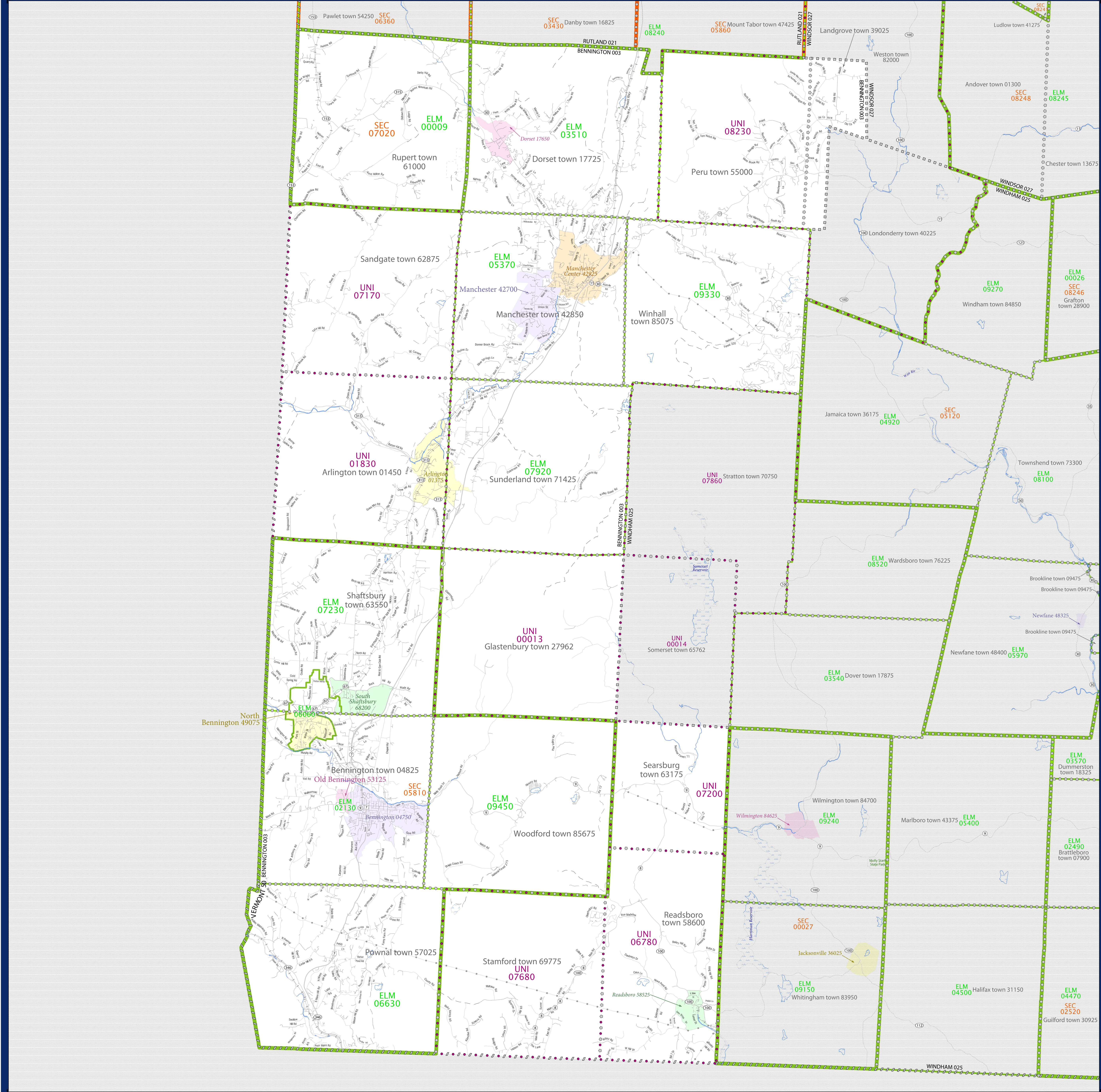


# SCHOOL DISTRICT REFERENCE MAP (2010 CENSUS): Bennington County, VT



### LEGEND

SYMBOL DESCRIPTION	SYMBOL	LABEL STYLE
Federal American Indian Reservation	[Dotted pattern]	L'ANSE RES 1880
Off-Reservation Trust Land	[Dotted pattern]	T1880
State American Indian Reservation	[Dotted pattern]	Tama Res 4125
Alaska Native Regional Corporation	[Dotted pattern]	NANA ANRC 52120
State (or statistically equivalent entity)	[Dotted pattern]	NEW YORK 36
County (or statistically equivalent entity)	[Dotted pattern]	ERIE 029
Minor Civil Division (MCD) <sup>1,2</sup>	[Dotted pattern]	Bristol town 07485
Consolidated City	[Dotted pattern]	MILFORD 47500
Incorporated Place <sup>3</sup>	[Dotted pattern]	Davis 18100
Census Designated Place (CDP) <sup>3</sup>	[Dotted pattern]	Incline Village 35100
Unified School District	[Purple outline]	UNI 03370
Secondary School District	[Orange outline]	SEC 99965
Elementary School District	[Green outline]	ELM 02220

DESCRIPTION	SYMBOL	DESCRIPTION	SYMBOL
Interstate	[Blue line with red shield]	Water Body	[Blue area]
U.S. Highway	[Black line with shield]	Swamp or Marsh	[Light blue area]
State Highway	[Black line with shield]	Glacier	[Light blue area]
Other Road	[Black line]	Military	[Blue area]
4WD Trail, Stamen, Alley, Walkway, or Ferry	[Black line]	National or State Park, Forest, or Reservation Area	[Green area]
Railroad	[Black line with cross-ticks]	Inset Area	[Grey area]
Pipeline or Power Line	[Black line with cross-ticks]	Outside Subject Area	[Grey area]
Ridge or Fence	[Black line with cross-ticks]		
Property Line	[Black line with cross-ticks]		
Nonvisible Boundary or Feature Not Elsewhere Classified	[Dashed line]		

Where state, county, and/or MCD boundaries coincide, the map shows the boundary symbol for only the highest-ranking of these boundaries.

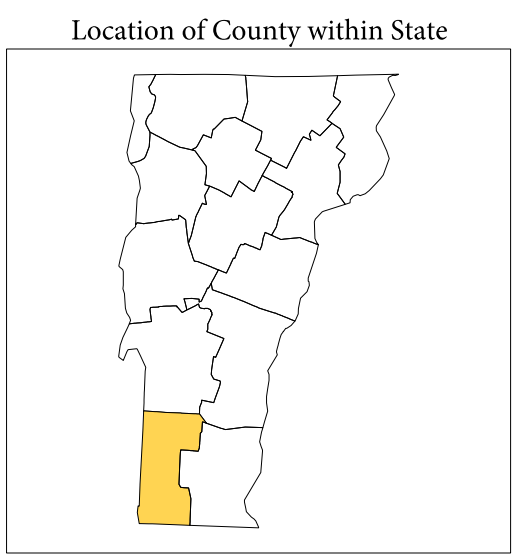
1 A "\*" following an MCD name denotes a false MCD. A "\*" following a place name indicates that a false MCD exists with the same name and FIPS code as the place; the false MCD label is not shown.

2 MCD boundaries are shown in the following states in which MCDs have functioning governments: Connecticut, Maine, Massachusetts, Michigan, Minnesota, New Hampshire, New Jersey, New York, Pennsylvania, Rhode Island, Vermont, and Wisconsin.

3 Place label color correlates to the place fill color.

### SCHOOL DISTRICTS WITHIN COUNTY

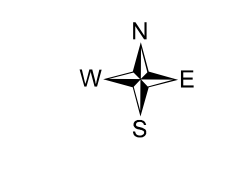
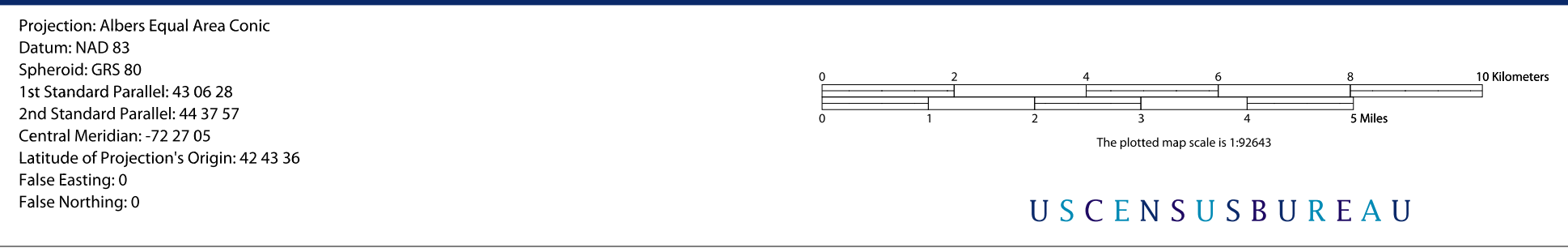
TYPE	CODE	NAME
ELM	00009	Manchester Community Union School District 47
ELM	02130	Bennington Incorporated School District
ELM	03510	Dorset School District
ELM	03370	Manchester School District
ELM	06600	North Bennington Incorporated School District
ELM	06630	Pownall School District
ELM	07230	Shaftsbury School District
ELM	07920	Sunderland School District
ELM	09330	Winhall School District
ELM	09450	Woodford School District
SEC	05810	Mount Anthony Union High School District 14
SEC	07020	Rupert School District
SEC	00013	Glastenbury School District
UNI	01830	Arlington School District
UNI	08230	Readsbury School District
UNI	07170	Sandgate School District
UNI	07200	Searsburg School District
UNI	07680	Stamford School District
UNI	08230	Flood Brook Union School District 20



All legal boundaries and names are as of January 1, 2010. The boundaries shown on this map are for Census Bureau statistical data collection and tabulation purposes only; their depiction and designation for statistical purposes does not constitute a determination of jurisdictional authority or rights of ownership or entitlement.

Geographic: Vintage: 2010 Census (reference date: January 1, 2010)  
 Data Source: U.S. Census Bureau's MA7/TIGER database (TAB100150)  
 Map Created by Geography Division: November 29, 2010

U.S. DEPARTMENT OF COMMERCE Economics and Statistics Administration U.S. Census Bureau



PARENT SHEET 1  
 Total Sheets: 1  
 Index Sheets: 0  
 Parent Sheets: 1  
 Inset Sheets: 0

NAME: Bennington County (003)  
 ENTITY TYPE: County or statistically equivalent entity  
 ST: Vermont (50)