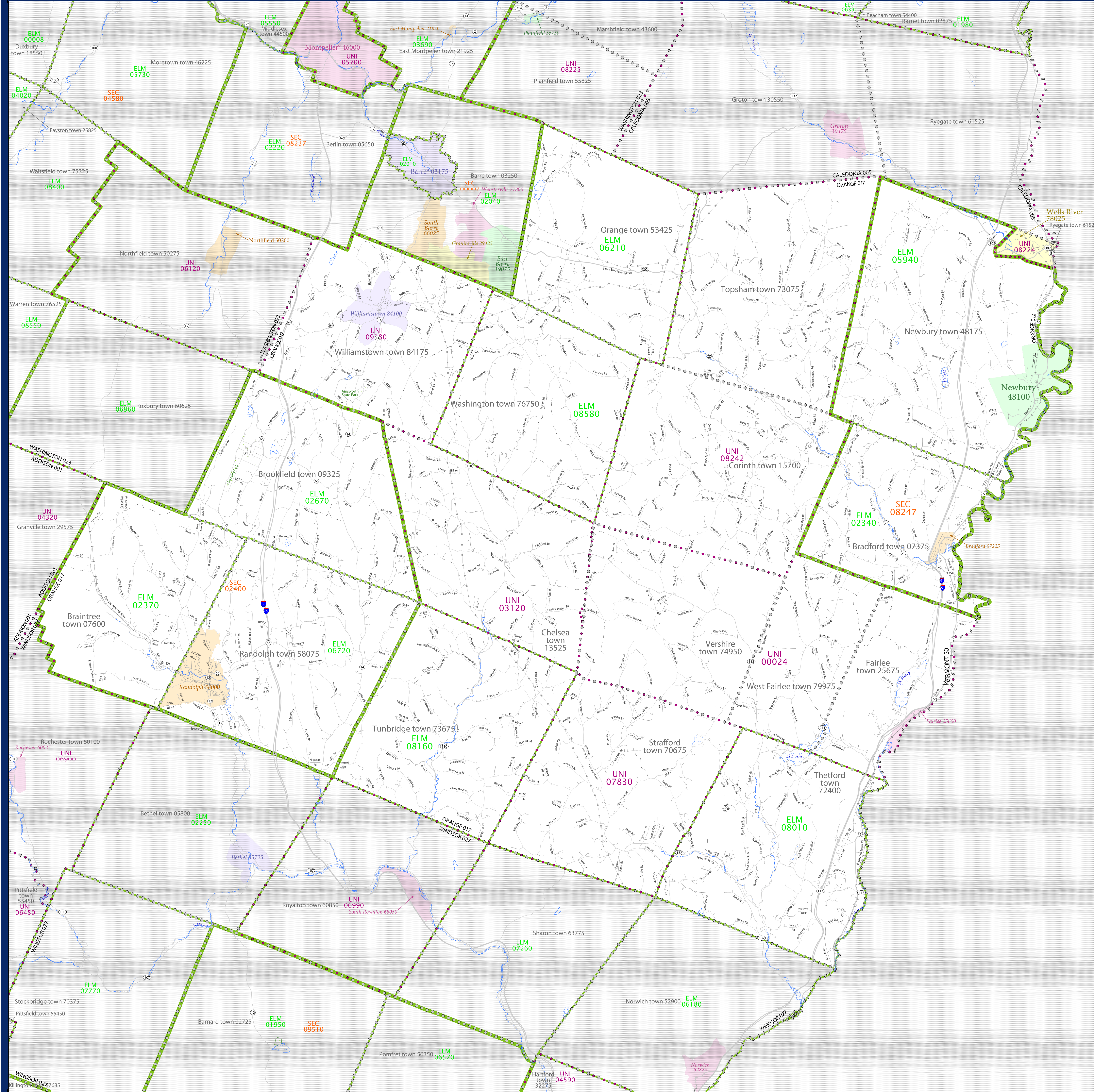


# SCHOOL DISTRICT REFERENCE MAP (2010 CENSUS): Orange County, VT



### LEGEND

SYMBOL DESCRIPTION	SYMBOL	LABEL STYLE
Federal American Indian Reservation	[Dotted pattern]	L'ANSE RES 1880
Off-Reservation Trust Land	[Dotted pattern]	T1880
State American Indian Reservation	[Dotted pattern]	Tama Res 4125
Alaska Native Regional Corporation	[Dotted pattern]	NANA ANRC 52120
State (or statistically equivalent entity)	[Dotted pattern]	NEW YORK 36
County (or statistically equivalent entity)	[Dotted pattern]	ERIE 029
Minor Civil Division (MCD) <sup>1,2</sup>	[Dotted pattern]	Bristol town 07485
Consolidated City	[Dotted pattern]	MILFORD 47500
Incorporated Place <sup>3</sup>	[Dotted pattern]	Davis 18100
Census Designated Place (CDP) <sup>3</sup>	[Dotted pattern]	Incline Village 35100
Unified School District	[Thick purple line]	UNI 03370
Secondary School District	[Thick orange line]	SEC 99965
Elementary School District	[Thick green line]	ELM 02220

DESCRIPTION	SYMBOL	DESCRIPTION	SYMBOL
Interstate	[Blue line with shield]	Water Body	[Blue wavy line]
U.S. Highway	[Blue line with shield]	Swamp or Marsh	[Blue wavy line]
State Highway	[Blue line with shield]	Glacier	[Blue wavy line]
Other Road	[Grey line]	Military	[Blue wavy line]
4WD Trail, Stoney, Alley, Walkway, or Ferry	[Grey line]	National or State Park, Forest, or Recreation Area	[Blue wavy line]
Railroad	[Black line with cross-ticks]	Inset Area	[Blue wavy line]
Pipeline or Power Line	[Black line with cross-ticks]	Outside Subject Area	[Blue wavy line]
Ridge or Fence	[Black line with cross-ticks]		
Property Line	[Black line with cross-ticks]		
Nonvisible Boundary or Feature Not Elsewhere Classified	[Black line with cross-ticks]		

Where state, county, and/or MCD boundaries coincide, the map shows the boundary symbol for only the highest-ranking of these boundaries.

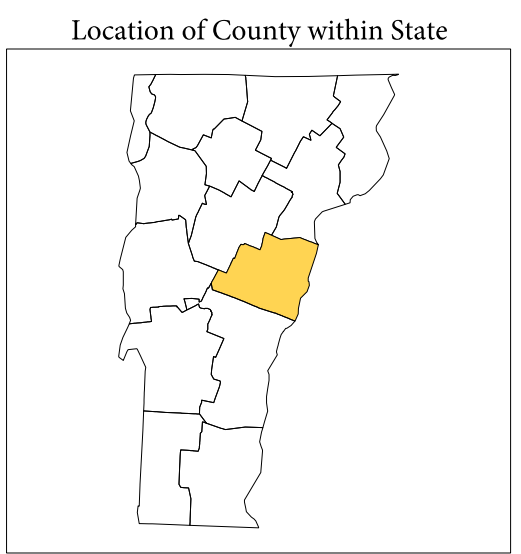
1 A "\*" following an MCD name denotes a false MCD. A "\*" following a place name indicates that a false MCD exists with the same name and FIPS code as the place; the false MCD label is not shown.

2 MCD boundaries are shown in the following states in which MCDs have functioning governments: Connecticut, Maine, Massachusetts, Michigan, Minnesota, New Hampshire, New Jersey, New York, Pennsylvania, Rhode Island, Vermont, and Wisconsin.

3 Place label color correlates to the place fill color.

### SCHOOL DISTRICTS WITHIN COUNTY

TYPE	CODE	NAME
ELM	02340	Bradford Incorporated School District
ELM	02370	Braintree School District
ELM	02670	Brookfield School District
ELM	05940	Newbury School District
ELM	06210	Orange School District
ELM	06700	Randolph School District
ELM	08010	Thetford School District
ELM	08160	Tunbridge School District
ELM	08580	Washington School District
SEC	02400	Randolph Union High School District 2
SEC	08247	Orford Union High School District 30
UNI	00024	Rivendell Interstate School District
UNI	03100	Chelsea School District
UNI	07830	Stratford School District
UNI	08244	Blue Mountain Union School District 21
UNI	08242	Waits River Valley Union School District 36
UNI	09160	Williamstown School District



All legal boundaries and names are as of January 1, 2010. The boundaries shown on this map are for Census Bureau statistical data collection and tabulation purposes only; their depiction and designation for statistical purposes does not constitute a determination of jurisdictional authority or rights of ownership or entitlement.

Geographic: Vintage: 2010 Census (reference date: January 1, 2010)  
 Data Source: U.S. Census Bureau's MAINTIGR database (TAB100150)  
 Map Created by Geography Division: November 29, 2010

U.S. DEPARTMENT OF COMMERCE Economics and Statistics Administration U.S. Census Bureau

Projection: Albers Equal Area Conic  
 Datum: NAD 83  
 Spheroid: GRS 80  
 1st Standard Parallel: 43 06 28  
 2nd Standard Parallel: 44 31 57  
 Central Meridian: -72 27 05  
 Latitude of Projection's Origin: 42 43 36  
 False Easting: 0  
 False Northing: 0

The plotted map scale is 1:88244

USCENSUSBUREAU



PARENT SHEET 1  
 Total Sheets: 1  
 Index Sheets: 0  
 Parent Sheets: 1  
 Inset Sheets: 0

NAME: Orange County (017)  
 ENTITY TYPE: County or statistically equivalent entity  
 ST: Vermont (50)

2010 SD MAP (PARENT)  
 20110017001