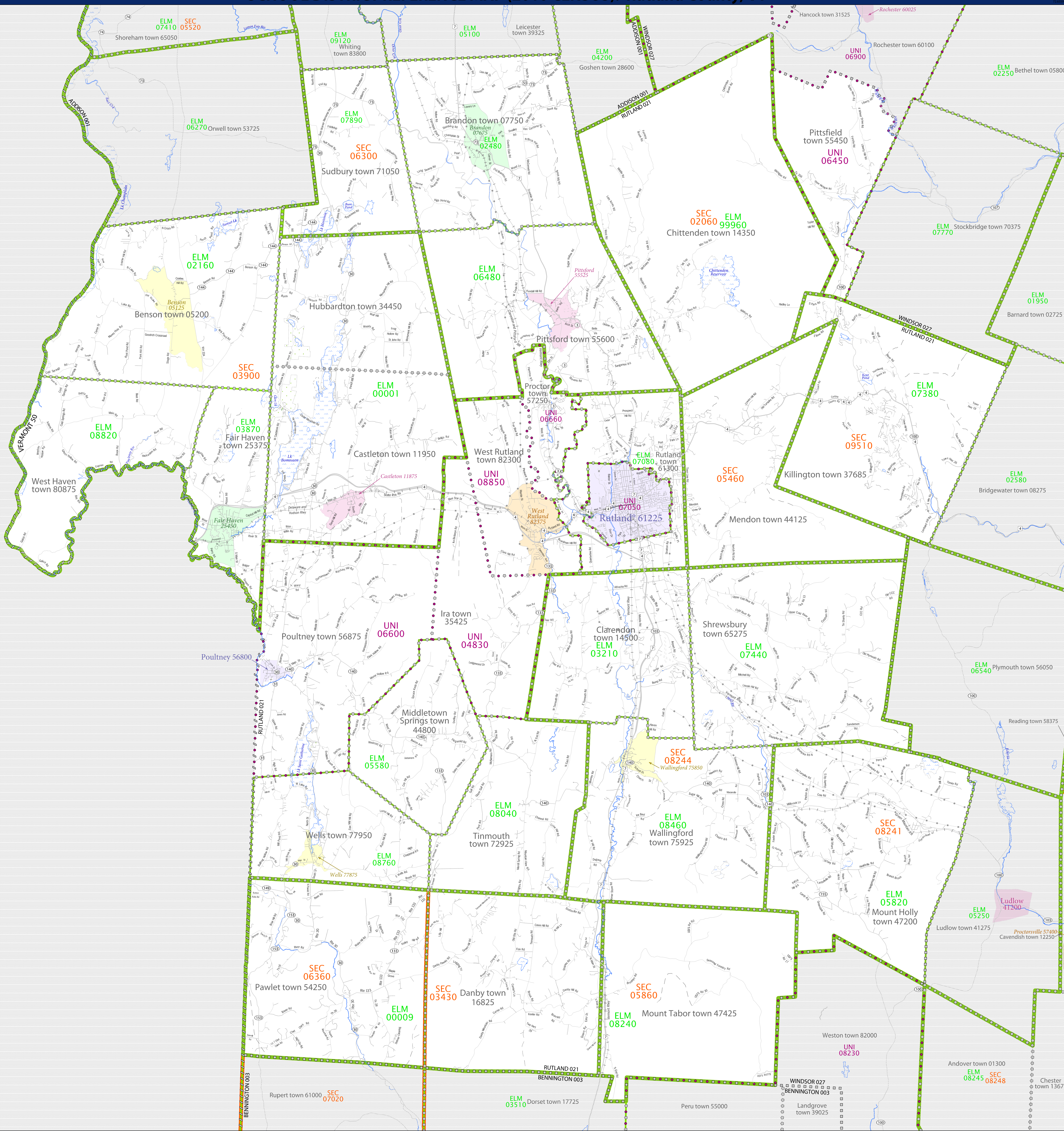


# SCHOOL DISTRICT REFERENCE MAP (2010 CENSUS): Rutland County, VT



SYMBOL DESCRIPTION		SYMBOL		LEGEND	
Federal American Indian Reservation	[Symbol]	L'ANSE RES 1880	[Symbol]	T1880	[Symbol]
Off-Reservation Trust Land	[Symbol]	Tama Res 4125	[Symbol]	NANA ANRC 52120	[Symbol]
State American Indian Reservation	[Symbol]	NEW YORK 36	[Symbol]	ERIE 029	[Symbol]
Alaska Native Regional Corporation	[Symbol]	Bristol town 07485	[Symbol]	MILFORD 47500	[Symbol]
State (or statistically equivalent entity)	[Symbol]	Davis 18100	[Symbol]	Incline Village 35100	[Symbol]
County (or statistically equivalent entity)	[Symbol]	UNI 03370	[Symbol]	SEC 99965	[Symbol]
Minor Civil Division (MCD) <sup>1,2</sup>	[Symbol]	ELM 02220	[Symbol]		
Consolidated City	[Symbol]				
Incorporated Place <sup>1,3</sup>	[Symbol]				
Census Designated Place (CDP) <sup>3</sup>	[Symbol]				
Unified School District	[Symbol]				
Secondary School District	[Symbol]				
Elementary School District	[Symbol]				

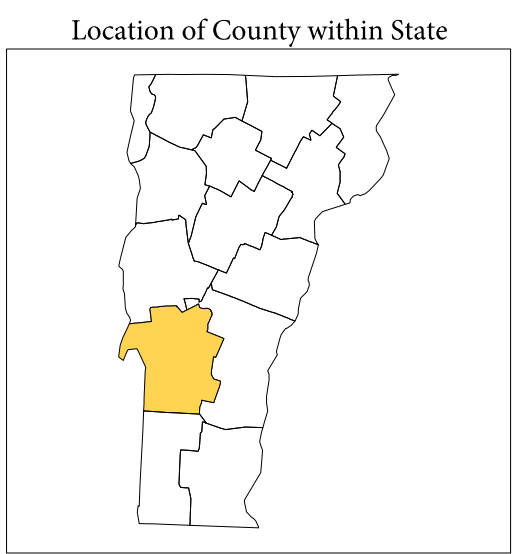
Where state, county, and/or MCD boundaries coincide, the map shows the boundary symbol for only the highest-ranking of these boundaries.

1 A "\*" following an MCD name denotes a false MCD. A "\*" following a place name indicates that a false MCD exists with the same name and FIPS code as the place; the false MCD label is not shown.

2 MCD boundaries are shown in the following states in which MCDs have functioning governments: Connecticut, Maine, Massachusetts, Michigan, Minnesota, New Hampshire, New Jersey, New York, Pennsylvania, Rhode Island, Vermont, and Wisconsin.

3 Place label color correlates to the place fill color.

SCHOOL DISTRICTS WITHIN COUNTY		
TYPE	CODE	NAME
ELM	00001	Castleton-Hubbardton Union School District 42
ELM	00009	Mettawee Community Union School District 47
ELM	02160	Benson School District
ELM	02480	Brandon School District
ELM	03210	Clarendon School District
ELM	03870	Fair Haven School District
ELM	05580	Middletown Springs School District
ELM	05820	Mount Holly School District
ELM	06480	Pittsford School District
ELM	07080	Rutland Town School District
ELM	07380	Shrewsbury School District
ELM	07480	Sudbury School District
ELM	07800	Timothy School District
ELM	08240	Carver Memorial Union School District 23
ELM	08460	Wallingford School District
ELM	08760	Wells School District
ELM	08820	West Haven School District
ELM	09960	Barstow Joint Contract School District
SEC	03060	Chittenden School District
SEC	03430	Danby School District
SEC	03900	Fair Haven Union High School District 16
SEC	05460	Mendon School District
SEC	05860	Mount Tabor School District
SEC	06360	Other Valley Union High School District 8
SEC	06360	Pawlet School District
SEC	08244	Black River Union School District 39
SEC	08244	Mill River Union School District 40
SEC	09510	Woodstock Union High School District 4
UNI	04830	Ira School District
UNI	06600	Poultney School District
UNI	06660	Proctor School District
UNI	07050	Rutland City School District
UNI	08850	West Rutland School District



All legal boundaries and names are as of January 1, 2010. The boundaries shown on this map are for Census Bureau statistical data collection and tabulation purposes only; their depiction and designation for statistical purposes does not constitute a determination of jurisdictional authority or rights of ownership or entitlement.

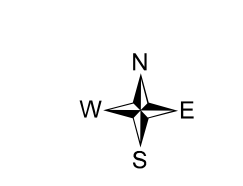
Geographic: Vintage: 2010 Census (reference date: January 1, 2010)  
 Data Source: U.S. Census Bureau's MAINTIGER database (TAB000150)  
 Map Created by Geography Division: November 29, 2010

U.S. DEPARTMENT OF COMMERCE Economics and Statistics Administration U.S. Census Bureau

Projection: Albers Equal Area Conic  
 Datum: NAD83  
 Spheroid: GRS 80  
 1st Standard Parallel: 43 06 28  
 2nd Standard Parallel: 44 31 57  
 Central Meridian: -72 27 05  
 Latitude of Projection's Origin: 42 43 36  
 False Easting: 0  
 False Northing: 0

Scale: 1:250,000  
 0 1 2 3 4 5 Kilometers  
 0 1 2 3 4 5 Miles

U.S. CENSUS BUREAU



PARENT SHEET 1  
 Total Sheets: 1  
 Index Sheets: 0  
 Parent Sheets: 1  
 Inset Sheets: 0

NAME: Rutland County (021)  
 ENTITY TYPE: County or statistically equivalent entity  
 ST: Vermont (50)