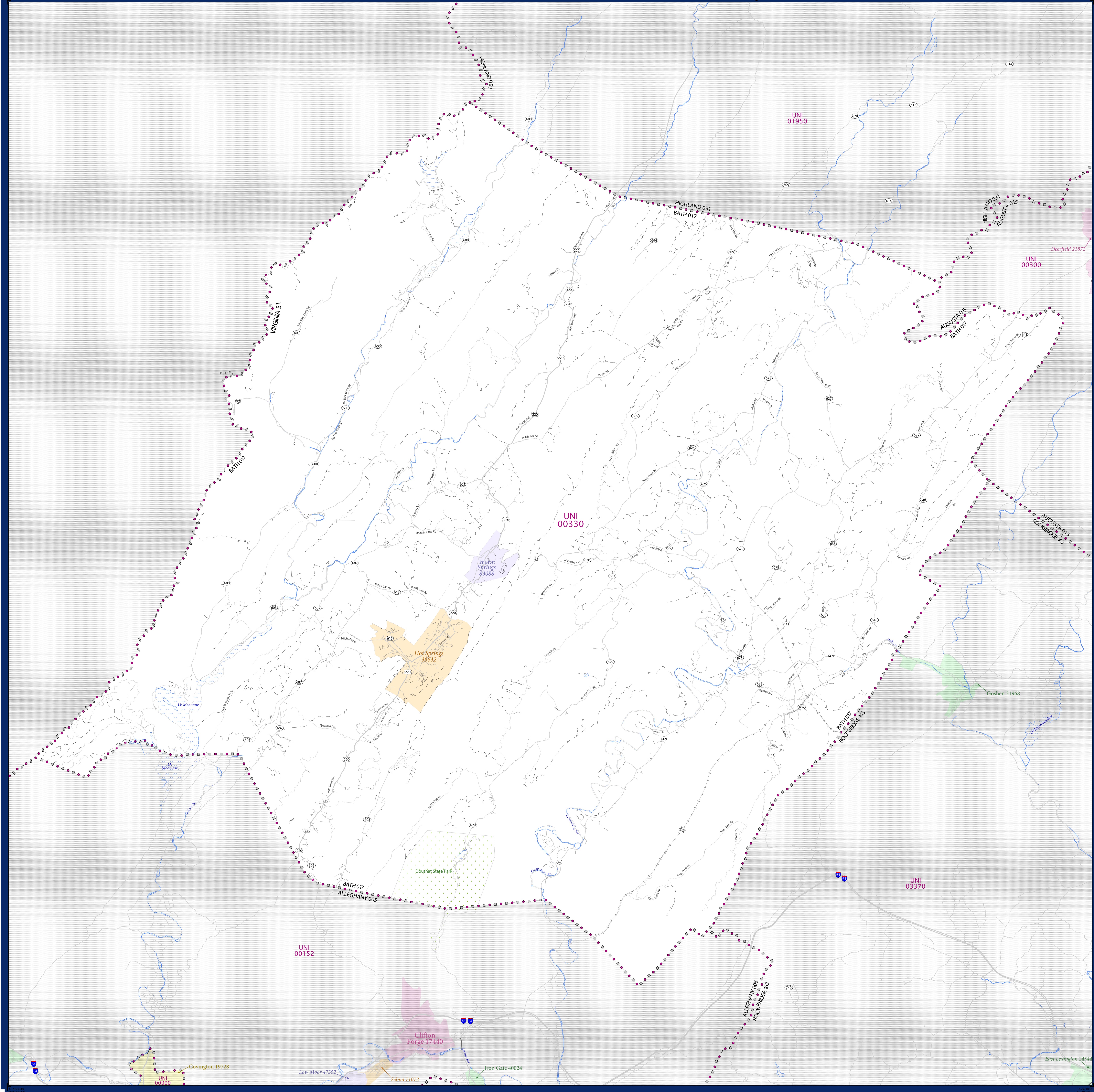


# SCHOOL DISTRICT REFERENCE MAP (2010 CENSUS): Bath County, VA



LEGEND	
SYMBOL DESCRIPTION	SYMBOL
Federal American Indian Reservation	[Symbol]
Off-Reservation Trust Land	[Symbol]
State American Indian Reservation	[Symbol]
Alaska Native Regional Corporation	[Symbol]
State (or statistically equivalent entity)	[Symbol]
County (or statistically equivalent entity)	[Symbol]
Minor Civil Division (MCD) <sup>1,2</sup>	[Symbol]
Consolidated City	[Symbol]
Incorporated Place <sup>1,3</sup>	[Symbol]
Census Designated Place (CDP) <sup>3</sup>	[Symbol]
Unified School District	[Symbol]
Secondary School District	[Symbol]
Elementary School District	[Symbol]

DESCRIPTION	SYMBOL	DESCRIPTION	SYMBOL
Interstate	[Symbol]	Water Body	[Symbol]
U.S. Highway	[Symbol]	Swamp or Marsh	[Symbol]
State Highway	[Symbol]	Glacier	[Symbol]
Other Road	[Symbol]	Military	[Symbol]
Other Road	[Symbol]	National or State Park, Forest, or Recreation Area	[Symbol]
Railroad	[Symbol]	Inset Area	[Symbol]
Pipeline or Power Line	[Symbol]	Outside Subject Area	[Symbol]
Ridge or Fence	[Symbol]		
Property Line	[Symbol]		
Nonvisible Boundary or Feature Not Elsewhere Classified	[Symbol]		

Where state, county, and/or MCD boundaries coincide, the map shows the boundary symbol for only the highest-ranking of these boundaries.

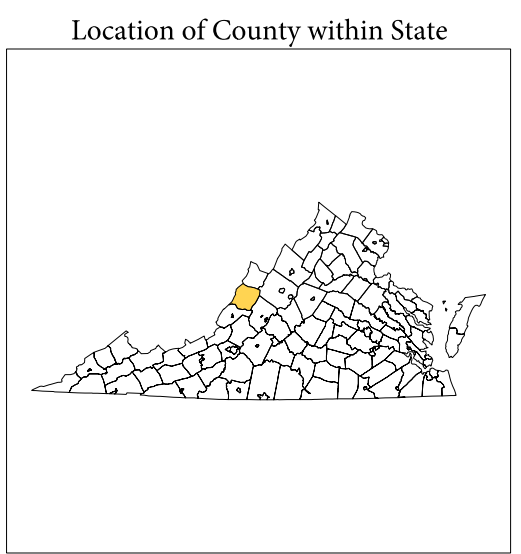
1 A "\*" following an MCD name denotes a false MCD. A "\*" following a place name indicates that a false MCD exists with the same name and FIPS code as the place; the false MCD label is not shown.

2 MCD boundaries are shown in the following states in which MCDs have functioning governments: Connecticut, Maine, Massachusetts, Michigan, Minnesota, New Hampshire, New Jersey, New York, Pennsylvania, Rhode Island, Vermont, and Wisconsin.

3 Place label color correlates to the place fill color.

**SCHOOL DISTRICTS WITHIN COUNTY**

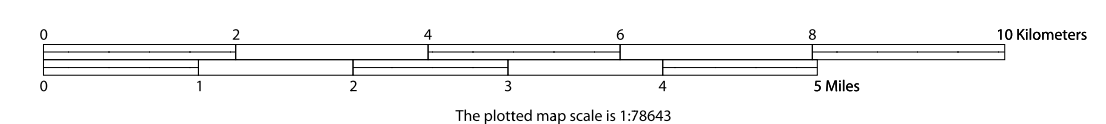
TYPE	CODE	NAME
UNI	00330	Bath County Public Schools



All legal boundaries and names are as of January 1, 2010. The boundaries shown on this map are for Census Bureau statistical data collection and tabulation purposes only; their depiction and designation for statistical purposes does not constitute a determination of jurisdictional authority or rights of ownership or entitlement.

Geographic Vintage: 2010 Census (reference date: January 1, 2010)  
 Data Source: U.S. Census Bureau's MAINTIGER database (TAB100131)  
 Map Created by Geography Division: November 26, 2010

Projection: Albers Equal Area Conic  
 Datum: NAD 83  
 Spheroid: GRS 80  
 1st Standard Parallel: 37 01 51  
 2nd Standard Parallel: 38 58 44  
 Central Meridian: -79 25 16  
 Latitude of Projection's Origin: 36 32 38  
 False Easting: 0  
 False Northing: 0



USCENSUSBUREAU

PARENT SHEET 1  
 Total Sheets: 1  
 Index Sheets: 0  
 Parent Sheets: 1  
 Inset Sheets: 0

NAME: Bath County (017)  
 ENTITY TYPE: County or statistically equivalent entity  
 ST: Virginia (51)