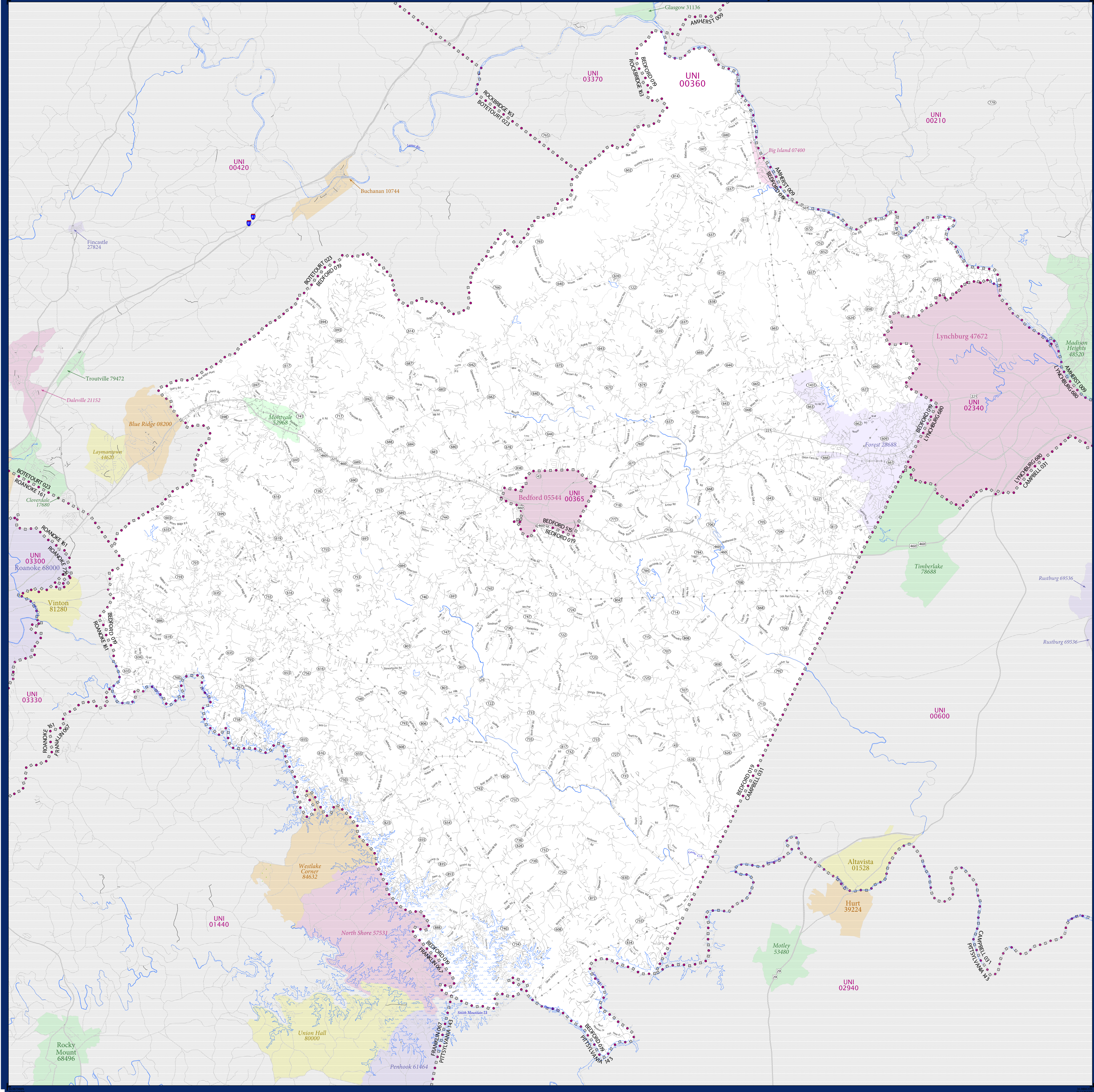


# SCHOOL DISTRICT REFERENCE MAP (2010 CENSUS): Bedford County, VA



### LEGEND

SYMBOL DESCRIPTION	SYMBOL	SYMBOL	SYMBOL
Federal American Indian Reservation	[Dotted pattern]	L'ANSE RES 1880	[Blue symbol]
Off-Reservation Trust Land	[Dotted pattern]	T1880	[Blue symbol]
State American Indian Reservation	[Dotted pattern]	Tama Res 4125	[Blue symbol]
Alaska Native Regional Corporation	[Dotted pattern]	NANA ANRC 52120	[Blue symbol]
State (or statistically equivalent entity)	[Dotted pattern]	NEW YORK 36	[Blue symbol]
County (or statistically equivalent entity)	[Dotted pattern]	ERIE 029	[Blue symbol]
Minor Civil Division (MCD) <sup>1,2</sup>	[Dotted pattern]	Bristol town 07485	[Blue symbol]
Consolidated City	[Dotted pattern]	MILFORD 47500	[Blue symbol]
Incorporated Place <sup>1,3</sup>	[Dotted pattern]	Davis 18100	[Blue symbol]
Census Designated Place (CDP) <sup>3</sup>	[Dotted pattern]	Incline Village 35100	[Blue symbol]
Unified School District	[Red dashed line]	UNI 03370	[Red dashed line]
Secondary School District	[Orange dashed line]	SEC 99965	[Orange dashed line]
Elementary School District	[Green dashed line]	ELM 02220	[Green dashed line]

DESCRIPTION	SYMBOL	DESCRIPTION	SYMBOL
Interstate	[Thick blue line]	Water Body	[Blue area]
U.S. Highway	[Thick black line]	Swamp or Marsh	[Green area]
State Highway	[Thin black line]	Glacier	[Blue area]
Other Road	[Thin grey line]	Military	[Blue area]
Railroad	[Black line with cross-ticks]	National or State Park, Forest, or Reservation Area	[Green area]
Pipeline or Power Line	[Thin black line]	Inset Area	[Grey area]
Ridge or Fence	[Thin black line]	Outside Subject Area	[Grey area]
Property Line	[Thin black line]		
Nonvisible Boundary or Feature Not Elsewhere Classified	[Thin black line]		

Where state, county, and/or MCD boundaries coincide, the map shows the boundary symbol for only the highest-ranking of these boundaries.

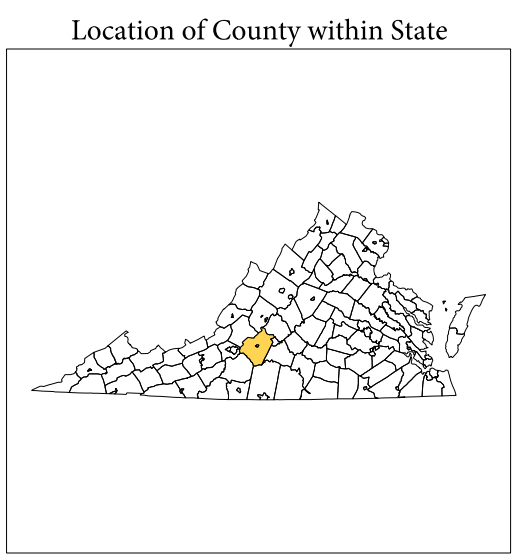
1 A "\*" following an MCD name denotes a false MCD. A "\*" following a place name indicates that a false MCD exists with the same name and FIPS code as the place; the false MCD label is not shown.

2 MCD boundaries are shown in the following states in which MCDs have functioning governments: Connecticut, Maine, Massachusetts, Michigan, Minnesota, New Hampshire, New Jersey, New York, Pennsylvania, Rhode Island, Vermont, and Wisconsin.

3 Place label color correlates to the place fill color.

### SCHOOL DISTRICTS WITHIN COUNTY

TYPE	CODE	NAME
UNI	00360	Bedford County Public Schools



All legal boundaries and names are as of January 1, 2010. The boundaries shown on this map are for Census Bureau statistical data collection and tabulation purposes only; their depiction and designation for statistical purposes does not constitute a determination of jurisdictional authority or rights of ownership or entitlement.

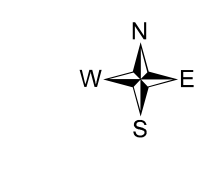
Geographic Vintage: 2010 Census (reference date: January 1, 2010)  
 Data Source: U.S. Census Bureau's MAINTIGR database (TAB000131)  
 Map Created by Geography Division: November 26, 2010

U.S. DEPARTMENT OF COMMERCE Economics and Statistics Administration U.S. Census Bureau

Projection: Albers Equal Area Conic  
 Datum: NAD 83  
 Spheroid: GRS 80  
 1st Standard Parallel: 37 01 51  
 2nd Standard Parallel: 38 58 44  
 Central Meridian: -79 25 16  
 Latitude of Projection's Origin: 36 32 38  
 False Easting: 0

The plotted map scale is 1:98183

U.S. DEPARTMENT OF COMMERCE Economics and Statistics Administration U.S. Census Bureau



PARENT SHEET 1  
 Total Sheets: 1  
 Index Sheets: 0  
 Parent Sheets: 1  
 Inset Sheets: 0

NAME: Bedford County (019)  
 ENTITY TYPE: County or statistically equivalent entity  
 ST: Virginia (51)