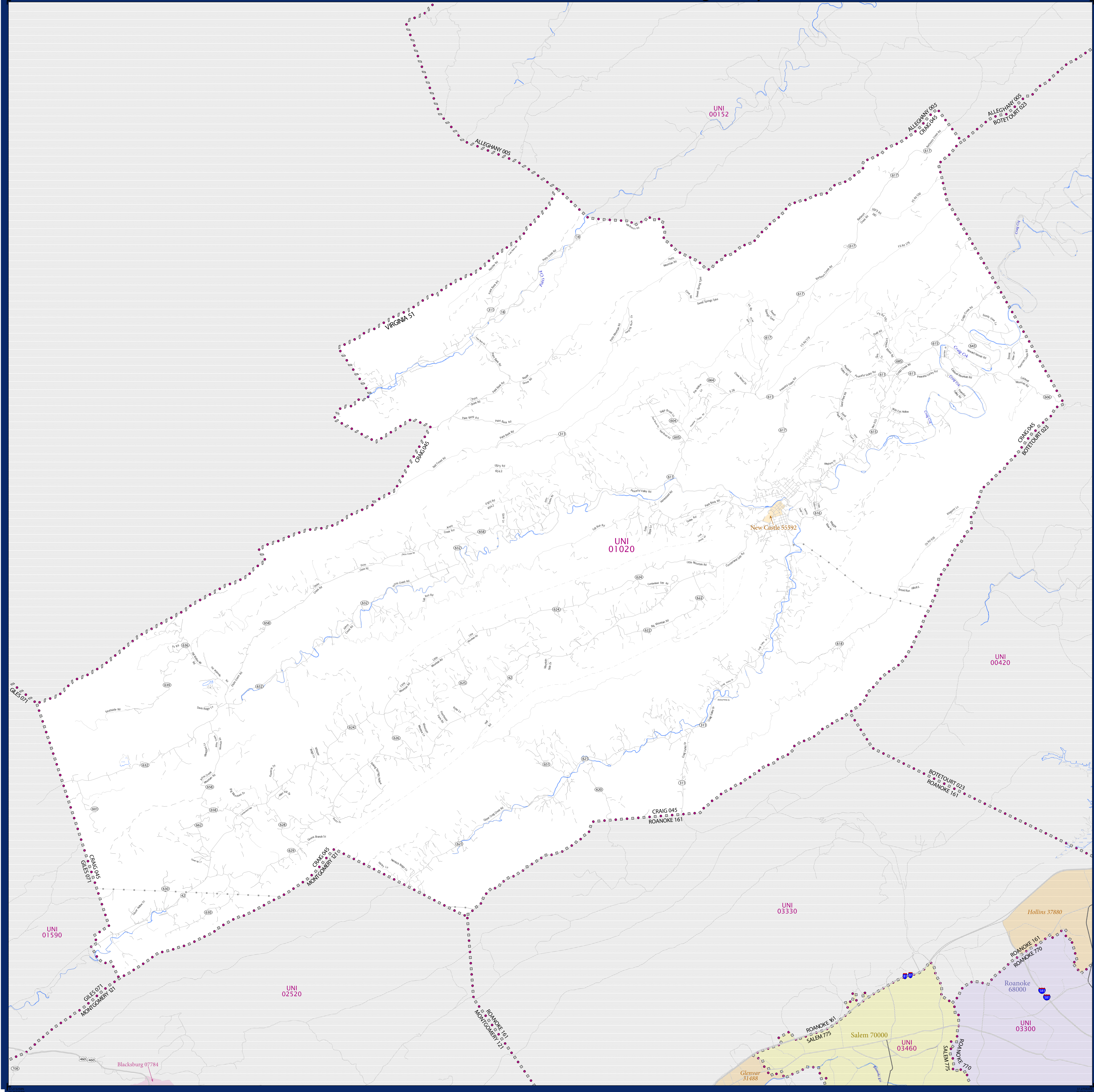


SCHOOL DISTRICT REFERENCE MAP (2010 CENSUS): Craig County, VA



LEGEND

SYMBOL DESCRIPTION	SYMBOL	LABEL STYLE
Federal American Indian Reservation	[Dotted pattern]	L'ANSE RES 1880
Off-Reservation Trust Land	[Dotted pattern]	T1880
State American Indian Reservation	[Dotted pattern]	Tama Res 4125
Alaska Native Regional Corporation	[Dotted pattern]	NANA ANRC 52120
State (or statistically equivalent entity)	[Dotted pattern]	NEW YORK 36
County (or statistically equivalent entity)	[Dotted pattern]	ERIE 029
Minor Civil Division (MCD) ^{1,2}	[Dotted pattern]	Bristol town 07485
Consolidated City	[Dotted pattern]	MILFORD 47500
Incorporated Place ³	[Dotted pattern]	Davis 18100
Census Designated Place (CDP) ³	[Dotted pattern]	Incline Village 35100
Unified School District	[Purple dashed line]	UNI 03370
Secondary School District	[Orange dashed line]	SEC 99965
Elementary School District	[Green dashed line]	ELM 02220

DESCRIPTION	SYMBOL	DESCRIPTION	SYMBOL
Interstate	[Blue line with shield]	Water Body	[Blue area]
U.S. Highway	[Black line with shield]	Swamp or Marsh	[Green area]
State Highway	[Black line with shield]	Glacier	[Blue area]
Other Road	[Black line]	Military	[Blue area]
Railroad	[Black line with cross-ticks]	National or State Park, Forest, or Recreation Area	[Green area]
Pipeline or Power Line	[Black line with cross-ticks]	Inset Area	[Grey area]
Ridge or Fence	[Black line with cross-ticks]	Outside Subject Area	[Grey area]
Property Line	[Black line with cross-ticks]		
Nonvisible Boundary or Feature Not Elsewhere Classified	[Black line with cross-ticks]		

Where state, county, and/or MCD boundaries coincide, the map shows the boundary symbol for only the highest-ranking of these boundaries.

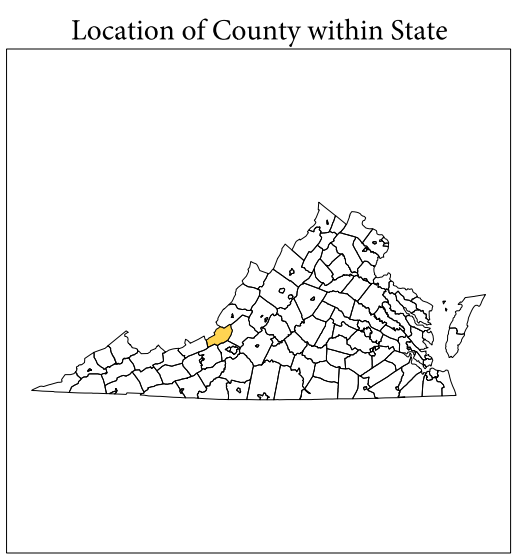
1 A "*" following an MCD name denotes a false MCD. A "*" following a place name indicates that a false MCD exists with the same name and FIPS code as the place; the false MCD label is not shown.

2 MCD boundaries are shown in the following states in which MCDs have functioning governments: Connecticut, Maine, Massachusetts, Michigan, Minnesota, New Hampshire, New Jersey, New York, Pennsylvania, Rhode Island, Vermont, and Wisconsin.

3 Place label color correlates to the place fill color.

SCHOOL DISTRICTS WITHIN COUNTY

TYPE	CODE	NAME
UNI	01000	Craig County Public Schools

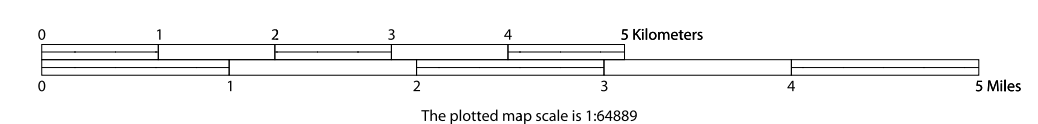


All legal boundaries and names are as of January 1, 2010. The boundaries shown on this map are for Census Bureau statistical data collection and tabulation purposes only; their depiction and designation for statistical purposes does not constitute a determination of jurisdictional authority or rights of ownership or entitlement.

Geographic: Vintage: 2010 Census (reference date: January 1, 2010)
 Data Source: U.S. Census Bureau's MAINTIGER database (TAB100131)
 Map Created by Geography Division: November 26, 2010

U.S. DEPARTMENT OF COMMERCE Economics and Statistics Administration U.S. Census Bureau

Projection: Albers Equal Area Conic
 Datum: NAD 83
 Spheroid: GRS 80
 1st Standard Parallel: 37 01 51
 2nd Standard Parallel: 38 58 44
 Central Meridian: -79 25 16
 Latitude of Projection's Origin: 36 32 38
 False Easting: 0
 False Northing: 0



USCENSUSBUREAU

PARENT SHEET 1
 Total Sheets: 1
 Index Sheets: 0
 Parent Sheets: 1
 Inset Sheets: 0

NAME: Craig County (045)
 ENTITY TYPE: County or statistically equivalent entity
 ST: Virginia (51)