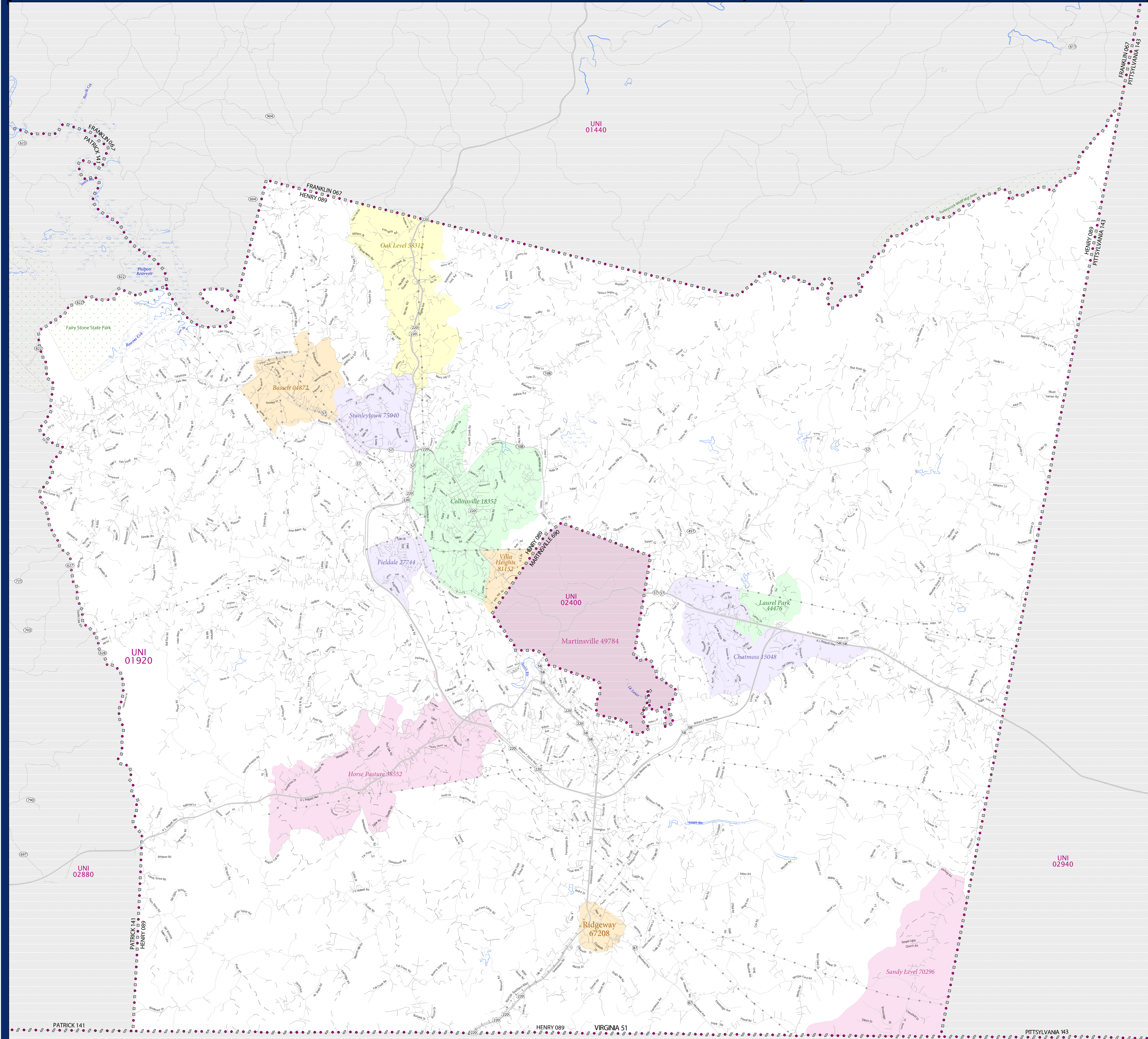


SCHOOL DISTRICT REFERENCE MAP (2010 CENSUS): Henry County, VA



SYMBOL DESCRIPTION		LEGEND	
SYMBOL DESCRIPTION	SYMBOL	SYMBOL	LABEL STYLE
Federal American Indian Reservation	[Symbol]	[Symbol]	L'ANSE RES 1880
Off-Reservation Trust Land	[Symbol]	[Symbol]	T1880
State American Indian Reservation	[Symbol]	[Symbol]	Tama Res 4125
Alaska Native Regional Corporation	[Symbol]	[Symbol]	NANA ANRC 52120
State (or statistically equivalent entity)	[Symbol]	[Symbol]	NEW YORK 36
County (or statistically equivalent entity)	[Symbol]	[Symbol]	ERIE 029
Minor Civil Division (MCD) ^{1,2}	[Symbol]	[Symbol]	Bristol town 07485
Consolidated City	[Symbol]	[Symbol]	MILFORD 47500
Incorporated Place ^{1,3}	[Symbol]	[Symbol]	Davis 18100
Census Designated Place (CDP) ³	[Symbol]	[Symbol]	Incline Village 35100
Unified School District	[Symbol]	[Symbol]	UNI 03370
Secondary School District	[Symbol]	[Symbol]	SEC 99965
Elementary School District	[Symbol]	[Symbol]	ELM 02220

DESCRIPTION	SYMBOL	DESCRIPTION	SYMBOL
Interstate	[Symbol]	Water Body	[Symbol]
U.S. Highway	[Symbol]	Swamp or Marsh	[Symbol]
State Highway	[Symbol]	Glacier	[Symbol]
Other Road	[Symbol]	Military	[Symbol]
QWRD Trail, Stairway, Alley, Walkway, or Ferry	[Symbol]	National or State Park, Forest, or Recreation Area	[Symbol]
Railroad	[Symbol]	Inset Area	[Symbol]
Pipeline or Power Line	[Symbol]	Outside Subject Area	[Symbol]
Ridge or Fence	[Symbol]		
Property Line	[Symbol]		
Nonvisible Boundary or Feature Not Elsewhere Classified	[Symbol]		

Where state, county, and/or MCD boundaries coincide, the map shows the boundary symbol for only the highest-ranking of these boundaries.

1 A " " following an MCD name denotes a false MCD. A " " following a place name indicates that a false MCD exists with the same name and FIPS code as the place; the false MCD label is not shown.

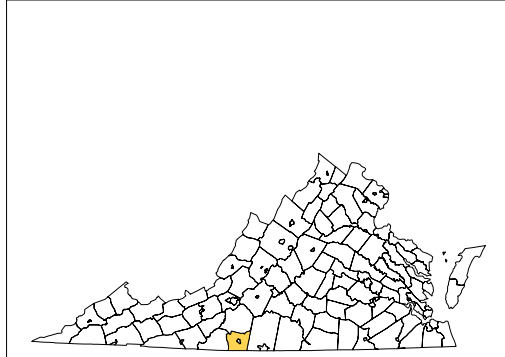
2 MCD boundaries are shown in the following states in which MCDs have functioning governments: Connecticut, Maine, Massachusetts, Michigan, Minnesota, New Hampshire, New Jersey, New York, Pennsylvania, Rhode Island, Vermont, and Wisconsin.

3 Place label color correlates to the place fill color.

SCHOOL DISTRICTS WITHIN COUNTY

TYPE	CODE	NAME
UNI	01920	Henry County Public Schools

Location of County within State

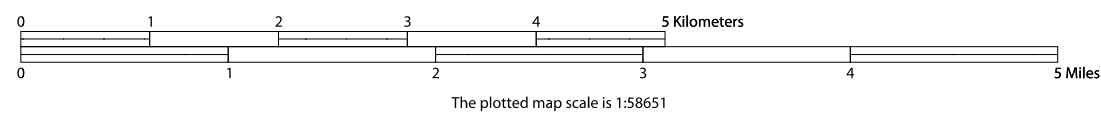


All legal boundaries and names are as of January 1, 2010. The boundaries shown on this map are for Census Bureau statistical data collection and tabulation purposes only; their depiction and designation for statistical purposes does not constitute a determination of jurisdictional authority or rights of ownership or entitlement.

Geographic Vintage: 2010 Census (reference date: January 1, 2010)
Data Source: U.S. Census Bureau's MA/7IG2 database (TAB00513)
Map Created by Geography Division: November 26, 2010

U.S. DEPARTMENT OF COMMERCE Economics and Statistics Administration U.S. Census Bureau

Projection: Albers Equal Area Conic
Datum: NAD 83
Spheroid: GRS 80
1st Standard Parallel: 37 01 51
2nd Standard Parallel: 38 58 44
Central Meridian: -79 25 16
Latitude of Projection's Origin: 36 32 38
False Easting: 0
False Northing: 0



USCENSUSBUREAU



PARENT SHEET 1

Total Sheets: 1
Index Sheets: 0
Parent Sheets: 1
Inset Sheets: 0

NAME: Henry County (089)
ENTITY TYPE: County or statistically equivalent entity
ST: Virginia (51)

2010 SD MAP (PARENT)
20101000001