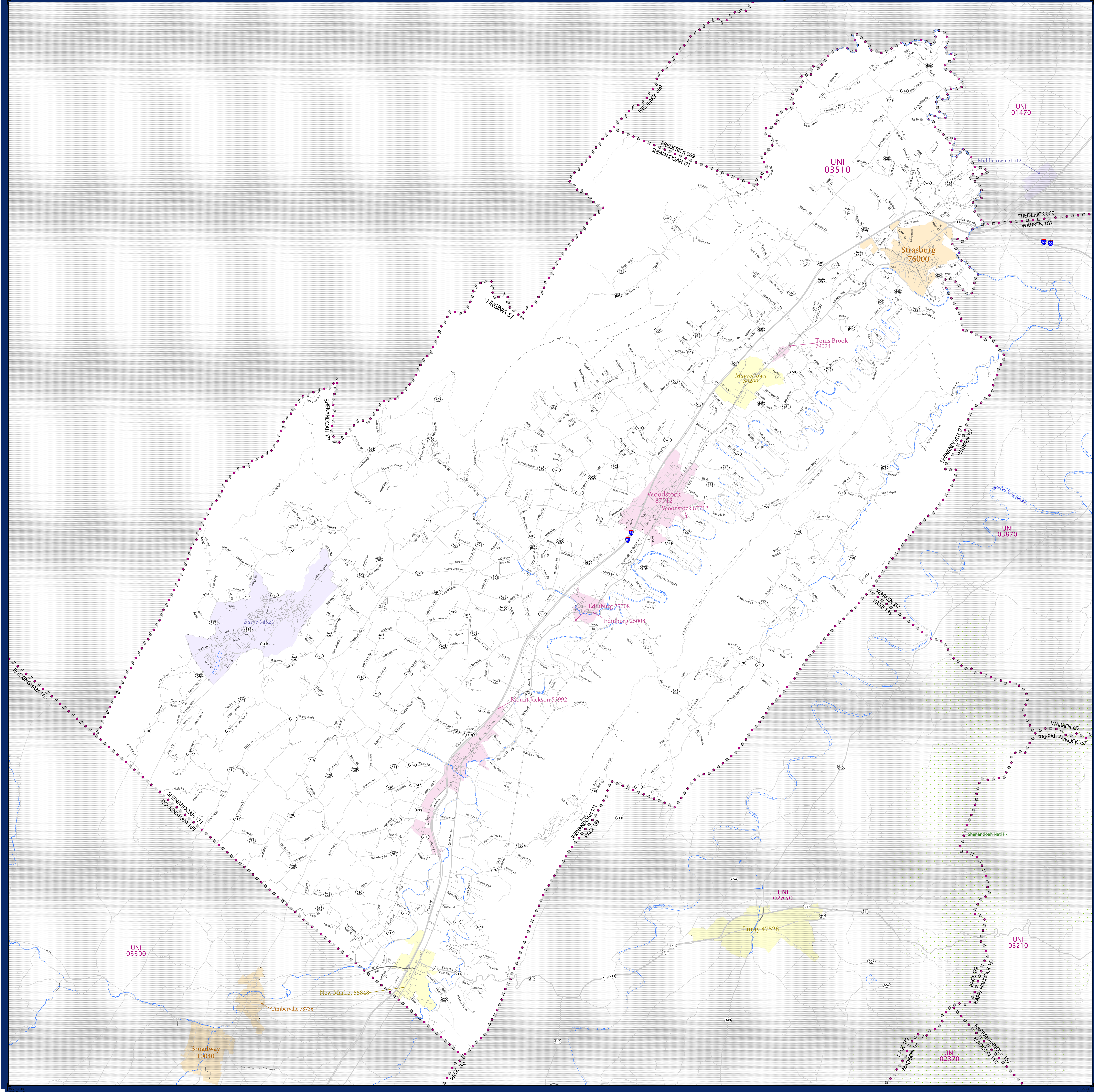


SCHOOL DISTRICT REFERENCE MAP (2010 CENSUS): Shenandoah County, VA



LEGEND

SYMBOL DESCRIPTION	SYMBOL	LABEL STYLE
Federal American Indian Reservation	[Dotted Pattern]	L'ANSE RES 1880
Off-Reservation Trust Land	[Dotted Pattern]	T1880
State American Indian Reservation	[Dotted Pattern]	Tama Res 4125
Alaska Native Regional Corporation	[Dotted Pattern]	NANA ANRC 52120
State (or statistically equivalent entity)	[Dotted Pattern]	NEW YORK 36
County (or statistically equivalent entity)	[Dotted Pattern]	ERIE 029
Minor Civil Division (MCD) ^{1,2}	[Dotted Pattern]	Bristol town 07485
Consolidated City	[Dotted Pattern]	MILFORD 47500
Incorporated Place ³	[Color Fill]	Davis 18100
Census Designated Place (CDP) ³	[Color Fill]	Incline Village 35100
Unified School District	[Red Dotted Line]	UNI 03370
Secondary School District	[Orange Dotted Line]	SEC 99965
Elementary School District	[Green Dotted Line]	ELM 02220

DESCRIPTION	SYMBOL	DESCRIPTION	SYMBOL
Interstate	[Thick Blue Line]	Water Body	[Blue Area]
U.S. Highway	[Double Line]	Swamp or Marsh	[Green Area]
State Highway	[Single Line]	Glacier	[Blue Area]
Other Road	[Thin Line]	Military	[Blue Area]
4WD Trail, Stamen, Alley, Walkway, or Ferry	[Thin Dashed Line]	National or State Park, Forest, or Recreation Area	[Green Area]
Railroad	[Line with Cross-ticks]	Inset Area	[Grey Area]
Pipeline or Power Line	[Line with Cross-ticks]	Outside Subject Area	[Grey Area]
Ridge or Fence	[Line with Cross-ticks]		
Property Line	[Dashed Line]		
Nonvisible Boundary or Feature Not Elsewhere Classified	[Dotted Line]		

Where state, county, and/or MCD boundaries coincide, the map shows the boundary symbol for only the highest-ranking of these boundaries.

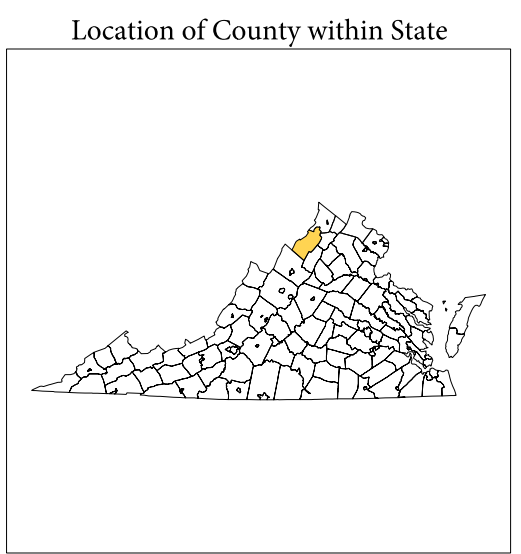
1 A "*" following an MCD name denotes a false MCD. A "*" following a place name indicates that a false MCD exists with the same name and FIPS code as the place; the false MCD label is not shown.

2 MCD boundaries are shown in the following states in which MCDs have functioning governments: Connecticut, Maine, Massachusetts, Michigan, Minnesota, New Hampshire, New Jersey, New York, Pennsylvania, Rhode Island, Vermont, and Wisconsin.

3 Place label color correlates to the place fill color.

SCHOOL DISTRICTS WITHIN COUNTY

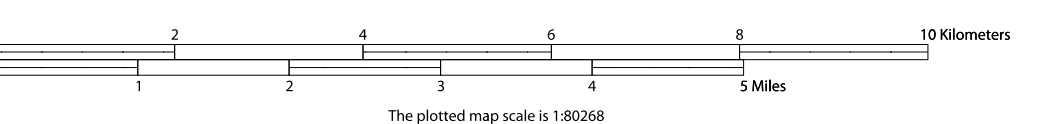
TYPE	CODE	NAME
UNI	03370	Shenandoah County Public Schools



All legal boundaries and names are as of January 1, 2010. The boundaries shown on this map are for Census Bureau statistical data collection and tabulation purposes only; their depiction and designation for statistical purposes does not constitute a determination of jurisdictional authority or rights of ownership or entitlement.

Geographic Vintage: 2010 Census (reference date: January 1, 2010)
 Data Source: U.S. Census Bureau's MA/7IGT database (TAB100731)
 Map Created by Geography Division: November 26, 2010

Projection: Albers Equal Area Conic
 Datum: NAD 83
 Spheroid: GRS 80
 1st Standard Parallel: 37 01 51
 2nd Standard Parallel: 38 58 44
 Central Meridian: 79 25 16
 Latitude of Projection's Origin: 36 32 38
 False Easting: 0
 False Northing: 0



USCENSUSBUREAU

PARENT SHEET 1
 Total Sheets: 1
 Index Sheets: 0
 Parent Sheets: 1
 Inset Sheets: 0

NAME: Shenandoah County (171)
 ENTITY TYPE: County or statistically equivalent entity
 ST: Virginia (51)