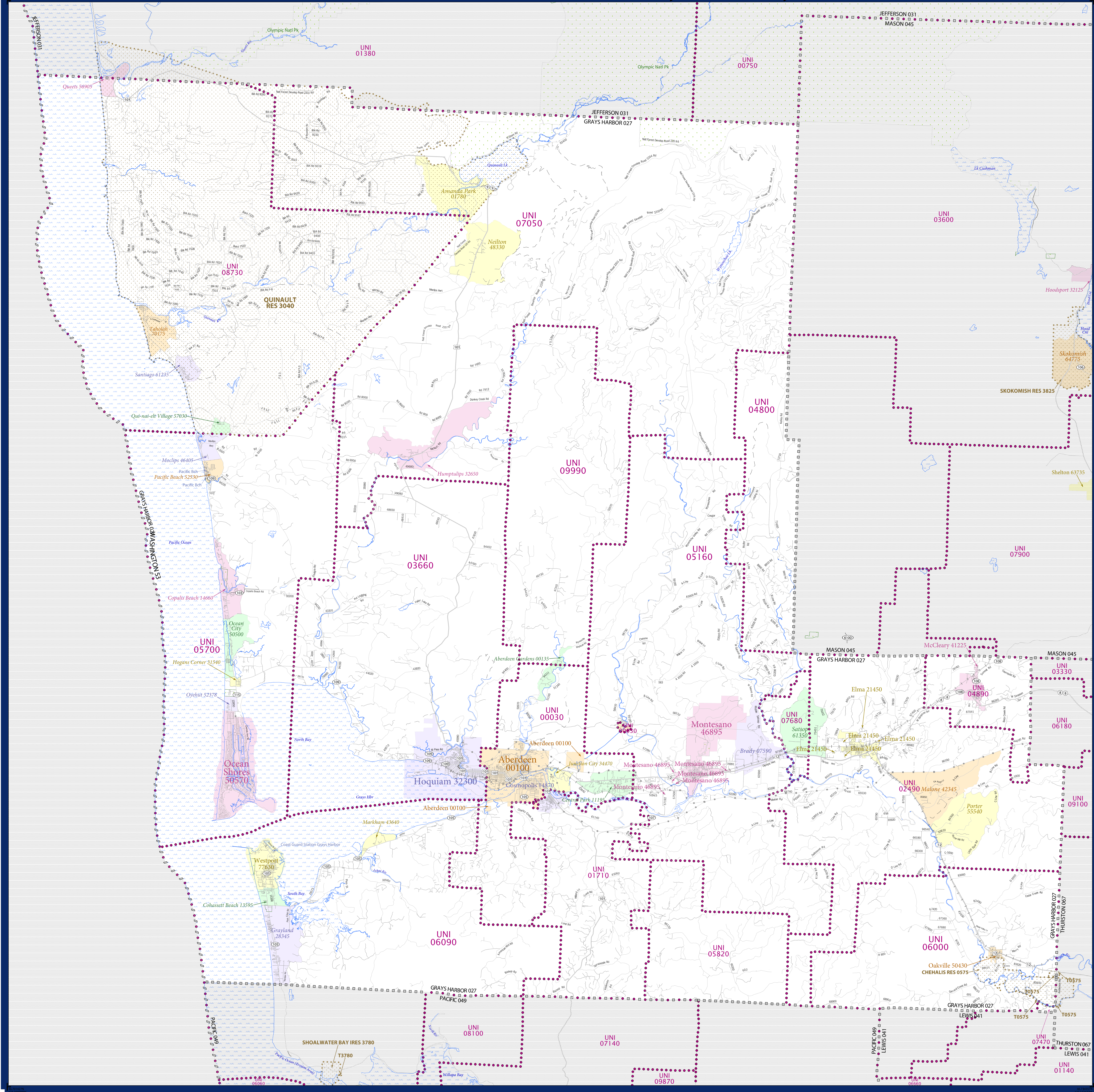


SCHOOL DISTRICT REFERENCE MAP (2010 CENSUS): Grays Harbor County, WA



LEGEND

| SYMBOL DESCRIPTION | SYMBOL | SYMBOL | SYMBOL |
|---|------------------|-----------------------|------------------|
| Federal American Indian Reservation | [Dotted pattern] | L'ANSE RES 1880 | [Dotted pattern] |
| Off-Reservation Trust Land | [Dotted pattern] | T1880 | [Dotted pattern] |
| State American Indian Reservation | [Dotted pattern] | Tama Res 4125 | [Dotted pattern] |
| Alaska Native Regional Corporation | [Dotted pattern] | NANA ANRC 52120 | [Dotted pattern] |
| State (or statistically equivalent entity) | [Dotted pattern] | NEW YORK 36 | [Dotted pattern] |
| County (or statistically equivalent entity) | [Dotted pattern] | ERIE 029 | [Dotted pattern] |
| Minor Civil Division (MCD) ^{1,2} | [Dotted pattern] | Bristol town 07485 | [Dotted pattern] |
| Consolidated City | [Dotted pattern] | MILFORD 47500 | [Dotted pattern] |
| Incorporated Place ³ | [Dotted pattern] | Davis 18100 | [Dotted pattern] |
| Census Designated Place (CDP) ³ | [Dotted pattern] | Incline Village 35100 | [Dotted pattern] |
| Unified School District | [Dotted pattern] | UNI 03370 | [Dotted pattern] |
| Secondary School District | [Dotted pattern] | SEC 99965 | [Dotted pattern] |
| Elementary School District | [Dotted pattern] | ELM 02220 | [Dotted pattern] |

| DESCRIPTION | SYMBOL | DESCRIPTION | SYMBOL |
|---|-------------------|--|------------------|
| Interstate | [Thick blue line] | Water Body | [Blue wavy line] |
| U.S. Highway | [Thin blue line] | Swamp or Marsh | [Blue wavy line] |
| State Highway | [Thin blue line] | Glacier | [Blue wavy line] |
| Other Road | [Thin blue line] | Military | [Blue wavy line] |
| RDW Trail, Stamen, Alley, Walkway, or Ferry | [Thin blue line] | National or State Park, Forest, or Recreation Area | [Blue wavy line] |
| Railroad | [Thin blue line] | Inset Area | [Blue wavy line] |
| Pipeline or Power Line | [Thin blue line] | Outside Subject Area | [Blue wavy line] |
| Ridge or Fence | [Thin blue line] | | |
| Property Line | [Thin blue line] | | |
| Nonvisible Boundary or Feature Not Elsewhere Classified | [Thin blue line] | | |

Where state, county, and/or MCD boundaries coincide, the map shows the boundary symbol for only the highest-ranking of these boundaries.

1 A "*" following an MCD name denotes a false MCD. A "*" following a place name indicates that a false MCD exists with the same name and FIPS code as the place; the false MCD label is not shown.

2 MCD boundaries are shown in the following states in which MCDs have functioning governments: Connecticut, Maine, Massachusetts, Michigan, Minnesota, New Hampshire, New Jersey, New York, Pennsylvania, Rhode Island, Vermont, and Wisconsin.

3 Place label color correlates to the place fill color.

OFF-RESERVATION TRUST LAND NAMES

T0575 Chehalis

SCHOOL DISTRICTS WITHIN COUNTY

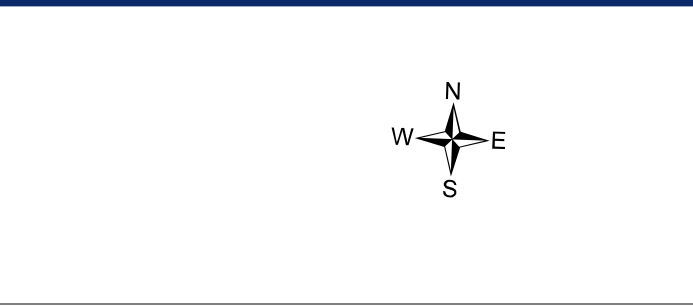
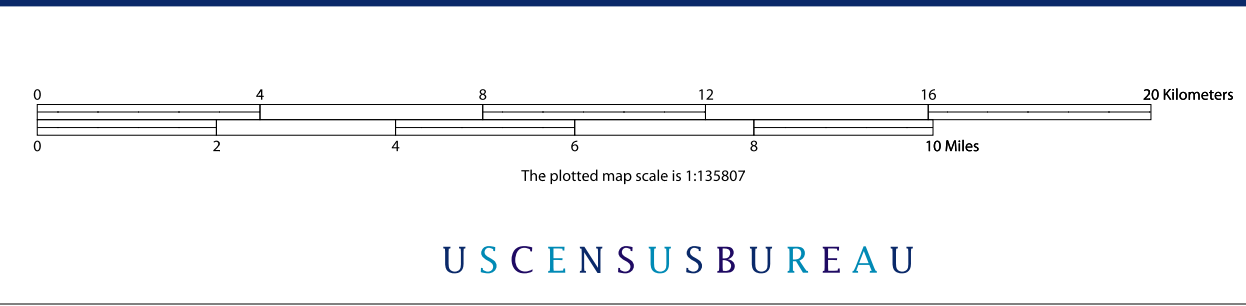
| TYPE | CODE | NAME |
|------|-------|--------------------------------|
| UNI | 0000 | Aberdeen School District |
| UNI | 01710 | Cosmopolis School District |
| UNI | 02490 | Elma School District |
| UNI | 03600 | Hoquiam School District |
| UNI | 04800 | May M. Knight School District |
| UNI | 04890 | McCleary School District |
| UNI | 05160 | Montesano School District |
| UNI | 05700 | North Beach School District |
| UNI | 05800 | North Shore School District |
| UNI | 06000 | Dakville School District |
| UNI | 06000 | Oxissa School District |
| UNI | 07050 | Lake Quinalt School District |
| UNI | 07410 | Rocheester School District |
| UNI | 07680 | Satop School District |
| UNI | 08730 | Taholah School District |
| UNI | 09990 | Wishkah Valley School District |



All legal boundaries and names are as of January 1, 2010. The boundaries shown on this map are for Census Bureau statistical data collection and tabulation purposes only; their depiction and designation for statistical purposes does not constitute a determination of jurisdictional authority or rights of ownership or entitlement.

Geographic: Vintage: 2010 Census (reference date: January 1, 2010)
 Data Source: U.S. Census Bureau's MA7/TIGER database (TAB100133)
 Map Created by Geography Division: December 12, 2010

Projection: Albers Equal Area Conic
 Datum: NAD83
 Spheroid: GRS 80
 1st Standard Parallel: 46.07 12
 2nd Standard Parallel: 48.25 34
 Central Meridian: -120.52 52
 Latitude of Projection's Origin: 45.32 37
 False Easting: 0
 False Northing: 0



PARENT SHEET 1
 Total Sheets: 1
 Index Sheets: 0
 Parent Sheets: 1
 Inset Sheets: 0

NAME: Grays Harbor County (027)
 ENTITY TYPE: County or statistically equivalent entity
 ST: Washington (53)

2010 SD MAP (PARENT)
 20100327001