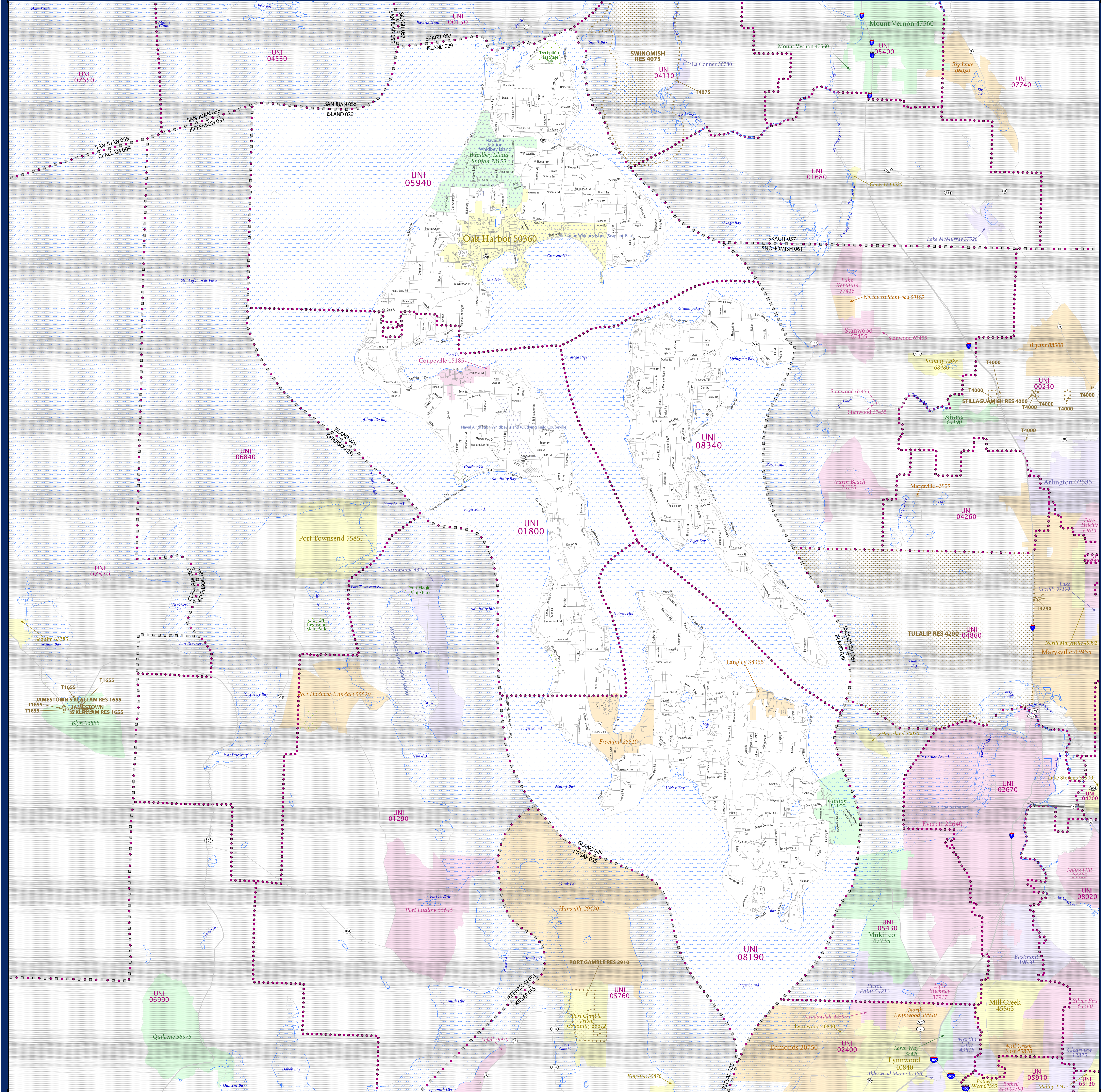


# SCHOOL DISTRICT REFERENCE MAP (2010 CENSUS): Island County, WA



SYMBOL DESCRIPTION		LEGEND	
Federal American Indian Reservation		SYMBOL	L'ANSE RES 1880
Off-Reservation Trust Land		SYMBOL	T1880
State American Indian Reservation		SYMBOL	Tama Res 4125
Alaska Native Regional Corporation		SYMBOL	NANA ANRC 52120
State (or statistically equivalent entity)		SYMBOL	NEW YORK 36
County (or statistically equivalent entity)		SYMBOL	ERIE 029
Minor Civil Division (MCD) <sup>1,2</sup>		SYMBOL	Bristol town 07485
Consolidated City		SYMBOL	MILFORD 47500
Incorporated Place <sup>3</sup>		SYMBOL	Davis 18100
Census Designated Place (CDP) <sup>3</sup>		SYMBOL	Incline Village 35100
Unified School District		SYMBOL	UNI 03370
Secondary School District		SYMBOL	SEC 99965
Elementary School District		SYMBOL	ELM 02220

SYMBOL DESCRIPTION		SYMBOL	
Interstate		Water Body	
U.S. Highway		Swamp or Marsh	
State Highway		Other Road	
Other Road		4WD Trail, Steamer, Alley, Walkway, or Ferry	
Railroad		Railroad	
Pipeline or Power Line		Military	
Ridge or Fence		National or State Park, Forest, or Reservation Area	
Property Line		Inset Area	
Nonvisible Boundary or Feature Not Elsewhere Classified		Outside Subject Area	

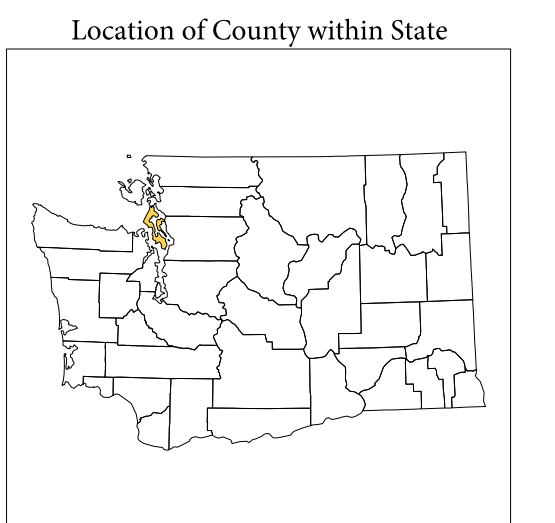
Where state, county, and/or MCD boundaries coincide, the map shows the boundary symbol for only the highest-ranking of these boundaries.

1 A "\*" following an MCD name denotes a false MCD. A "\*" following a place name indicates that a false MCD exists with the same name and FIPS code as the place; the false MCD label is not shown.

2 MCD boundaries are shown in the following states in which MCDs have functioning governments: Connecticut, Maine, Massachusetts, Michigan, Minnesota, New Hampshire, New Jersey, New York, Pennsylvania, Rhode Island, Vermont, and Wisconsin.

3 Place label color correlates to the place fill color.

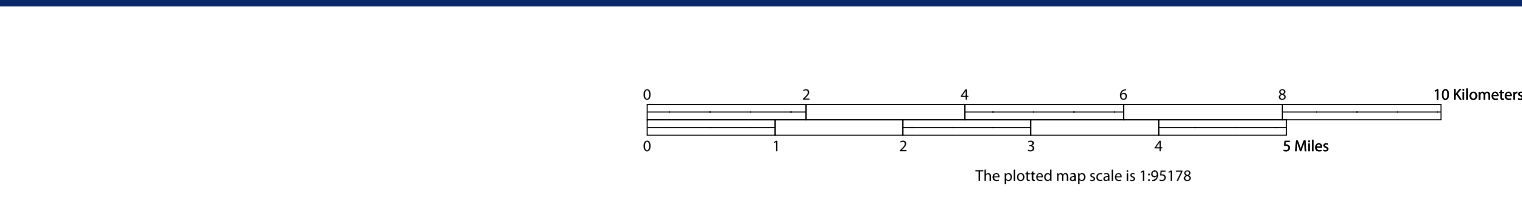
SCHOOL DISTRICTS WITHIN COUNTY
UNI 01800 Coupeville School District
UNI 05940 Oak Harbor School District
UNI 08190 South Whidbey School District
UNI 08340 Stanwood-Camano School District



All legal boundaries and names are as of January 1, 2010. The boundaries shown on this map are for Census Bureau statistical data collection and tabulation purposes only; their depiction and designation for statistical purposes does not constitute a determination of jurisdictional authority or rights of ownership or entitlement.

Geographic: Vintage: 2010 Census (reference date: January 1, 2010)  
 Data Source: U.S. Census Bureau's MAINTIGRE database (T4810513)  
 Map Created by Geography Division: December 12, 2010

Projection: Albers Equal Area Conic  
 Datum: NAD83  
 Spheroid: GRS 80  
 1st Standard Parallel: 46 07 12  
 2nd Standard Parallel: 48 25 34  
 Central Meridian: -120 52 52  
 Latitude of Projection's Origin: 45 32 37  
 False Easting: 0  
 False Northing: 0



USCENSUSBUREAU

PARENT SHEET 1  
 Total Sheets: 1  
 Index Sheets: 0  
 Parent Sheets: 1  
 Inset Sheets: 0

NAME: Island County (029)  
 ENTITY TYPE: County or statistically equivalent entity  
 ST: Washington (53)

2010 SD MAP (PARENT) 2010030001