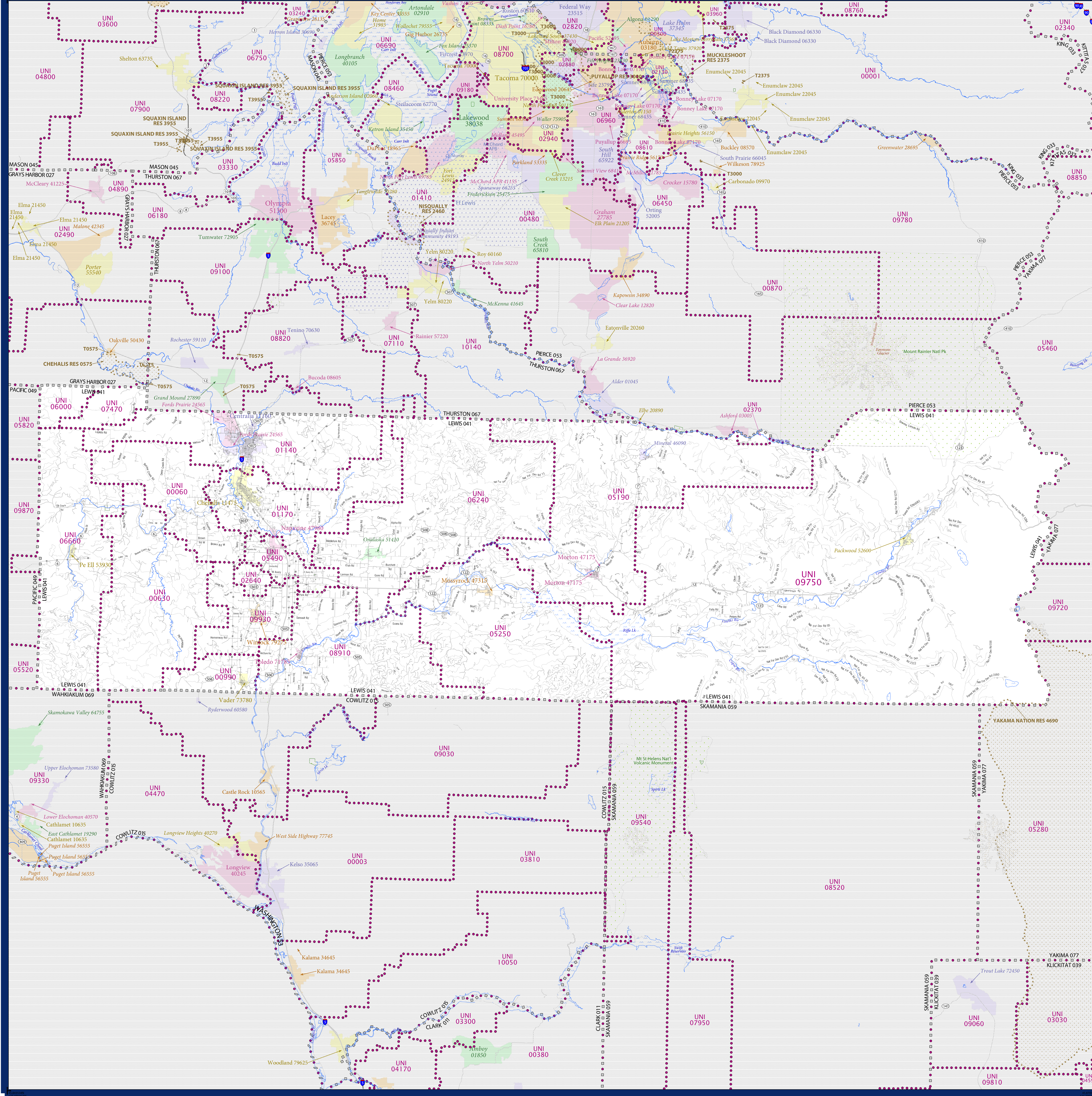


SCHOOL DISTRICT REFERENCE MAP (2010 CENSUS): Lewis County, WA



LEGEND

SYMBOL DESCRIPTION	SYMBOL	SYMBOL DESCRIPTION	SYMBOL
Federal American Indian Reservation	[Dotted pattern]	Water Body	[Blue wavy line]
Off-Reservation Trust Land	[Dotted pattern]	Swamp or Marsh	[Blue wavy line]
State American Indian Reservation	[Dotted pattern]	Glacier	[Blue wavy line]
Alaska Native Regional Corporation	[Dotted pattern]	Military	[Blue wavy line]
State (or statistically equivalent entry)	[Dotted pattern]	National or State Park, Forest, or Recreation Area	[Blue wavy line]
County (or statistically equivalent entry)	[Dotted pattern]	Inset Area	[Blue wavy line]
Minor Civil Division (MCD) ^{1,2}	[Dotted pattern]	Outside Subject Area	[Blue wavy line]
Consolidated City	[Dotted pattern]		
Incorporated Place ^{1,3}	[Dotted pattern]		
Census Designated Place (CDP) ¹	[Dotted pattern]		
Unified School District	[Purple dashed line]		
Secondary School District	[Orange dashed line]		
Elementary School District	[Green dashed line]		

Where state, county, and/or MCD boundaries coincide, the map shows the boundary symbol for only the highest-ranking of these boundaries.

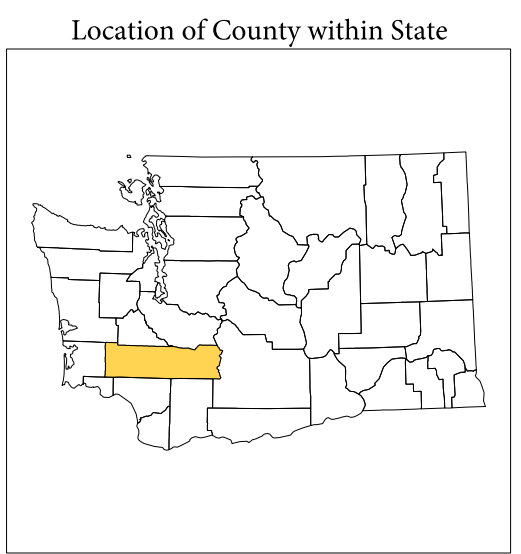
1 A "*" following an MCD name denotes a false MCD. A "*" following a place name indicates that a false MCD exists with the same name and FIPS code as the place; the false MCD label is not shown.

2 MCD boundaries are shown in the following states in which MCDs have functioning governments: Connecticut, Maine, Massachusetts, Michigan, Minnesota, New Hampshire, New Jersey, New York, Pennsylvania, Rhode Island, Vermont, and Wisconsin.

3 Place label color correlates to the place fill color.

SCHOOL DISTRICTS WITHIN COUNTY

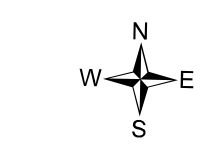
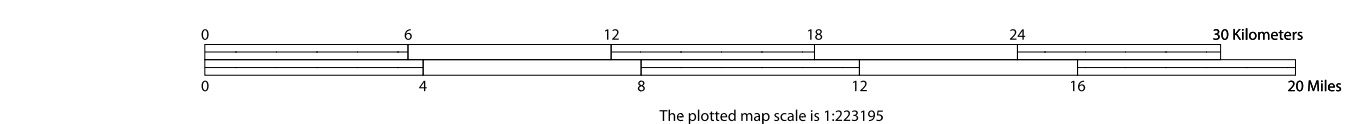
TYPE	CODE	NAME
UNI	00630	Adna School District
UNI	00900	Bainbridge School District
UNI	01140	Castle Rock School District
UNI	01170	Centralia School District
UNI	02370	Chelan School District
UNI	02640	Evansville School District
UNI	05190	Morton School District
UNI	02250	Mossyrock School District
UNI	05400	Nasawine School District
UNI	06000	Oakville School District
UNI	06240	Onalaska School District
UNI	06640	Pe Ell School District
UNI	07470	Rochester School District
UNI	08810	Tolmie School District
UNI	09750	White Pass School District
UNI	09930	Winlock School District



All legal boundaries and names are as of January 1, 2010. The boundaries shown on this map are for Census Bureau's statistical data collection and tabulation purposes only; their depiction and designation for statistical purposes does not constitute a determination of jurisdictional authority or rights of ownership or entitlement.

Geographic Vintage: 2010 U.S. Census (reference date: January 1, 2010)
 Data Source: U.S. Census Bureau's MAINTIGR database (TAB100133)
 Map Created by Geography Division: December 10, 2010

Projection: Albers Equal Area Conic
 Datum: NAD 83
 Spheroid: GRS 80
 1st Standard Parallel: 46 07 12
 2nd Standard Parallel: 48 25 34
 Central Meridian: -120 52 52
 Latitude of Projection's Origin: 45 32 37
 False Easting: 0
 False Northing: 0



USCENSUSBUREAU

PARENT SHEET 1
 Total Sheets: 1
 Index Sheets: 0
 Parent Sheets: 1
 Inset Sheets: 0

NAME: Lewis County (041)
 ENTITY TYPE: County or statistically equivalent entity
 ST: Washington (53)