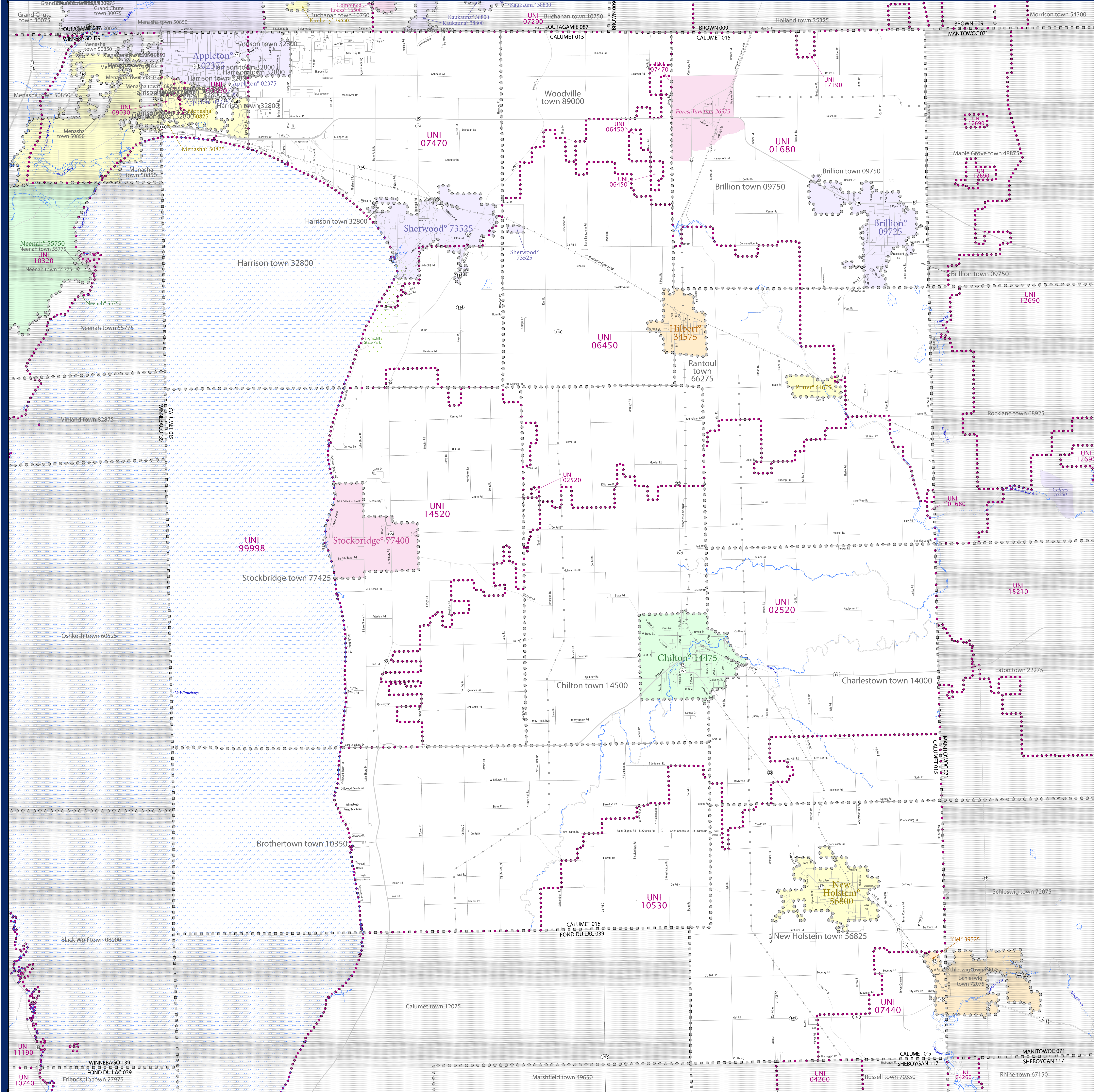


SCHOOL DISTRICT REFERENCE MAP (2010 CENSUS): Calumet County, WI



SYMBOL DESCRIPTION		LEGEND	
	Federal American Indian Reservation		L'ANSE RES 1880
	Off-Reservation Trust Land		T1880
	State American Indian Reservation		Tama Res 4125
	Alaska Native Regional Corporation		NANA ANRC 52120
	State (or statistically equivalent entity)		NEW YORK 36
	County (or statistically equivalent entity)		ERIE 029
	Minor Civil Division (MCD) ^{1,2}		Bristol town 07485
	Consolidated City		MILFORD 47500
	Incorporated Place ^{1,3}		Davis 18100
	Census Designated Place (CDP) ³		Incline Village 35100
	Unified School District		UNI 03370
	Secondary School District		565 99965
	Elementary School District		ELM 02220

DESCRIPTION	SYMBOL	DESCRIPTION	SYMBOL
Interstate		Water Body	
U.S. Highway		Swamp or Marsh	
State Highway		Glacier	
Other Road		Military	
4WD Trail, Stoney, Alley, Walkway, or Ferry		National or State Park, Forest, or Recreation Area	
Railroad		Inset Area	
Pipeline or Power Line		Outside Subject Area	
Ridge or Fence			
Property Line			
Nonvisible Boundary or Feature Not Elsewhere Classified			

Where state, county, and/or MCD boundaries coincide, the map shows the boundary symbol for only the highest-ranking of these boundaries.

1 A "*" following an MCD name denotes a false MCD. A "*" following a place name indicates that a false MCD exists with the same name and FIPS code as the place; the false MCD label is not shown.

2 MCD boundaries are shown in the following states in which MCDs have functioning governments: Connecticut, Maine, Massachusetts, Michigan, Minnesota, New Hampshire, New Jersey, New York, Pennsylvania, Rhode Island, Vermont, and Wisconsin.

3 Place label color correlates to the place fill color.

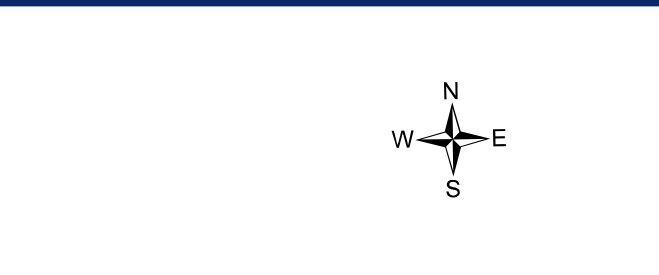
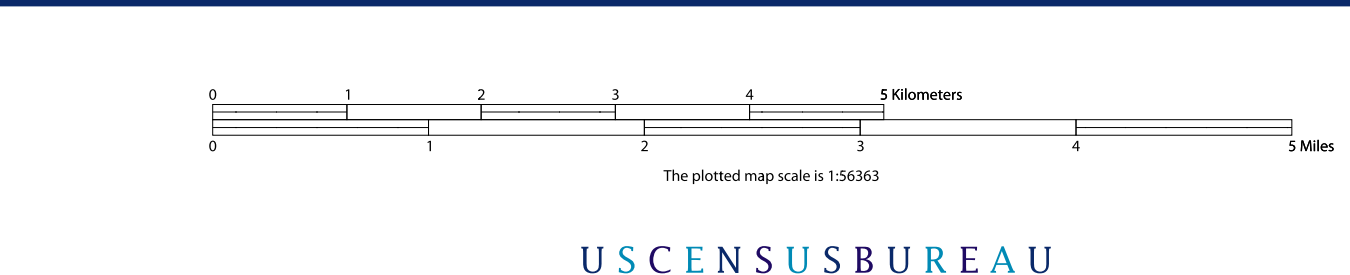
SCHOOL DISTRICTS WITHIN COUNTY	TYPE	CODE	NAME
Appleton Area School District	UNI	03370	
Brillion School District	UNI	01680	
Chilton School District	UNI	02520	
Hilbert School District	UNI	06450	
Kiel Area School District	UNI	07440	
Kimberly Area School District	UNI	09030	
Menasha School District	UNI	05080	
New Holstein School District	UNI	05680	
Stockbridge School District	UNI	07740	
Wrightstown Community School District	UNI	07190	
School District Not Defined (Water)	UNI	99999	



All legal boundaries and names are as of January 1, 2010. The boundaries shown on this map are for Census Bureau's statistical data collection and tabulation purposes only; their depiction and designation for statistical purposes does not constitute a determination of jurisdictional authority or rights of ownership or entitlement.

Geographic: Vintage: 2010 Census (reference date: January 1, 2010)
 Data Source: U.S. Census Bureau's MAINTIGR database (TAB100153)
 Map Created by Geography Division: December 12, 2010

Projection: Albers Equal Area Conic
 Datum: NAD83
 Spheroid: GRS 80
 1st Standard Parallel: 43 18 27
 2nd Standard Parallel: 46 30 33
 Central Meridian: 89 34 05
 Latitude of Projection's Origin: 42 30 25
 False Easting: 0
 False Northing: 0



PARENT SHEET 1
 Total Sheets: 1
 Index Sheets: 0
 Parent Sheets: 1
 Inset Sheets: 0

NAME: Calumet County (015)
 ENTITY TYPE: County or statistically equivalent entity
 ST: Wisconsin (55)