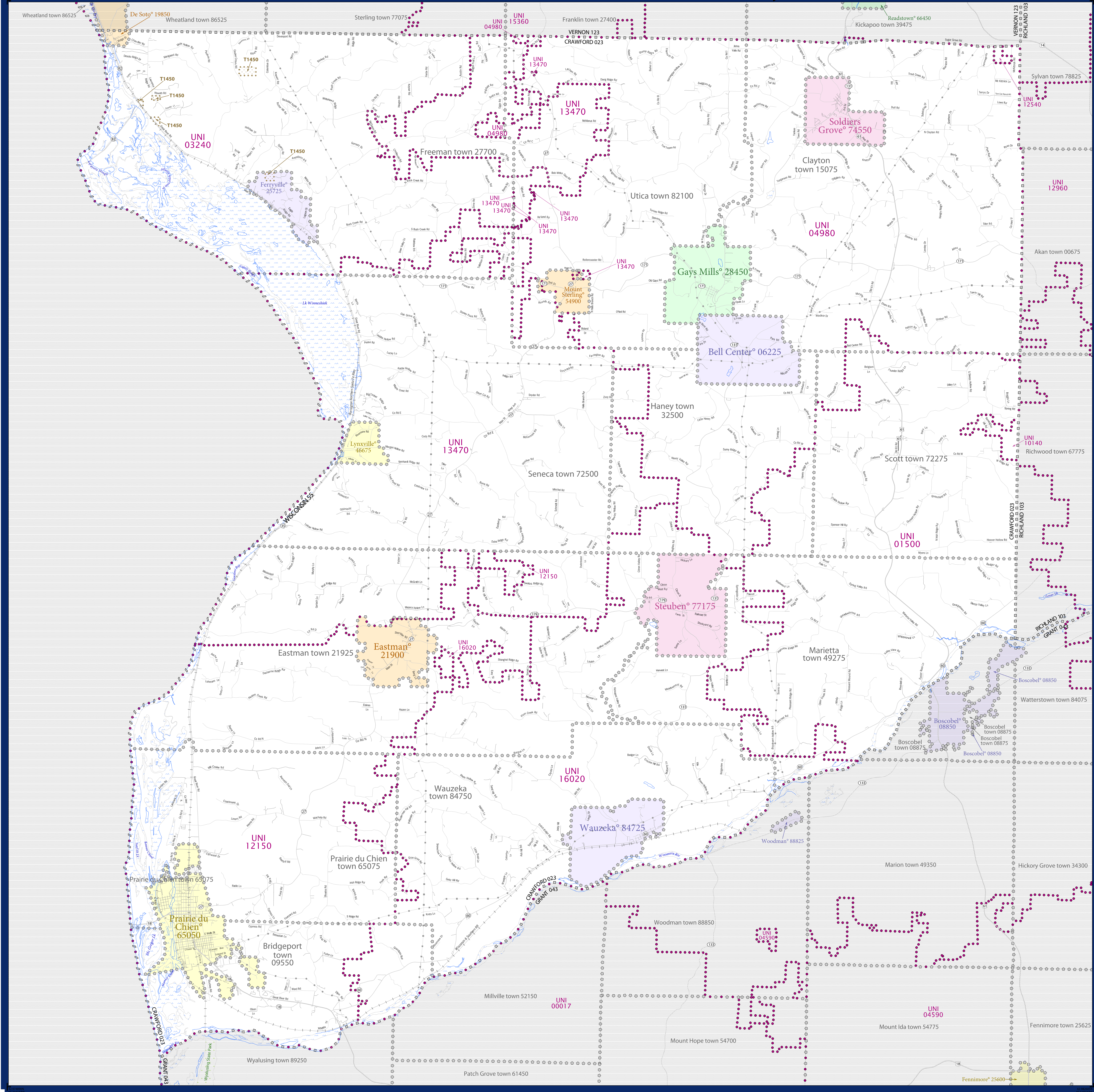


SCHOOL DISTRICT REFERENCE MAP (2010 CENSUS): Crawford County, WI



LEGEND

SYMBOL DESCRIPTION	SYMBOL	SYMBOL DESCRIPTION	SYMBOL
Federal American Indian Reservation	[Dotted Pattern]	Water Body	[Blue Fill]
Off-Reservation Trust Land	[Dotted Pattern]	Swamp or Marsh	[Green Fill]
State American Indian Reservation	[Dotted Pattern]	Glacier	[Blue Fill]
Alaska Native Regional Corporation	[Dotted Pattern]	Military	[Green Fill]
State (or statistically equivalent entity)	[Dotted Pattern]	National or State Park, Forest, or Recreation Area	[Green Fill]
County (or statistically equivalent entity)	[Dotted Pattern]	Inset Area	[Grey Fill]
Minor Civil Division (MCD) ^{1,2}	[Dotted Pattern]	Outside Subject Area	[Grey Fill]
Consolidated City	[Dotted Pattern]		
Incorporated Place ³	[Dotted Pattern]		
Census Designated Place (CDP) ³	[Dotted Pattern]		
Unified School District	[Purple Dotted Line]		
Secondary School District	[Orange Dotted Line]		
Elementary School District	[Green Dotted Line]		

Where state, county, and/or MCD boundaries coincide, the map shows the boundary symbol for only the highest-ranking of these boundaries.

1 A "*" following an MCD name denotes a false MCD. A "*" following a place name indicates that a false MCD exists with the same name and FIPS code as the place; the false MCD label is not shown.

2 MCD boundaries are shown in the following states in which MCDs have functioning governments: Connecticut, Maine, Massachusetts, Michigan, Minnesota, New Hampshire, New Jersey, New York, Pennsylvania, Rhode Island, Vermont, and Wisconsin.

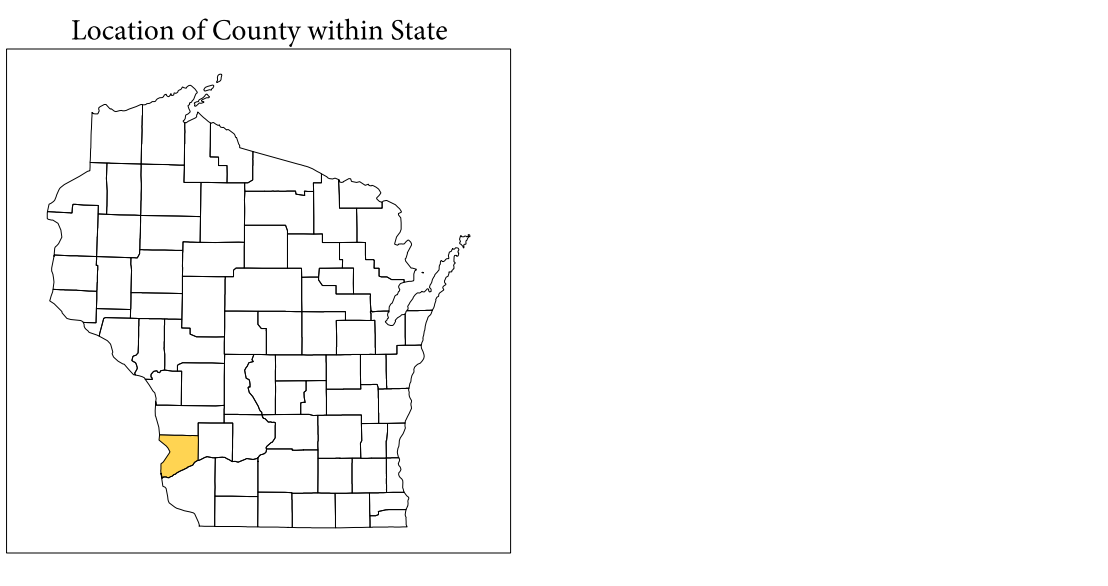
3 Place label color correlates to the place fill color.

OFF-RESERVATION TRUST LAND NAMES

T1450 Ho-Chunk Nation

SCHOOL DISTRICTS WITHIN COUNTY

TYPE	CODE	NAME
UNI	01500	Boscobel Area School District
UNI	03240	De Soto Area School District
UNI	04980	North Crawford School District
UNI	10140	Riverdale School District
UNI	12150	Prairie du Chien Area School District
UNI	12540	Kickapoo Area School District
UNI	13470	Seneca School District
UNI	16020	Wauzeka-Strouben School District



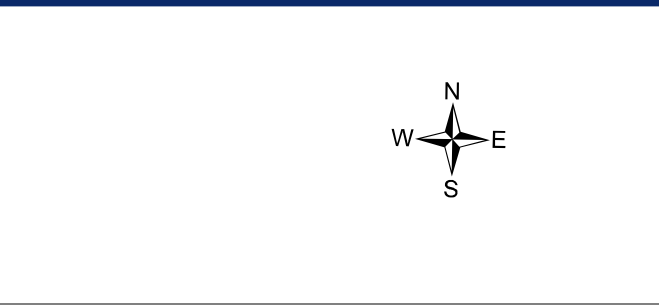
All legal boundaries and names are as of January 1, 2010. The boundaries shown on this map are for Census Bureau statistical data collection and tabulation purposes only; their depiction and designation for statistical purposes does not constitute a determination of jurisdictional authority or rights of ownership or entitlement.

Geographic: Vintage: 2010 Census (reference date: January 1, 2010)
 Data Source: U.S. Census Bureau's MAINTIGR database (T48105155)
 Map Created by Geography Division: December 12, 2010

U.S. DEPARTMENT OF COMMERCE Economics and Statistics Administration U.S. Census Bureau

Projection: Albers Equal Area Conic
 Datum: NAD83
 Spheroid: GRS 80
 1st Standard Parallel: 43 18 31
 2nd Standard Parallel: 46 30 31
 Central Meridian: -89 34 05
 Latitude of Projection's Origin: 42 30 25
 False Easting: 0
 False Northing: 0

The plotted map scale is 1:88888



PARENT SHEET 1
 Total Sheets: 1
 Index Sheets: 0
 Parent Sheets: 1
 Inset Sheets: 0

NAME: Crawford County (023)
 ENTITY TYPE: County or statistically equivalent entity
 ST: Wisconsin (55)

2010 SD MAP (PARENT)
 2010502001