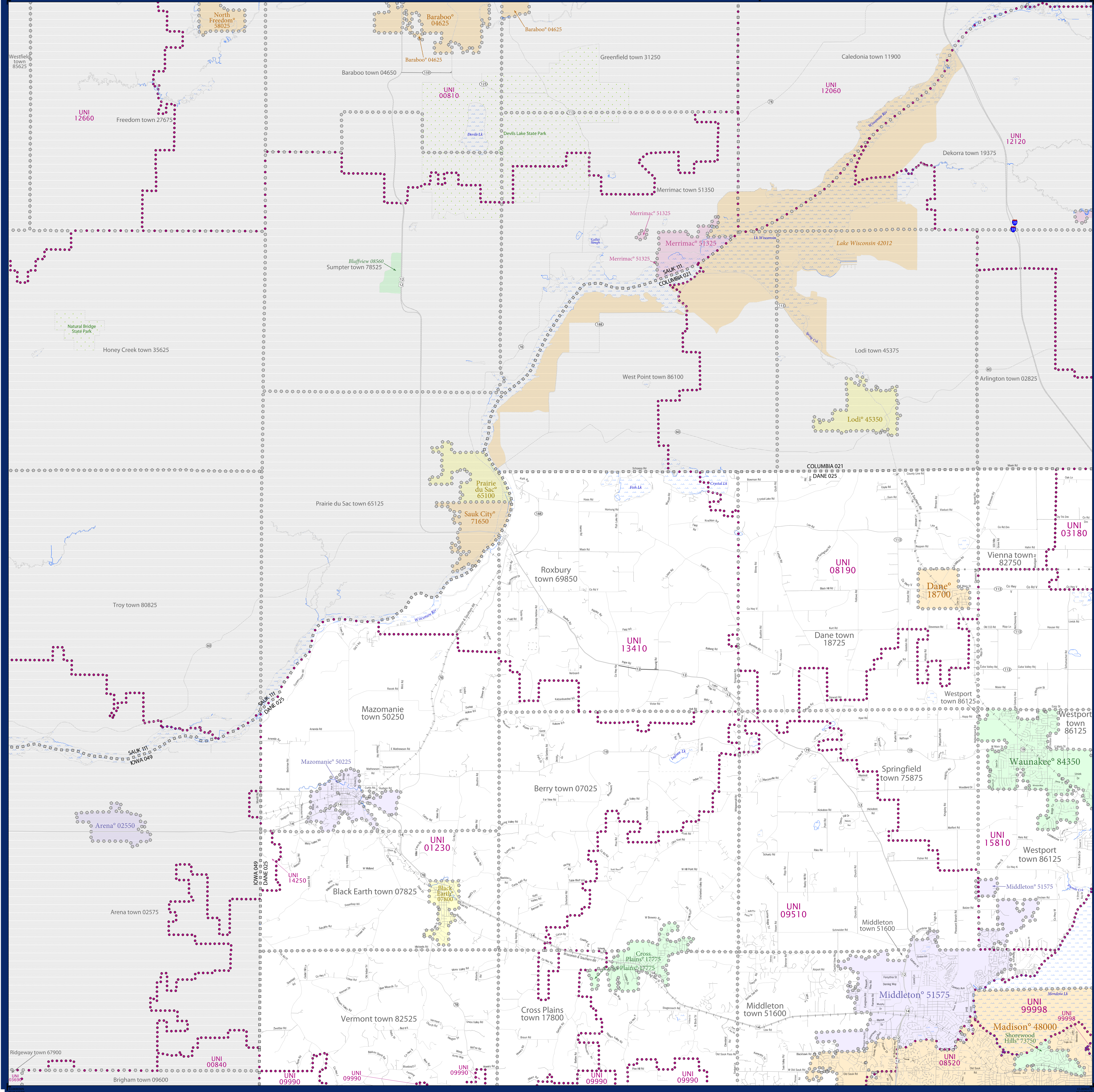


SCHOOL DISTRICT REFERENCE MAP (2010 CENSUS): Dane County, WI



LEGEND

SYMBOL DESCRIPTION	SYMBOL	SYMBOL DESCRIPTION	SYMBOL
Federal American Indian Reservation	[Pattern]	Water Body	[Symbol]
Off-Reservation Trust Land	[Pattern]	Swamp or Marsh	[Symbol]
State American Indian Reservation	[Pattern]	Glacier	[Symbol]
Alaska Native Regional Corporation	[Pattern]	Military	[Symbol]
State (or statistically equivalent entity)	[Pattern]	National or State Park, Forest, or Recreation Area	[Symbol]
County (or statistically equivalent entity)	[Pattern]	Inset Area	[Symbol]
Minor Civil Division (MCD) ^{1,2}	[Pattern]	Outside Subject Area	[Symbol]
Consolidated City	[Pattern]		
Incorporated Place ³	[Pattern]		
Census Designated Place (CDP) ³	[Pattern]		
Unified School District	[Color]		
Secondary School District	[Color]		
Elementary School District	[Color]		

Where state, county, and/or MCD boundaries coincide, the map shows the boundary symbol for only the highest-ranking of these boundaries.

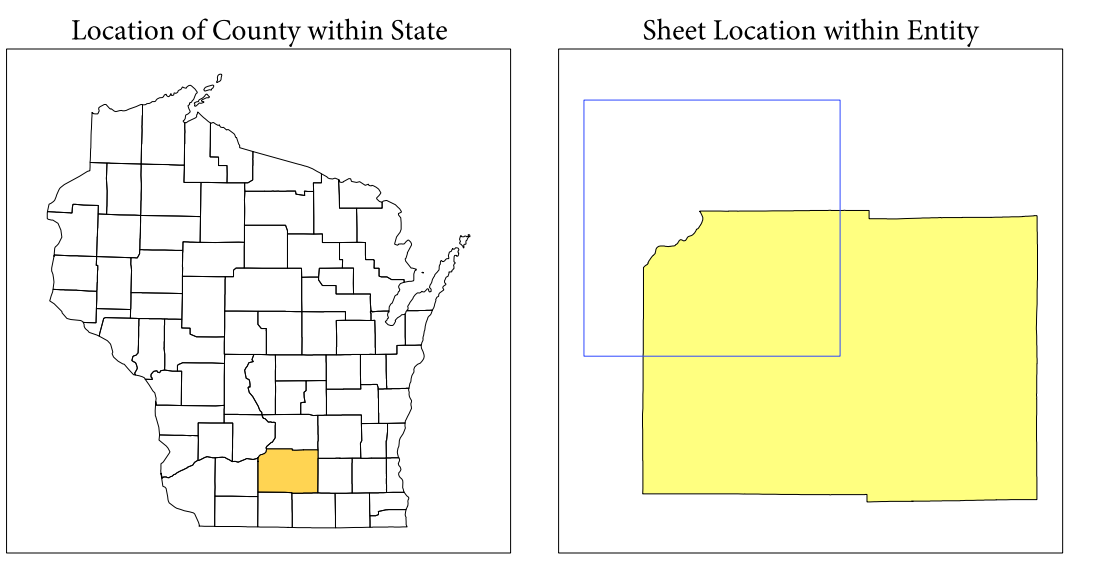
1 A "*" following an MCD name denotes a false MCD. A "*" following a place name indicates that a false MCD exists with the same name and FIPS code as the place; the false MCD label is not shown.

2 MCD boundaries are shown in the following states in which MCDs have functioning governments: Connecticut, Maine, Massachusetts, Michigan, Minnesota, New Hampshire, New Jersey, New York, Pennsylvania, Rhode Island, Vermont, and Wisconsin.

3 Place label color correlates to the place fill color.

SCHOOL DISTRICTS WITHIN COUNTY

TYPE	CODE	NAME
UNI	01250	Wisconsin Heights School District
UNI	03180	DeForest Area School District
UNI	08100	Lodi School District
UNI	08520	Madison Metropolitan School District
UNI	09210	Middleton-Cross Plains School District
UNI	09990	Mount Horeb Area School District
UNI	13410	Sauk Prairie School District
UNI	14250	River Valley School District
UNI	15810	Waunakee Community School District
UNI	99998	School District Not Defined (Water)



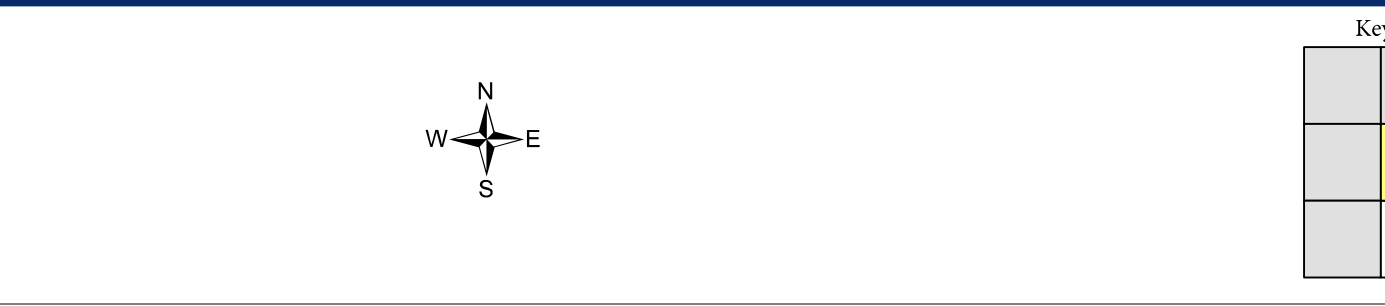
All legal boundaries and names are as of January 1, 2010. The boundaries shown on this map are for Census Bureau's statistical data collection and tabulation purposes only; their depiction and designation for statistical purposes does not constitute a determination of jurisdictional authority or rights of ownership or entitlement.

Geographic: Vintage: 2010 Census (reference date: January 1, 2010)
 Data Source: U.S. Census Bureau's MA7/TIGER database (TAB100153)
 Map Created by Geography Division: January 14, 2011

U.S. DEPARTMENT OF COMMERCE Economics and Statistics Administration U.S. Census Bureau

Projection: Albers Equal Area Conic
 Datum: NAD83
 Spheroid: GRS 80
 1st Standard Parallel: 43 18 27
 2nd Standard Parallel: 46 30 33
 Central Meridian: -89 34 05
 Latitude of Projection's Origin: 42 30 25
 False Easting: 0
 False Northing: 0

The plotted map scale is 1:600000



NAME: Dane County (025)
 ENTITY TYPE: County or statistically equivalent entity
 ST: Wisconsin (55)

2010 SD MAP (PARENT)
 2010050001