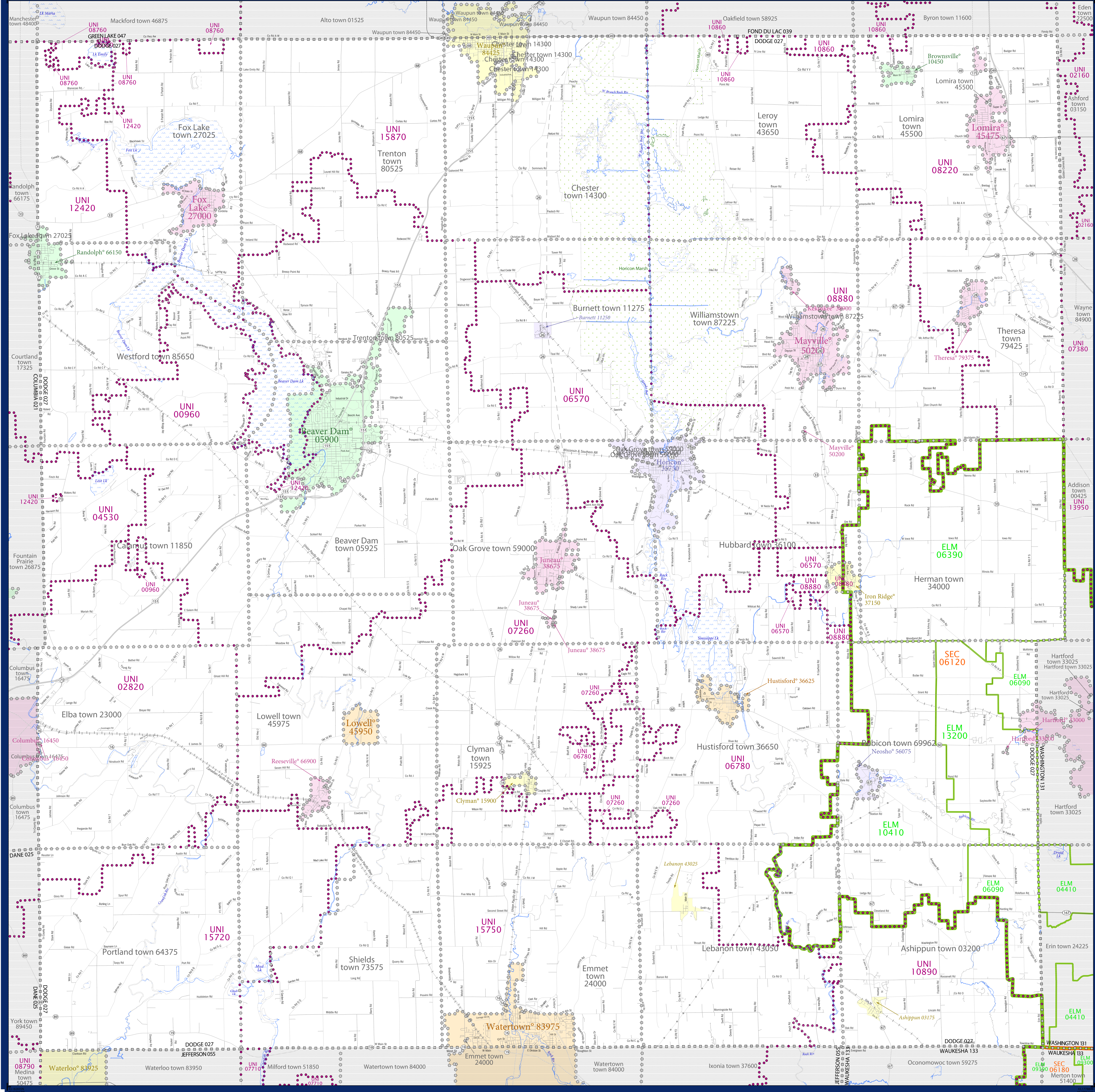


SCHOOL DISTRICT REFERENCE MAP (2010 CENSUS): Dodge County, WI



SYMBOL DESCRIPTION		LEGEND	
	Federal American Indian Reservation		L'ANSE RES 1880
	Off-Reservation Trust Land		T1880
	State American Indian Reservation		Tama Res 4125
	Alaska Native Regional Corporation		NANA ANRC 52120
	State (or statistically equivalent entity)		NEW YORK 36
	County (or statistically equivalent entity)		ERIE 029
	Minor Civil Division (MCD) ^{1,2}		Bristol town 07485
	Consolidated City		MILFORD 47500
	Incorporated Place ^{1,3}		Davis 18100
	Census Designated Place (CDP) ³		Incline Village 35100
	Unified School District		UNI 03370
	Secondary School District		SEC 99965
	Elementary School District		ELM 02220

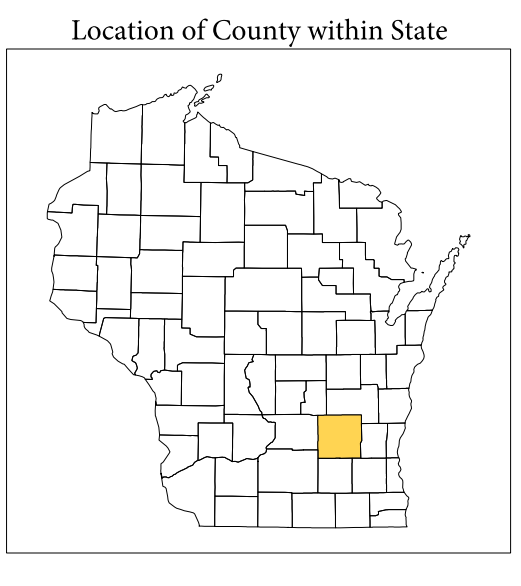
Where state, county, and/or MCD boundaries coincide, the map shows the boundary symbol for only the highest-ranking of these boundaries.

1 A "*" following an MCD name denotes a false MCD. A "*" following a place name indicates that a false MCD exists with the same name and FIPS code as the place; the false MCD label is not shown.

2 MCD boundaries are shown in the following states in which MCDs have functioning governments: Connecticut, Maine, Massachusetts, Michigan, Minnesota, New Hampshire, New Jersey, New York, Pennsylvania, Rhode Island, Vermont, and Wisconsin.

3 Place label color correlates to the place fill color.

SCHOOL DISTRICTS WITHIN COUNTY		
TYPE	CODE	NAME
ELM	06000	Hartford Joint No. 1 School District
ELM	06390	Herman No. 22 School District
ELM	10410	Neosho Joint No. 3 School District
ELM	13200	Rubicon Joint No. 6 School District
SEC	06100	Hartford Union High School District
UNI	00900	Beaver Dam School District
UNI	02820	Columbus School District
UNI	04530	Fall River School District
UNI	06570	Huron School District
UNI	06780	Hustisford School District
UNI	07260	Dodge School District
UNI	08220	Lomira School District
UNI	08880	Madison School District
UNI	09960	Mayville School District
UNI	10890	Dodge School District
UNI	12420	Rensselaer School District
UNI	15720	Waterloo School District
UNI	15750	Waterloo School District
UNI	15870	Waupun School District



All legal boundaries and names are as of January 1, 2010. The boundaries shown on this map are for Census Bureau's statistical data collection and tabulation purposes only; their depiction and designation for statistical purposes does not constitute a determination of jurisdictional authority or rights of ownership or entitlement.

Geographic: Vintage: 2010 Census (reference date: January 1, 2010)
 Data Source: U.S. Census Bureau's MAINTIGR database (TAB000153)
 Map Created by Geography Division: December 12, 2010

Projection: Albers Equal Area Conic
 Datum: NAD 83
 Spheroid: GRS 80
 1st Standard Parallel: 43 18 27
 2nd Standard Parallel: 46 30 33
 Central Meridian: -89 34 05
 Latitude of Projection's Origin: 42 30 25
 False Easting: 0
 False Northing: 0

The plotted map scale is 1:71,100

Scale bar showing 0 to 10 kilometers and 0 to 10 miles.

PARENT SHEET 1
 Total Sheets: 1
 Index Sheets: 0
 Parent Sheets: 1
 Inset Sheets: 0

NAME: Dodge County (027)
 ENTITY TYPE: County or statistically equivalent entity
 ST: Wisconsin (55)