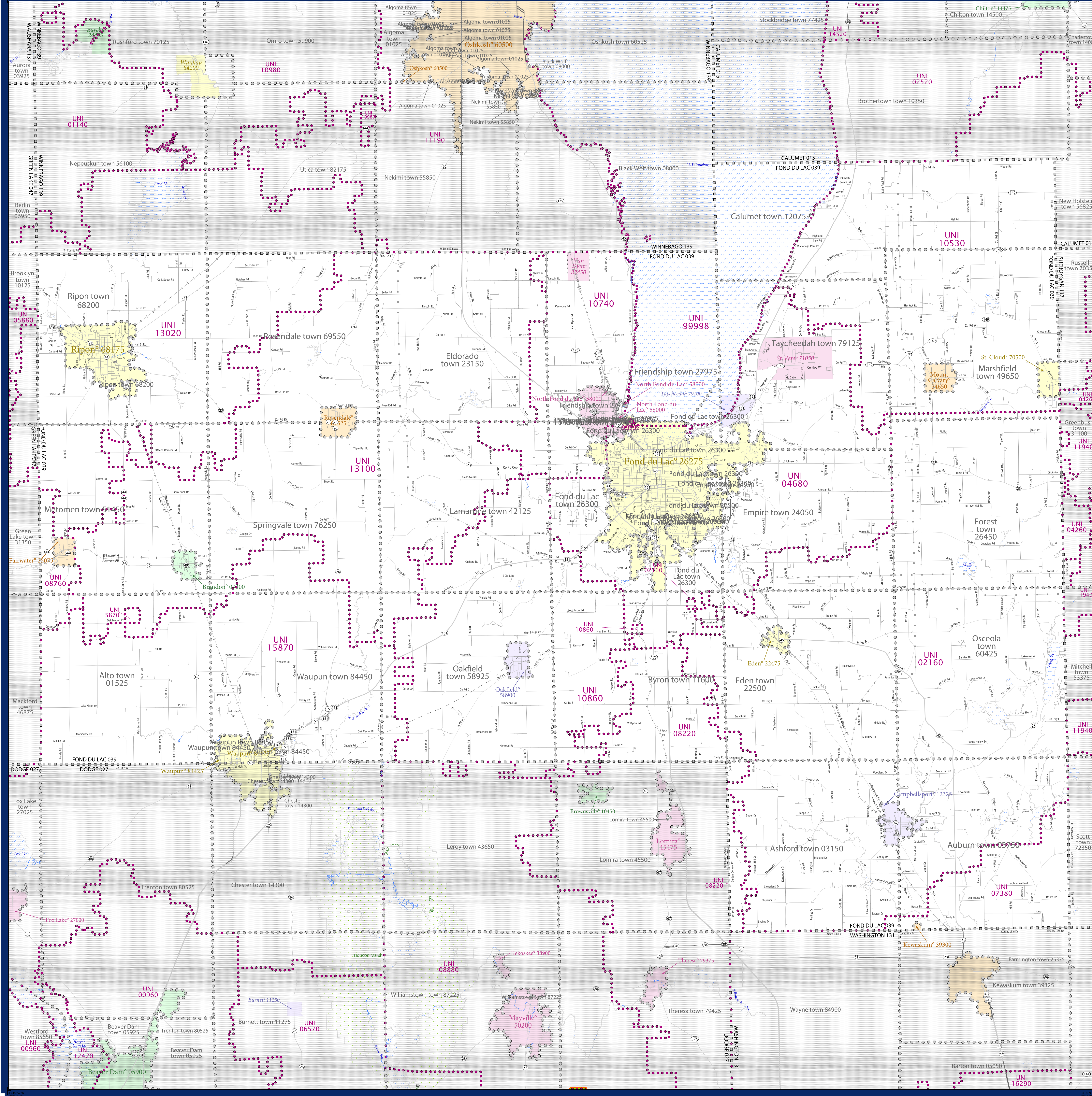


SCHOOL DISTRICT REFERENCE MAP (2010 CENSUS): Fond du Lac County, WI



SYMBOL DESCRIPTION		SYMBOL		LEGEND	
Federal American Indian Reservation	[Symbol]	L'ANSE RES 1880	[Symbol]	T1880	[Symbol]
Off-Reservation Trust Land	[Symbol]	Tama Res 4125	[Symbol]	NANA ANRC 52120	[Symbol]
State American Indian Reservation	[Symbol]	NEW YORK 36	[Symbol]	ERIE 029	[Symbol]
Alaska Native Regional Corporation	[Symbol]	Bristol town 07485	[Symbol]	MILFORD 47500	[Symbol]
State (or statistically equivalent entity)	[Symbol]	Davis 18100	[Symbol]	Incline Village 35100	[Symbol]
County (or statistically equivalent entity)	[Symbol]	UNI 03370	[Symbol]	SEC 99965	[Symbol]
Minor Civil Division (MCD) ^{1,2}	[Symbol]	ELM 02220	[Symbol]		
Consolidated City	[Symbol]				
Incorporated Place ^{1,3}	[Symbol]				
Census Designated Place (CDP) ¹	[Symbol]				
Unified School District	[Symbol]				
Secondary School District	[Symbol]				
Elementary School District	[Symbol]				

Where state, county, and/or MCD boundaries coincide, the map shows the boundary symbol for only the highest-ranking of these boundaries.

1 A "*" following an MCD name denotes a false MCD. A "*" following a place name indicates that a false MCD exists with the same name and FIPS code as the place; the false MCD label is not shown.

2 MCD boundaries are shown in the following states in which MCDs have functioning governments: Connecticut, Maine, Massachusetts, Michigan, Minnesota, New Hampshire, New Jersey, New York, Pennsylvania, Rhode Island, Vermont, and Wisconsin.

3 Place label color correlates to the place fill color.

SCHOOL DISTRICTS WITHIN COUNTY	TYPE	CODE	NAME
Camdenport School District	UNI	02150	Camdenport School District
Fond du Lac School District	UNI	04680	Fond du Lac School District
Kewaskum School District	UNI	07380	Kewaskum School District
Lomira School District	UNI	08220	Lomira School District
Marquette School District	UNI	08750	Marquette School District
New Holstein School District	UNI	10530	New Holstein School District
North Fond du Lac School District	UNI	10740	North Fond du Lac School District
Oakfield School District	UNI	10860	Oakfield School District
Ripon Area School District	UNI	13820	Ripon Area School District
Rosendale-Brandon School District	UNI	13100	Rosendale-Brandon School District
Waupun School District	UNI	13870	Waupun School District
School District Not Defined	UNI	99997	School District Not Defined (Water)
School District Not Defined	UNI	99998	School District Not Defined (Water)



All legal boundaries and names are as of January 1, 2010. The boundaries shown on this map are for Census Bureau statistical data collection and tabulation purposes only; their depiction and designation for statistical purposes does not constitute a determination of jurisdictional authority or rights of ownership or entitlement.

Geographic: Vintage: 2010 Census (reference date: January 1, 2010)
 Data Source: U.S. Census Bureau's MAINTIGR database (TAB00153)
 Map Created by Geography Division: December 12, 2010

Projection: Albers Equal Area Conic
 Datum: NAD 83
 Spheroid: GRS 80
 1st Standard Parallel: 43 18 27
 2nd Standard Parallel: 46 30 31
 Central Meridian: -89 34 05
 Latitude of Projection's Origin: 42 30 25
 False Easting: 0
 False Northing: 0

Scale: 1:100,000
 0 2 4 6 8 10 Miles

PARENT SHEET 1
 Total Sheets: 1
 Index Sheets: 0
 Parent Sheets: 1
 Inset Sheets: 0

NAME: Fond du Lac County (039)
 ENTITY TYPE: County or statistically equivalent entity
 ST: Wisconsin (55)

2010 SD MAP (PARENT)
 20100509001