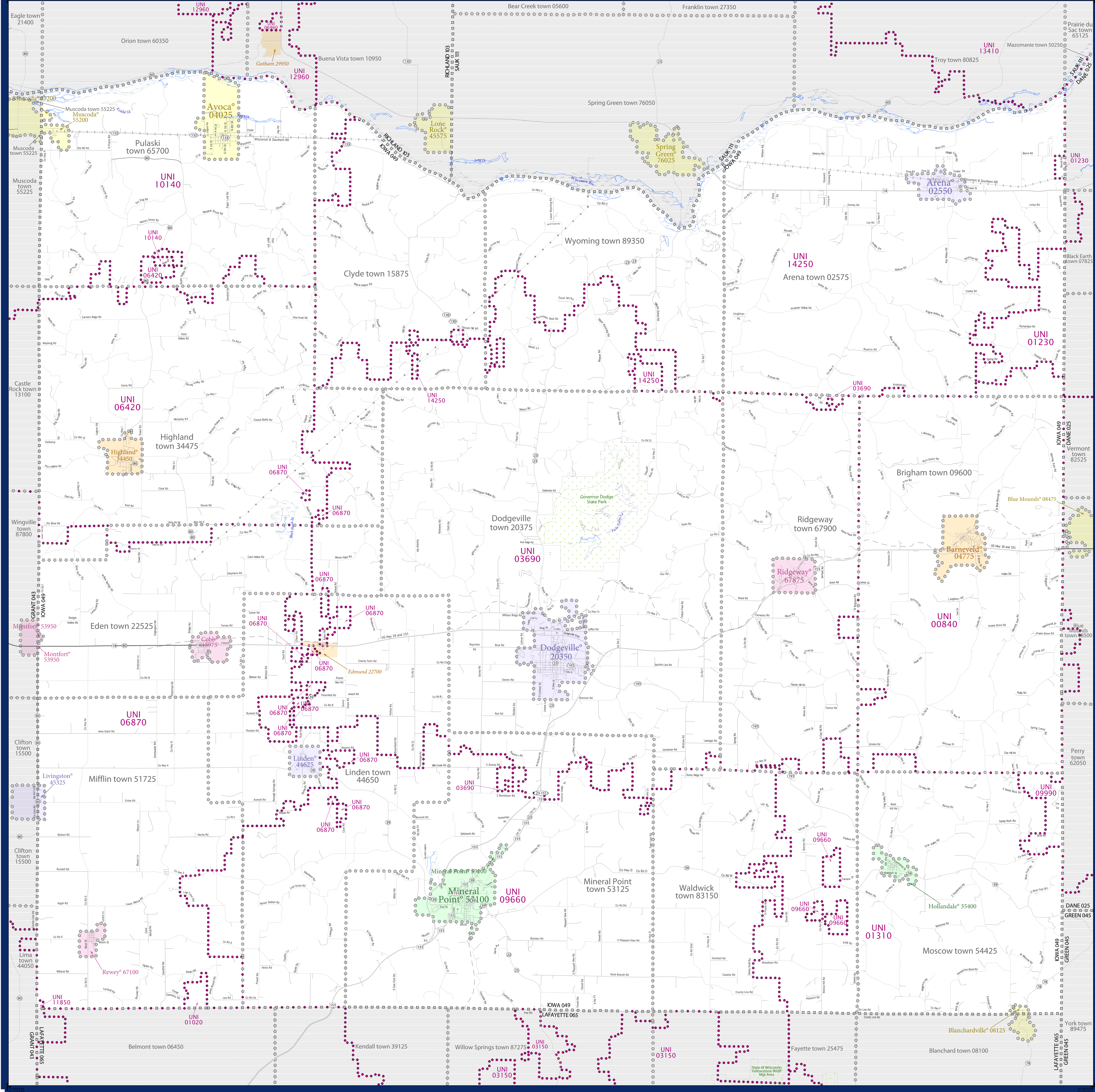


SCHOOL DISTRICT REFERENCE MAP (2010 CENSUS): Iowa County, WI



| SYMBOL DESCRIPTION | | LEGEND | |
|--------------------|---|--------|-----------------------|
| | Federal American Indian Reservation | | L'ANSE RES 1880 |
| | Off-Reservation Trust Land | | T1880 |
| | State American Indian Reservation | | Tama Res 4125 |
| | Alaska Native Regional Corporation | | NANA ANRC 52120 |
| | State (or statistically equivalent entity) | | NEW YORK 36 |
| | County (or statistically equivalent entity) | | ERIE 029 |
| | Minor Civil Division (MCD) ^{1,2} | | Bristol town 07485 |
| | Consolidated City | | MILFORD 47500 |
| | Incorporated Place ^{1,3} | | Davis 18100 |
| | Census Designated Place (CDP) ³ | | Incline Village 35100 |
| | Unified School District | | UNI 03370 |
| | Secondary School District | | SEC 99965 |
| | Elementary School District | | ELM 02220 |

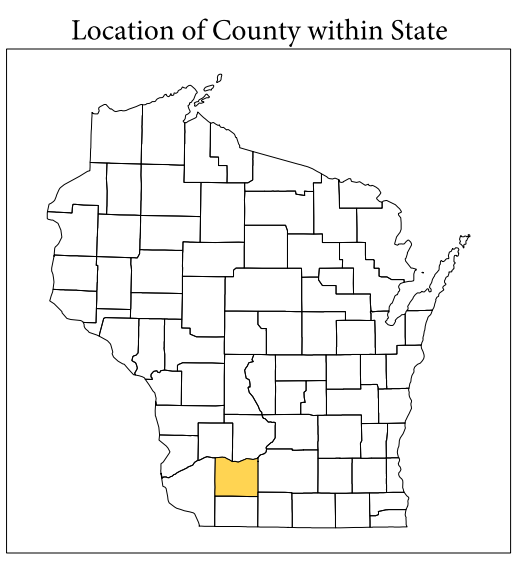
Where state, county, and/or MCD boundaries coincide, the map shows the boundary symbol for only the highest-ranking of these boundaries.

1 A "*" following an MCD name denotes a false MCD. A "*" following a place name indicates that a false MCD exists with the same name and FIPS code as the place; the false MCD label is not shown.

2 MCD boundaries are shown in the following states in which MCDs have functioning governments: Connecticut, Maine, Massachusetts, Michigan, Minnesota, New Hampshire, New Jersey, New York, Pennsylvania, Rhode Island, Vermont, and Wisconsin.

3 Place label color correlates to the place fill color.

| TYPE | CODE | NAME |
|------|-------|-----------------------------------|
| UNI | 01020 | Barneveld School District |
| UNI | 01200 | Belmont Community School District |
| UNI | 01230 | Wisconsin Heights School District |
| UNI | 01310 | Pecatonica Area School District |
| UNI | 03600 | Dodgeville School District |
| UNI | 06420 | Highland School District |
| UNI | 06870 | Iowa Grant School District |
| UNI | 09660 | Mineral Point School District |
| UNI | 09990 | Mount Hope Area School District |
| UNI | 10140 | Riverdale School District |
| UNI | 11850 | Platteville School District |
| UNI | 14250 | River Valley School District |



All legal boundaries and names are as of January 1, 2010. The boundaries shown on this map are for census bureau statistical data collection and tabulation purposes only; their depiction and designation for statistical purposes does not constitute a determination of jurisdictional authority or rights of ownership or entitlement.

Geographic Vintage: 2010 Census (reference date: January 1, 2010)
 Data Source: U.S. Census Bureau's MAINTIGR database (TAB00153)
 Map Created by Geography Division: December 12, 2010

U.S. DEPARTMENT OF COMMERCE Economics and Statistics Administration U.S. Census Bureau

Projection: Albers Equal Area Conic
 Datum: NAD83
 Spheroid: GRS 80
 1st Standard Parallel: 43 18 27
 2nd Standard Parallel: 46 30 33
 Central Meridian: -89 34 05
 Latitude of Projection's Origin: 42 30 25
 False Easting: 0
 False Northing: 0

10 kilometers

The plotted map scale is 1:80000

USCENSUSBUREAU

PARENT SHEET 1

Total Sheets: 1
 Index Sheets: 0
 Parent Sheets: 1
 Inset Sheets: 0

NAME: Iowa County (049)
 ENTITY TYPE: County or statistically equivalent entity
 ST: Wisconsin (55)

2010 SD MAP (PARENT)
 2010504001