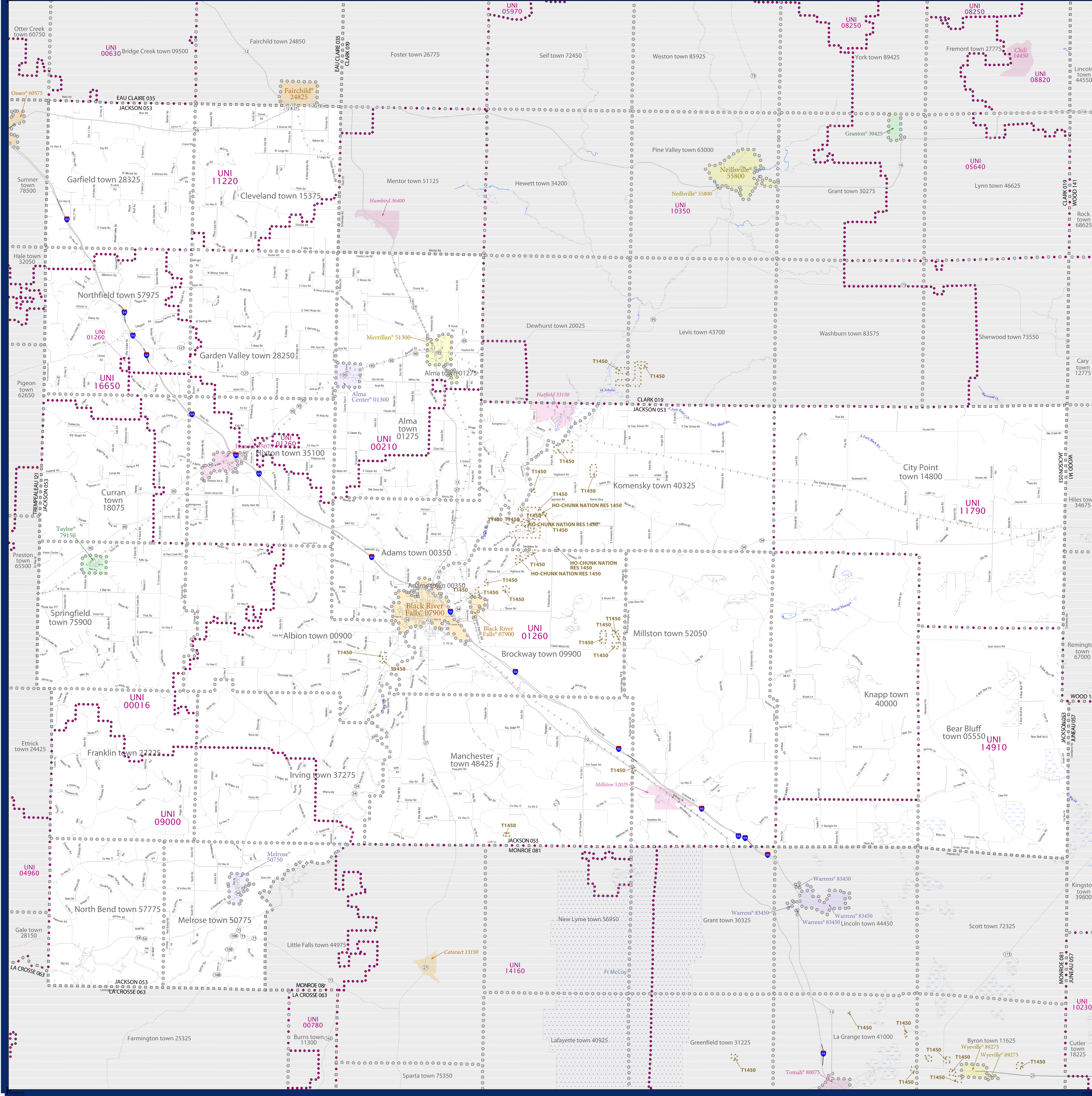


SCHOOL DISTRICT REFERENCE MAP (2010 CENSUS): Jackson County, WI



SYMBOL DESCRIPTION		LEGEND	
[Symbol]	Federal American Indian Reservation	[Symbol]	L'ANSE RES 1880
[Symbol]	Off-Reservation Trust Land	[Symbol]	T1880
[Symbol]	State American Indian Reservation	[Symbol]	Tama Res 4125
[Symbol]	Alaska Native Regional Corporation	[Symbol]	NANA ANRC 52120
[Symbol]	State (or statistically equivalent entity)	[Symbol]	NEW YORK 36
[Symbol]	County (or statistically equivalent entity)	[Symbol]	ERIE 029
[Symbol]	Minor Civil Division (MCD) ^{1,2}	[Symbol]	Bristol town 07485
[Symbol]	Consolidated City	[Symbol]	MILFORD 47500
[Symbol]	Incorporated Place ³	[Symbol]	Davis 18100
[Symbol]	Census Designated Place (CDP) ³	[Symbol]	Incline Village 35100
[Symbol]	Unified School District	[Symbol]	UNI 03370
[Symbol]	Secondary School District	[Symbol]	SEC 99955
[Symbol]	Elementary School District	[Symbol]	ELM 02220

Where state, county, and/or MCD boundaries coincide, the map shows the boundary symbol for only the highest-ranking of these boundaries.

1 A "*" following an MCD name denotes a false MCD. A "*" following a place name indicates that a false MCD exists with the same name and FIPS code as the place; the false MCD label is not shown.

2 MCD boundaries are shown in the following states in which MCDs have functioning governments: Connecticut, Maine, Massachusetts, Michigan, Minnesota, New Hampshire, New Jersey, New York, Pennsylvania, Rhode Island, Vermont, and Wisconsin.

3 Place label color correlates to the place fill color.

OFF-RESERVATION TRUST LAND NAMES

T1450 Ho-Chunk Nation

SCHOOL DISTRICTS WITHIN COUNTY

TYPE	CODE	NAME
UNI	00010	Alma Center School District
UNI	00210	Black River Falls School District
UNI	01260	Melrose-Mindoro School District
UNI	09000	Oxone-Fairchild School District
UNI	11200	Pittsville School District
UNI	11790	Tomah Area School District
UNI	16650	Whitehall School District

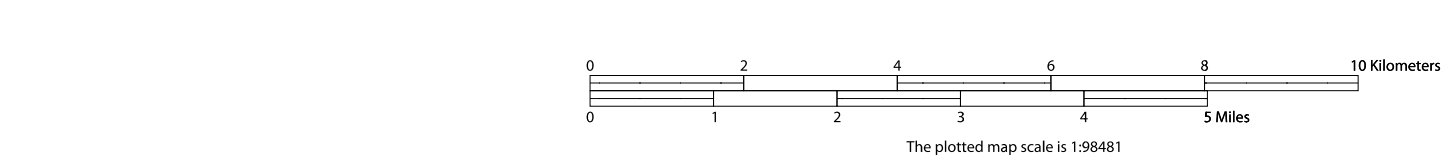


All legal boundaries and names are as of January 1, 2010. The boundaries shown on this map are for Census Bureau's statistical data collection and tabulation purposes only; their depiction and designation for statistical purposes does not constitute a determination of jurisdictional authority or rights of ownership or entitlement.

Geographic Vintage: 2010 Census (reference date: January 1, 2010)
 Data Source: U.S. Census Bureau's MAINTIGR database (TAB00155)
 Map Created by Geography Division: December 12, 2010

U.S. DEPARTMENT OF COMMERCE Economics and Statistics Administration U.S. Census Bureau

Projection: Albers Equal Area Conic
 Datum: NAD 83
 Spheroid: GRS 80
 1st Standard Parallel: 43 18 27
 2nd Standard Parallel: 46 30 33
 Central Meridian: -89 34 05
 Latitude of Projection's Origin: 42 30 25
 False Easting: 0
 False Northing: 0



USCENSUSBUREAU

PARENT SHEET 1
 Total Sheets: 1
 Index Sheets: 0
 Parent Sheets: 1
 Inset Sheets: 0

NAME: Jackson County (053)
 ENTITY TYPE: County or statistically equivalent entity
 ST: Wisconsin (55)

2010 SD MAP (PARENT)
 20101001001