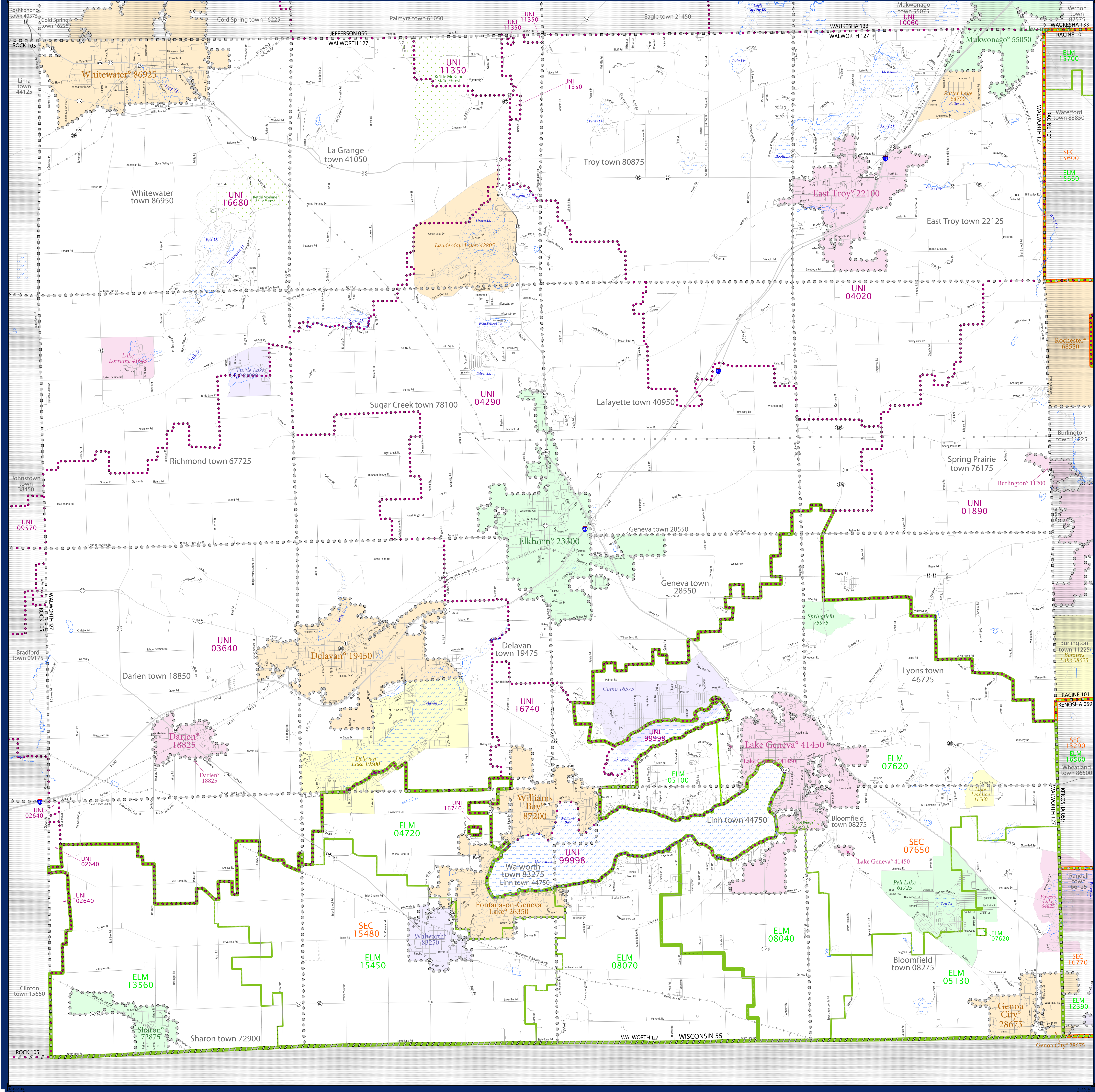


SCHOOL DISTRICT REFERENCE MAP (2010 CENSUS): Walworth County, WI



SYMBOL DESCRIPTION		LEGEND	
	Federal American Indian Reservation		L'ANSE RES 1880
	Off-Reservation Trust Land		T1880
	State American Indian Reservation		Tama Res 4125
	Alaska Native Regional Corporation		NANA ANRC 52120
	State (or statistically equivalent entity)		NEW YORK 36
	County (or statistically equivalent entity)		ERIE 029
	Minor Civil Division (MCD)		Bristol town 07485
	Consolidated City		MILFORD 47500
	Incorporated Place		Davis 18100
	Census Designated Place (CDP)		Incline Village 35100
	Unified School District		UNI 03370
	Secondary School District		SEC 99965
	Elementary School District		ELM 02220

DESCRIPTION	SYMBOL	DESCRIPTION	SYMBOL
Interstate		Water Body	
U.S. Highway		Swamp or Marsh	
State Highway		Glacier	
Other Road		Military	
4WD Trail, Steep, Alley, Walkway, or Ferry		National or State Park, Forest, or Recreation Area	
Railroad		Inset Area	
Pipeline or Power Line		Outside Subject Area	
Ridge or Fence			
Property Line			
Nonvisible Boundary or Feature Not Elsewhere Classified			

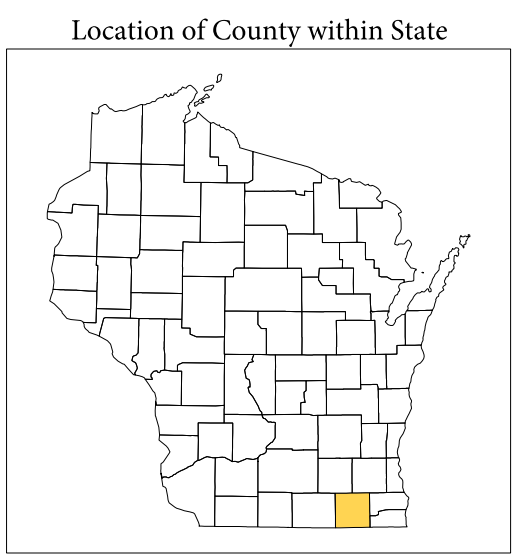
Where state, county, and/or MCD boundaries coincide, the map shows the boundary symbol for only the highest-ranking of these boundaries.

1 A "*" following an MCD name denotes a false MCD. A "*" following a place name indicates that a false MCD exists with the same name and FIPS code as the place; the false MCD label is not shown.

2 MCD boundaries are shown in the following states in which MCDs have functioning governments: Connecticut, Maine, Massachusetts, Michigan, Minnesota, New Hampshire, New Jersey, New York, Pennsylvania, Rhode Island, Vermont, and Wisconsin.

3 Place label color correlates to the place fill color.

TYPE	CODE	NAME
ELM	04720	Fontana Joint No. 8 School District
ELM	05100	Geneva Joint No. 4 School District
ELM	05130	Geneva Joint No. 2 School District
ELM	07620	Lake Geneva Joint No. 1 School District
ELM	08040	Linn Joint No. 4 School District
ELM	08070	Linn Joint No. 5 School District
ELM	13560	Sharon Joint No. 11 School District
ELM	15450	Walworth Joint No. 1 School District
SEC	07650	Lake Geneva Genoa City Union High School District
SEC	15480	Big Foot Union High School District
UNI	01890	Burlington Area School District
UNI	02640	Clinton Community School District
UNI	03640	Delavan Area School District
UNI	04020	East Troy Community School District
UNI	04290	Elkhorn Area School District
UNI	11350	Palmyra Eagle Area School District
UNI	16680	Whitewater School District
UNI	16740	Williams Bay School District
UNI	99998	School District Not Defined (Water)



All legal boundaries and names are as of January 1, 2010. The boundaries shown on this map are for Census Bureau statistical data collection and tabulation purposes only; their depiction and designation for statistical purposes does not constitute a determination of jurisdictional authority or rights of ownership or entitlement.

Geographic: Vintage: 2010 Census (reference date: January 1, 2010)
 Data Source: U.S. Census Bureau's MAINTIGR database (TAB100153)
 Map Created by Geography Division: January 13, 2011

U.S. DEPARTMENT OF COMMERCE Economics and Statistics Administration U.S. Census Bureau

Projection: Albers Equal Area Conic
 Datum: NAD83
 Spheroid: GRS 80
 1st Standard Parallel: 43 18 27
 2nd Standard Parallel: 46 30 33
 Central Meridian: -89 34 05
 Latitude of Projection's Origin: 42 30 25
 False Easting: 0
 False Northing: 0

The plotted map scale is 1:50000



PARENT SHEET 1
 Total Sheets: 1
 Index Sheets: 0
 Parent Sheets: 0
 Inset Sheets: 0

NAME: Walworth County (127)
 ENTITY TYPE: County or statistically equivalent entity
 ST: Wisconsin (55)

2010 SD MAP (PARENT)
 20151127001