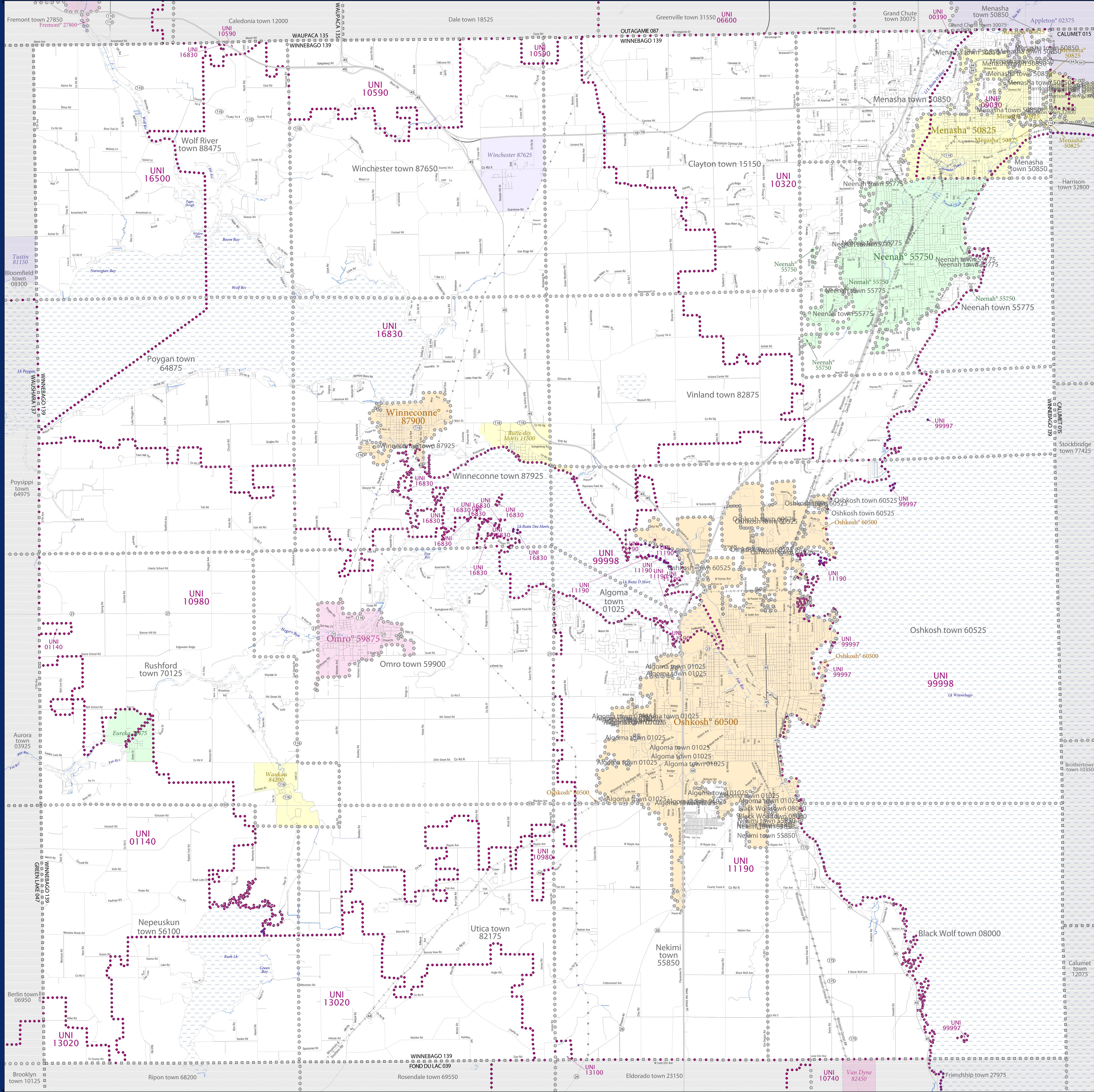


# SCHOOL DISTRICT REFERENCE MAP (2010 CENSUS): Winnebago County, WI



### LEGEND

SYMBOL DESCRIPTION	SYMBOL	SYMBOL DESCRIPTION	SYMBOL
Federal American Indian Reservation	[Dotted Pattern]	Water Body	[Blue Area]
Off-Reservation Trust Land	[Dotted Pattern]	Swamp or Marsh	[Green Area]
State American Indian Reservation	[Dotted Pattern]	Glacier	[Blue Area]
Alaska Native Regional Corporation	[Dotted Pattern]	Military	[Blue Area]
State (or statistically equivalent entity)	[Dotted Pattern]	National or State Park, Forest, or Recreation Area	[Green Area]
County (or statistically equivalent entity)	[Dotted Pattern]	Inlet Area	[Blue Area]
Minor Civil Division (MCD) <sup>1,2</sup>	[Dotted Pattern]	Outside Subject Area	[Grey Area]
Consolidated City	[Dotted Pattern]	Interstate	[Thick Blue Line]
Incorporated Place <sup>1,3</sup>	[Dotted Pattern]	U.S. Highway	[Thin Blue Line]
Census Designated Place (CDP) <sup>3</sup>	[Dotted Pattern]	State Highway	[Thin Blue Line]
Unified School District	[Purple Dotted Line]	Other Road	[Thin Blue Line]
Secondary School District	[Orange Dotted Line]	4WD Trail, Stoney, Alley, Walkway, or Ferry	[Thin Blue Line]
Elementary School District	[Green Dotted Line]	Railroad	[Thin Blue Line]
		Pipeline or Power Line	[Thin Blue Line]
		Ridge or Fence	[Thin Blue Line]
		Property Line	[Thin Blue Line]
		Nonvisible Boundary or Feature Not Elsewhere Classified	[Thin Blue Line]

Where state, county, and/or MCD boundaries coincide, the map shows the boundary symbol for only the highest-ranking of these boundaries.

- 1 A "\*" following an MCD name denotes a false MCD. A "\*" following a place name indicates that a false MCD exists with the same name and FIPS code as the place; the false MCD label is not shown.
- 2 MCD boundaries are shown in the following states in which MCDs have functioning governments: Connecticut, Maine, Massachusetts, Michigan, Minnesota, New Hampshire, New Jersey, New York, Pennsylvania, Rhode Island, Vermont, and Wisconsin.
- 3 Place label color correlates to the place fill color.

#### SCHOOL DISTRICTS WITHIN COUNTY

TYPE	CODE	NAME
UNI	03370	Appleton Area School District
UNI	01140	Berlin Area School District
UNI	09030	Menasha School District
UNI	10330	Neenah School District
UNI	10990	New London School District
UNI	10980	Omro School District
UNI	11190	Oshkosh Area School District
UNI	13020	Ripon Area School District
UNI	13100	Rosendale-Brandon School District
UNI	16500	Weyauvegon-Fremont School District
UNI	16830	Winneconne-Fremont School District
UNI	99997	School District Not Defined
UNI	99998	School District Not Defined (Water)



All legal boundaries and names are as of January 1, 2010. The boundaries shown on this map are for Census Bureau statistical data collection and tabulation purposes only; their depiction and designation for statistical purposes does not constitute a determination of jurisdictional authority or rights of ownership or entitlement.

Geographic Vintage: 2010 Census (reference date: January 1, 2010)  
 Data Source: U.S. Census Bureau's MAINTIGR database (TAB00055)  
 Map Created by Geography Division: December 13, 2010

Projection: Albers Equal Area Conic  
 Datum: NAD83  
 Spheroid: GRS 80  
 1st Standard Parallel: 43 18 27  
 2nd Standard Parallel: 46 30 33  
 Central Meridian: -89 34 05  
 Latitude of Projection's Origin: 42 30 25  
 False Easting: 0  
 False Northing: 0

