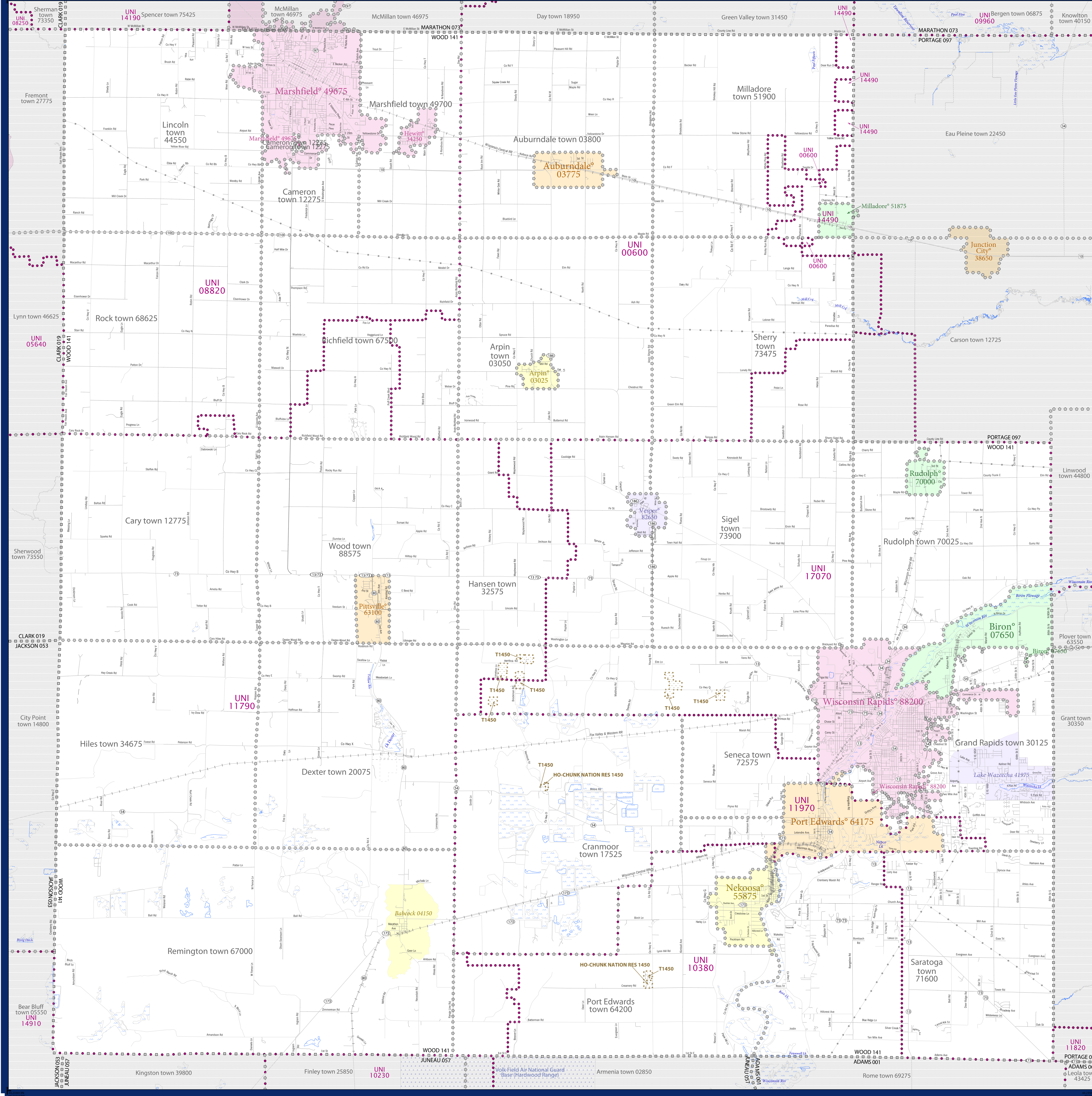


SCHOOL DISTRICT REFERENCE MAP (2010 CENSUS): Wood County, WI



SYMBOL DESCRIPTION	SYMBOL	SYMBOL DESCRIPTION	SYMBOL
Federal American Indian Reservation	[Symbol]	Water Body	[Symbol]
Off-Reservation Trust Land	[Symbol]	Swamp or Marsh	[Symbol]
State American Indian Reservation	[Symbol]	Glacier	[Symbol]
Alaska Native Regional Corporation	[Symbol]	Military	[Symbol]
State (or statistically equivalent entity)	[Symbol]	National or State Park, Forest, or Recreation Area	[Symbol]
County (or statistically equivalent entity)	[Symbol]	Inset Area	[Symbol]
Minor Civil Division (MCD) ^{1,2}	[Symbol]	Outside Subject Area	[Symbol]
Consolidated City	[Symbol]		
Incorporated Place ^{1,3}	[Symbol]		
Census Designated Place (CDP) ³	[Symbol]		
Unified School District	[Symbol]		
Secondary School District	[Symbol]		
Elementary School District	[Symbol]		

Where state, county, and/or MCD boundaries coincide, the map shows the boundary symbol for only the highest-ranking of these boundaries.

1 A "*" following an MCD name denotes a false MCD. A "*" following a place name indicates that a false MCD exists with the same name and FIPS code as the place; the false MCD label is not shown.

2 MCD boundaries are shown in the following states in which MCDs have functioning governments: Connecticut, Maine, Massachusetts, Michigan, Minnesota, New Hampshire, New Jersey, New York, Pennsylvania, Rhode Island, Vermont, and Wisconsin.

3 Place label color correlates to the place fill color.

OFF-RESERVATION TRUST LAND NAMES

T1450	Ho-Chunk Nation
-------	-----------------

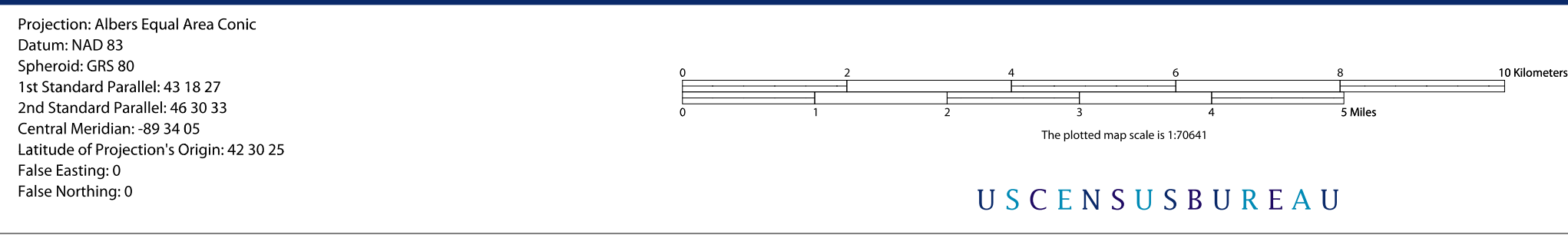
SCHOOL DISTRICTS WITHIN COUNTY

TYPE	CODE	NAME
UNI	00600	Auburndale School District
UNI	08820	Marshfield School District
UNI	10380	Nekoosa School District
UNI	11700	Pittsville School District
UNI	11970	Port Edwards School District
UNI	14490	Stevens Point Area School District
UNI	17070	Wisconsin Rapids School District



All legal boundaries and names are as of January 1, 2010. The boundaries shown on this map are for Census Bureau statistical data collection and tabulation purposes only; their depiction and designation for statistical purposes does not constitute a determination of jurisdictional authority or rights of ownership or entitlement.

Geographic: Vintage: 2010 Census (reference date: January 1, 2010)
 Data Source: U.S. Census Bureau's MAI/TIGER database (TAB100153)
 Map Created by Geography Division: December 13, 2010



PARENT SHEET 1

Total Sheets: 1
 Index Sheets: 0
 Parent Sheets: 1
 Inset Sheets: 0

NAME: Wood County (141)
 ENTITY TYPE: County or statistically equivalent entity
 ST: Wisconsin (55)

2010 SD MAP (PARENT)
 20055141001