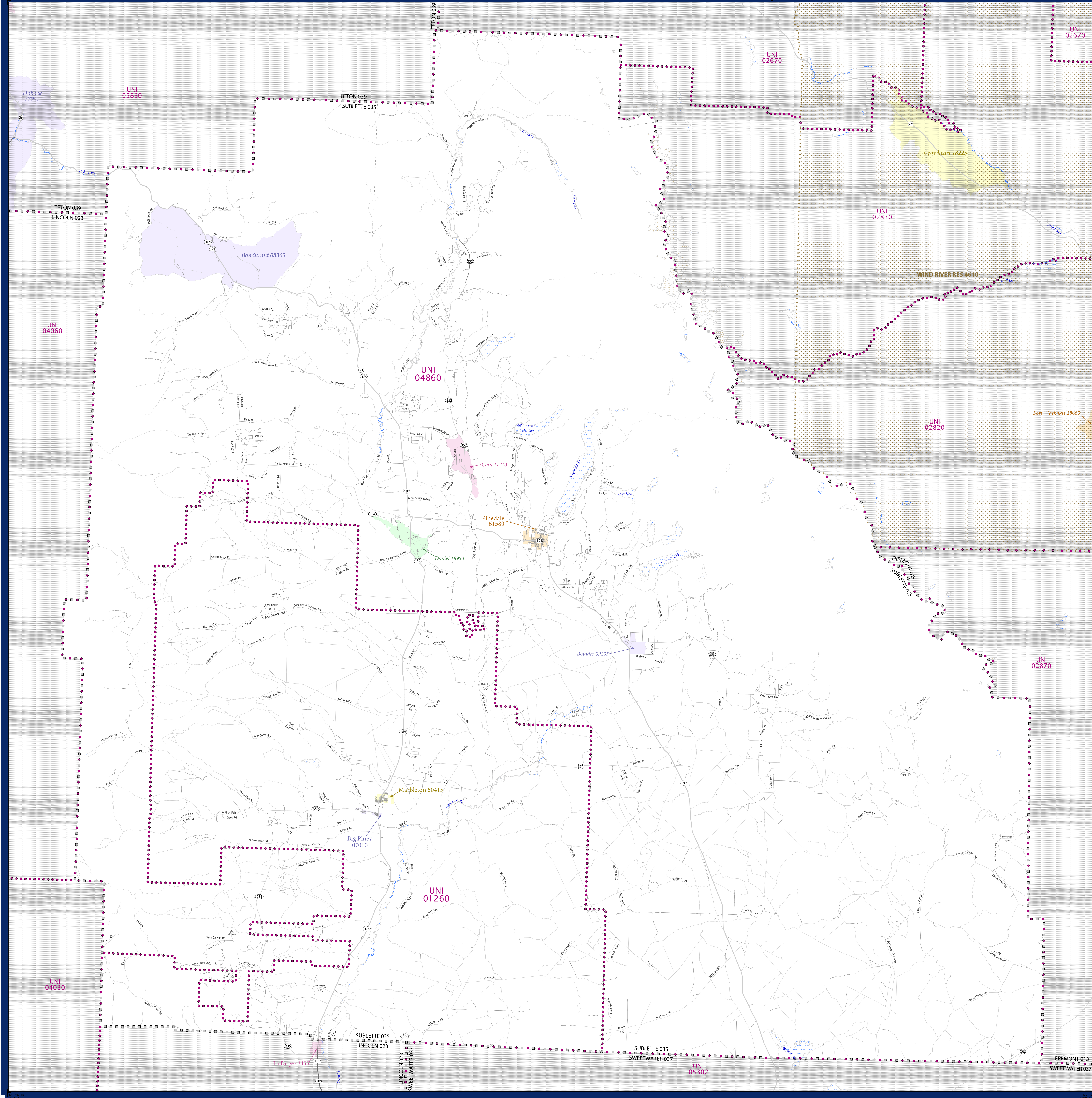


SCHOOL DISTRICT REFERENCE MAP (2010 CENSUS): Sublette County, WY



SYMBOL DESCRIPTION		LEGEND	
Federal American Indian Reservation	[Symbol]	L'ANSE RES 1880	
Off-Reservation Trust Land	[Symbol]	T1880	
State American Indian Reservation	[Symbol]	Tama Res 4125	
Alaska Native Regional Corporation	[Symbol]	NANA ANRC 52120	
State (or statistically equivalent entity)	[Symbol]	NEW YORK 36	
County (or statistically equivalent entity)	[Symbol]	ERIE 029	
Minor Civil Division (MCD) ^{1,2}	[Symbol]	Bristol town 07485	
Consolidated City	[Symbol]	MILFORD 47500	
Incorporated Place ^{1,3}	[Symbol]	Davis 18100	
Census Designated Place (CDP) ³	[Symbol]	Incline Village 35100	
Unified School District	[Symbol]	UNI 03370	
Secondary School District	[Symbol]	SEC 99965	
Elementary School District	[Symbol]	ELM 02220	

DESCRIPTION	SYMBOL	DESCRIPTION	SYMBOL
Interstate	[Symbol]	Water Body	[Symbol]
U.S. Highway	[Symbol]	Swamp or Marsh	[Symbol]
State Highway	[Symbol]	Glacier	[Symbol]
Other Road	[Symbol]	Military	[Symbol]
4WD Trail, Stamen, Alley, Walkway, or Ferry	[Symbol]	National or State Park, Forest, or Recreation Area	[Symbol]
Railroad	[Symbol]	Inset Area	[Symbol]
Pipeline or Power Line	[Symbol]	Outside Subject Area	[Symbol]
Ridge or Fence	[Symbol]		
Property Line	[Symbol]		
Nonvisible Boundary or Feature Not Elsewhere Classified	[Symbol]		

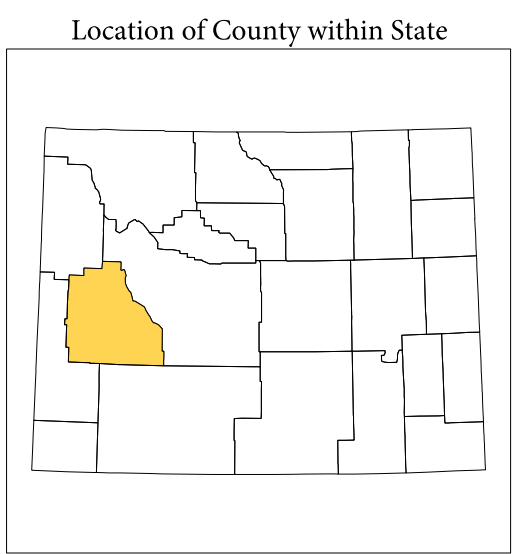
Where state, county, and/or MCD boundaries coincide, the map shows the boundary symbol for only the highest-ranking of these boundaries.

1 A "*" following an MCD name denotes a false MCD. A "*" following a place name indicates that a false MCD exists with the same name and FIPS code as the place; the false MCD label is not shown.

2 MCD boundaries are shown in the following states in which MCDs have functioning governments: Connecticut, Maine, Massachusetts, Michigan, Minnesota, New Hampshire, New Jersey, New York, Pennsylvania, Rhode Island, Vermont, and Wisconsin.

3 Place label color correlates to the place fill color.

SCHOOL DISTRICTS WITHIN COUNTY		
TYPE	CODE	NAME
UNI	01260	Sublette County School District 9
UNI	04860	Sublette County School District 1

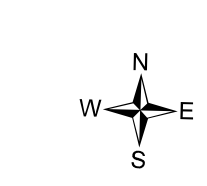
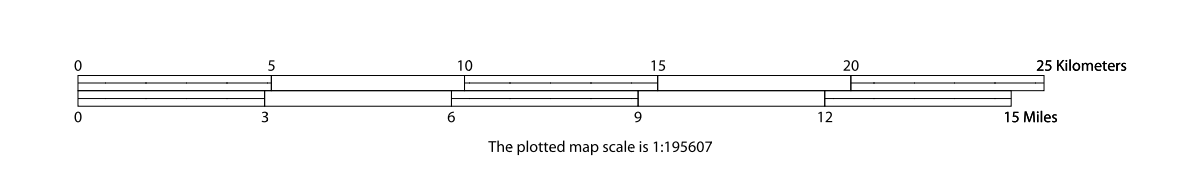


All legal boundaries and names are as of January 1, 2010. The boundaries shown on this map are for Census Bureau's statistical data collection and tabulation purposes only; their depiction and designation for statistical purposes does not constitute a determination of jurisdictional authority or rights of ownership or entitlement.

Geographic: Vintage: 2010 Census (reference date: January 1, 2010)
 Data Source: U.S. Census Bureau's MAINTIGR database (TAB1005156)
 Map Created by Geography Division: December 12, 2010

U.S. DEPARTMENT OF COMMERCE Economics and Statistics Administration U.S. Census Bureau

Projection: Albers Equal Area Conic
 Datum: NAD 83
 Spheroid: GRS 80
 1st Standard Parallel: 41 39 47
 2nd Standard Parallel: 44 20 14
 Central Meridian: -107 33 13
 Latitude of Projection's Origin: 40 59 41
 False Easting: 0
 False Northing: 0



PARENT SHEET 1
 Total Sheets: 1
 Index Sheets: 0
 Parent Sheets: 1
 Inset Sheets: 0

NAME: Sublette County (035)
 ENTITY TYPE: County or statistically equivalent entity
 ST: Wyoming (56)