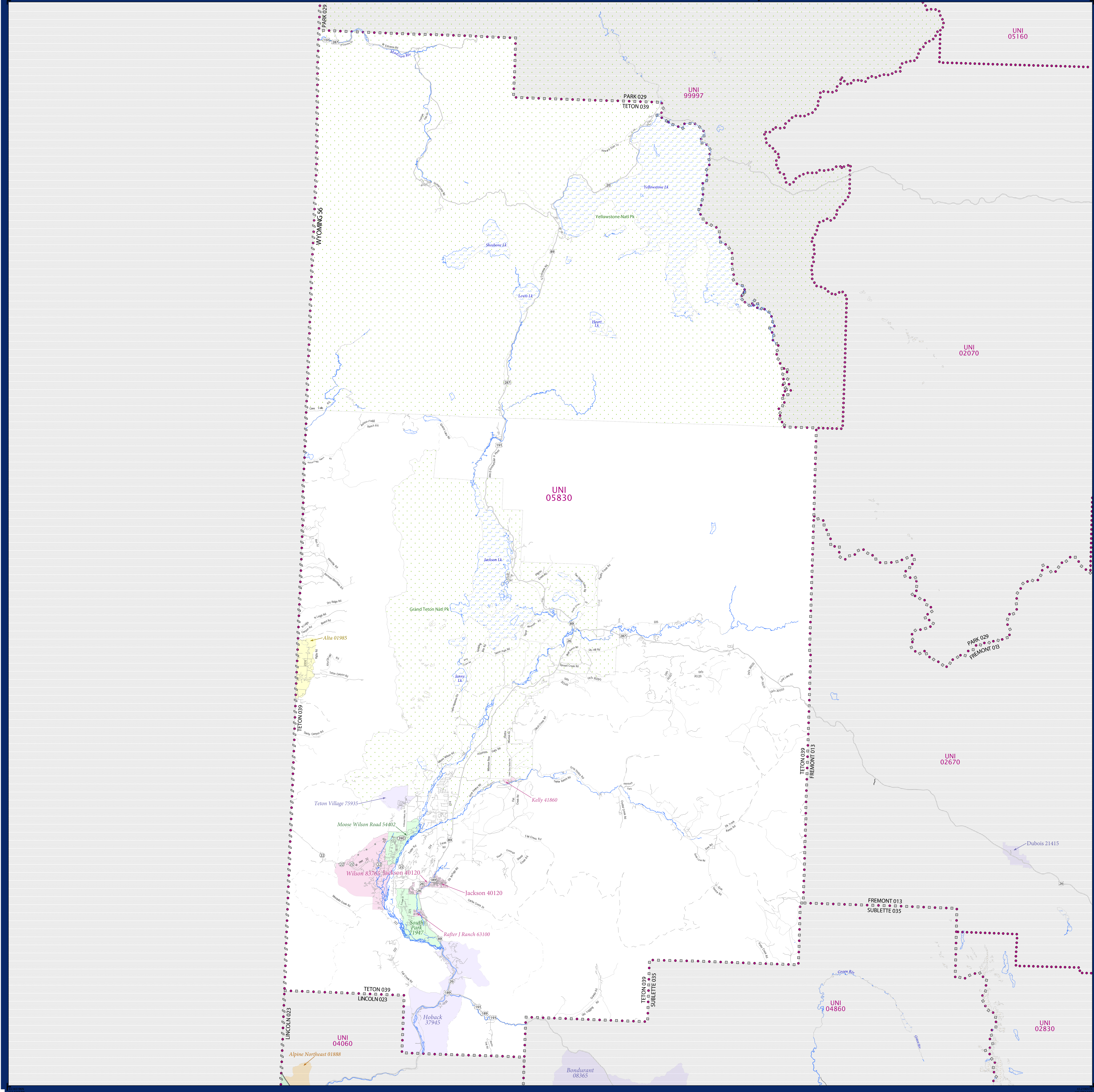


# SCHOOL DISTRICT REFERENCE MAP (2010 CENSUS): Teton County, WY



### LEGEND

SYMBOL DESCRIPTION	SYMBOL	LABEL STYLE
Federal American Indian Reservation	[Dotted pattern]	L'ANSE RES 1880
Off-Reservation Trust Land	[Dotted pattern]	T1880
State American Indian Reservation	[Dotted pattern]	Tama Res 4125
Alaska Native Regional Corporation	[Cross-hatch pattern]	NANA ANRC 52120
State (or statistically equivalent entity)	[Diagonal lines]	NEW YORK 36
County (or statistically equivalent entity)	[Square grid]	ERIE 029
Minor Civil Division (MCD) <sup>1,2</sup>	[Circle grid]	Bristol town 07485
Consolidated City	[Circle grid]	MILFORD 47500
Incorporated Place <sup>1,3</sup>	[Color fill]	Davis 18100
Census Designated Place (CDP) <sup>3</sup>	[Color fill]	Incline Village 35100
Unified School District	[Purple dotted line]	UNI 03370
Secondary School District	[Orange line]	SEC 99965
Elementary School District	[Green line]	ELM 02220

DESCRIPTION	SYMBOL	DESCRIPTION	SYMBOL
Interstate	[Blue line with shield]	Water Body	[Blue area]
U.S. Highway	[Black line with shield]	Swamp or Marsh	[Green area]
State Highway	[Black line with shield]	Glacier	[Blue area]
Other Road	[Black line]	Military	[Blue area]
W/D: Trail, Stamen, Alley, Walkway, or Ferry	[Thin black line]	National or State Park, Forest, or Recreation Area	[Green area]
Railroad	[Black line with cross-ticks]	Inset Area	[Grey area]
Pipeline or Power Line	[Black line with cross-ticks]	Outside Subject Area	[Grey area]
Ridge or Fence	[Dashed black line]		
Property Line	[Dotted black line]		
Nonvisible Boundary or Feature Not Elsewhere Classified	[Dotted black line]		

Where state, county, and/or MCD boundaries coincide, the map shows the boundary symbol for only the highest-ranking of these boundaries.

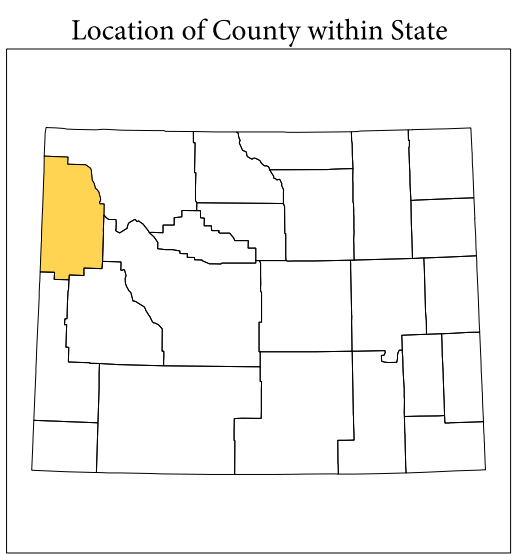
1 A "\*" following an MCD name denotes a false MCD. A "\*" following a place name indicates that a false MCD exists with the same name and FIPS code as the place; the false MCD label is not shown.

2 MCD boundaries are shown in the following states in which MCDs have functioning governments: Connecticut, Maine, Massachusetts, Michigan, Minnesota, New Hampshire, New Jersey, New York, Pennsylvania, Rhode Island, Vermont, and Wisconsin.

3 Place label color correlates to the place fill color.

### SCHOOL DISTRICTS WITHIN COUNTY

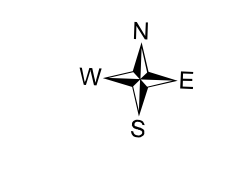
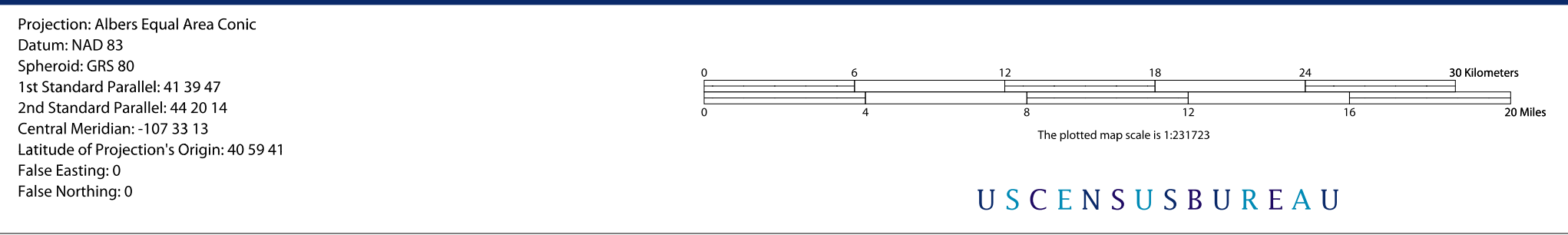
TYPE	CODE	NAME
UNI	039	Teton County School District 1



All legal boundaries and names are as of January 1, 2010. The boundaries shown on this map are for Census Bureau statistical data collection and tabulation purposes only; their depiction and designation for statistical purposes does not constitute a determination of jurisdictional authority or rights of ownership or entitlement.

Geographic: Vintage: 2010 Census (reference date: January 1, 2010)  
 Data Source: U.S. Census Bureau's MAINTIGER database (TAB100256)  
 Map Created by Geography Division: December 10, 2010

U.S. DEPARTMENT OF COMMERCE Economics and Statistics Administration U.S. Census Bureau



USCENSUSBUREAU

PARENT SHEET 1  
 Total Sheets: 1  
 Index Sheets: 0  
 Parent Sheets: 1  
 Inset Sheets: 0

NAME: Teton County (039)  
 ENTITY TYPE: County or statistically equivalent entity  
 ST: Wyoming (56)

2010 SD MAP (PARENT)  
 2010060001